
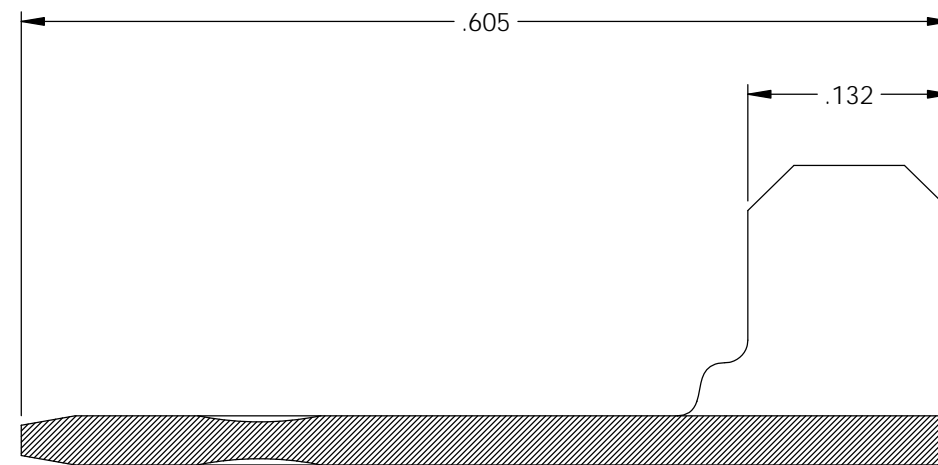
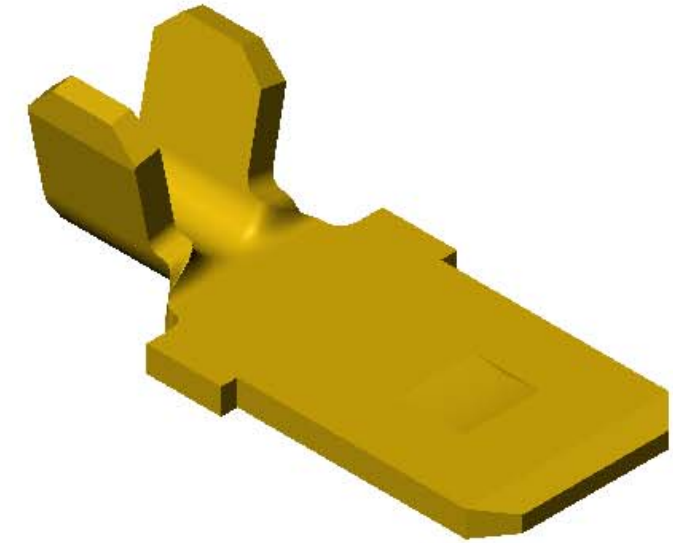
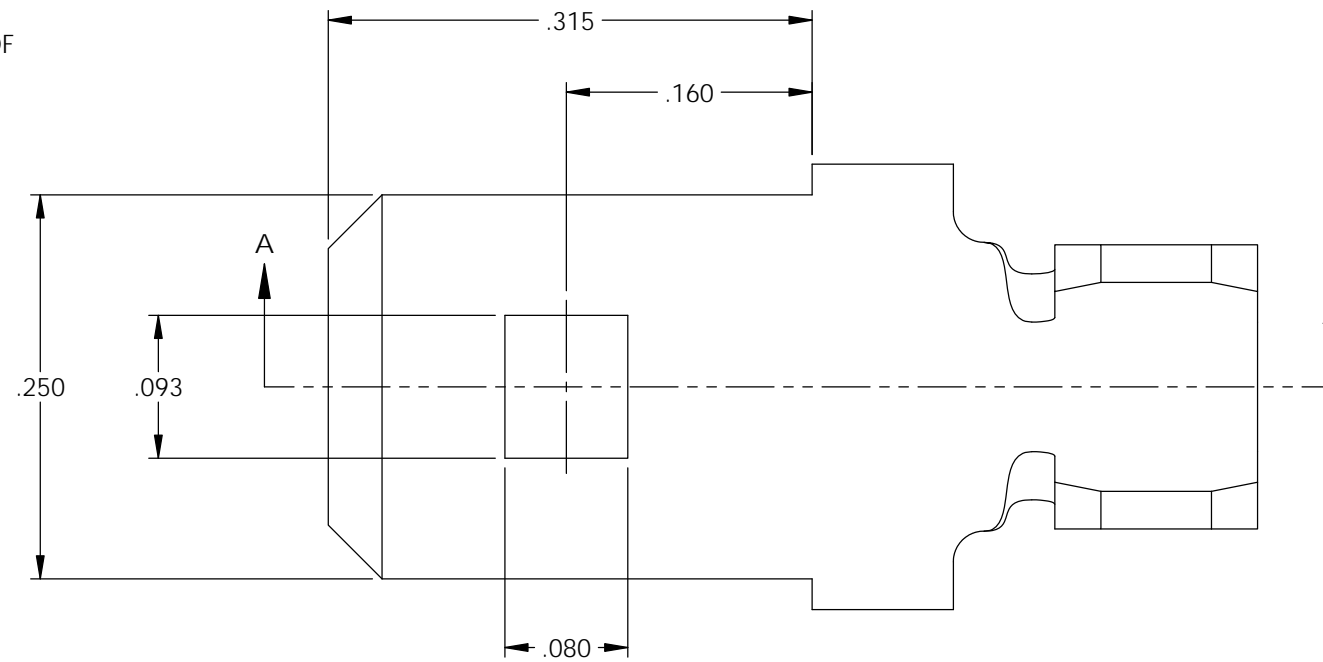


NOTES:

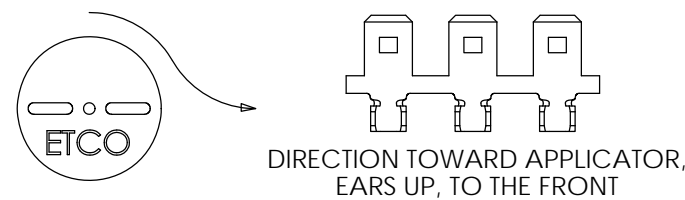
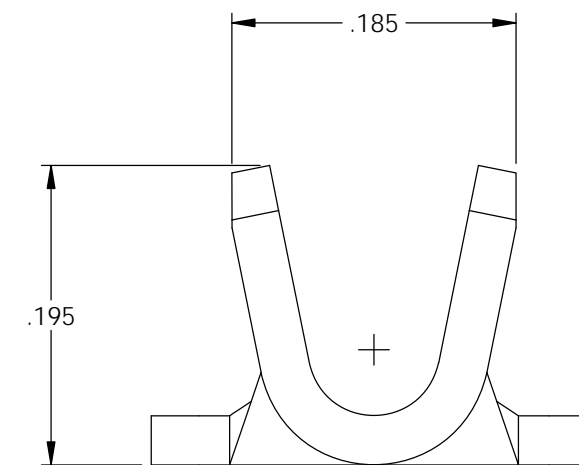
1. MATERIAL: .032 THICK BRASS, #2 TEMPER (1/2 HARD) PER ETCO METAL CODE 2-0929.
2. MATERIAL: .032 THICK PRE-TINNED BRASS, #2 TEMPER (1/2 HARD) PER ETCO METAL CODE 2-XXXX.
3. MATERIAL: .032 THICK PRE-TINNED STEEL, #4 TEMPER (1/4 HARD) PER ETCO METAL CODE 2-3062.
4. PARTS MAY BE COATED WITH A LIGHT FILM OF LUBRICATION USED IN THE MANUFACTURING PROCESS.
5. WIRE RANGE: 14-18 AWG.

Part Number	Mat'l	
3000M 1A-2	Note 2	X
3000M 1AB-2	Note 1	X
3000M 1A-2JA	Note 3	

Rev.	Description of Change/ SCN#	Date
-	Approved For Mfg SCJ	6/25/20
-	Assigned brass mc 2-0929 SCJ	7/10/20
-	Added UL; ECR# 6065 SCJ	8-03/20





SECTION A-A



THIS PRINT IS THE PROPERTY OF ETCO INCORPORATED. NO PART OF THIS DESIGN MAY BE USED IN ANY WAY WITHOUT WRITTEN CONSENT FROM ETCO INCORPORATED.

UNCONTROLLED COPY

 THIRD ANGLE PROJECTION TOLERANCES UNLESS OTHERWISE SPECIFIED INCHES: .XX - ±.030 .XXX - ±.015 ANGLES: ±5°	TOOL NO. 1042	Title: .032 x .250 Male Disconnect		
		DO NOT SCALE DWG.	Drawn By: S.Johnson	Date: 03/16/20
ETCO Incorporated Engineered Products 25 Bellows Street Warwick, RI 02888 Phone: (401) 467-2400 Fax: (401) 467-9230 www.ETCO.com		Design Control By: ETCO	Scale: 8X	Size B
		Dwg. No.: 3000M 1A-2 cust		