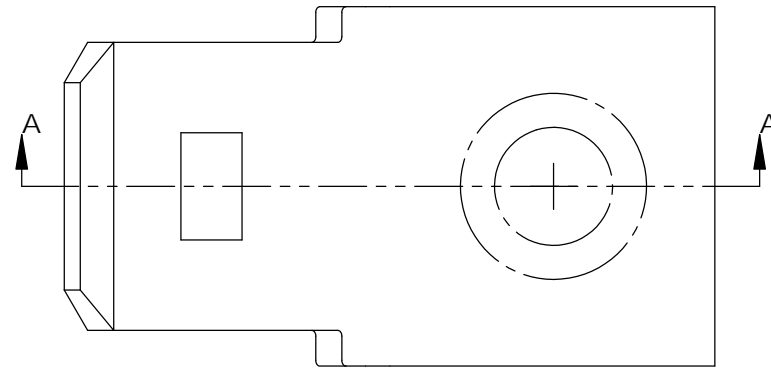



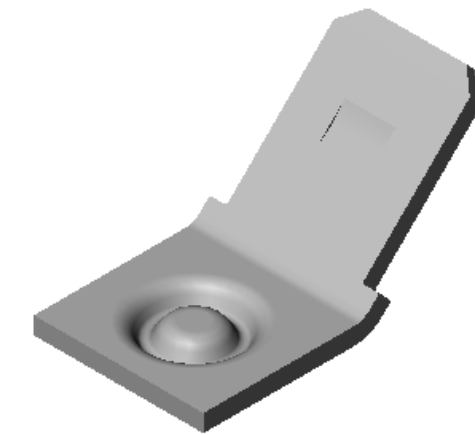
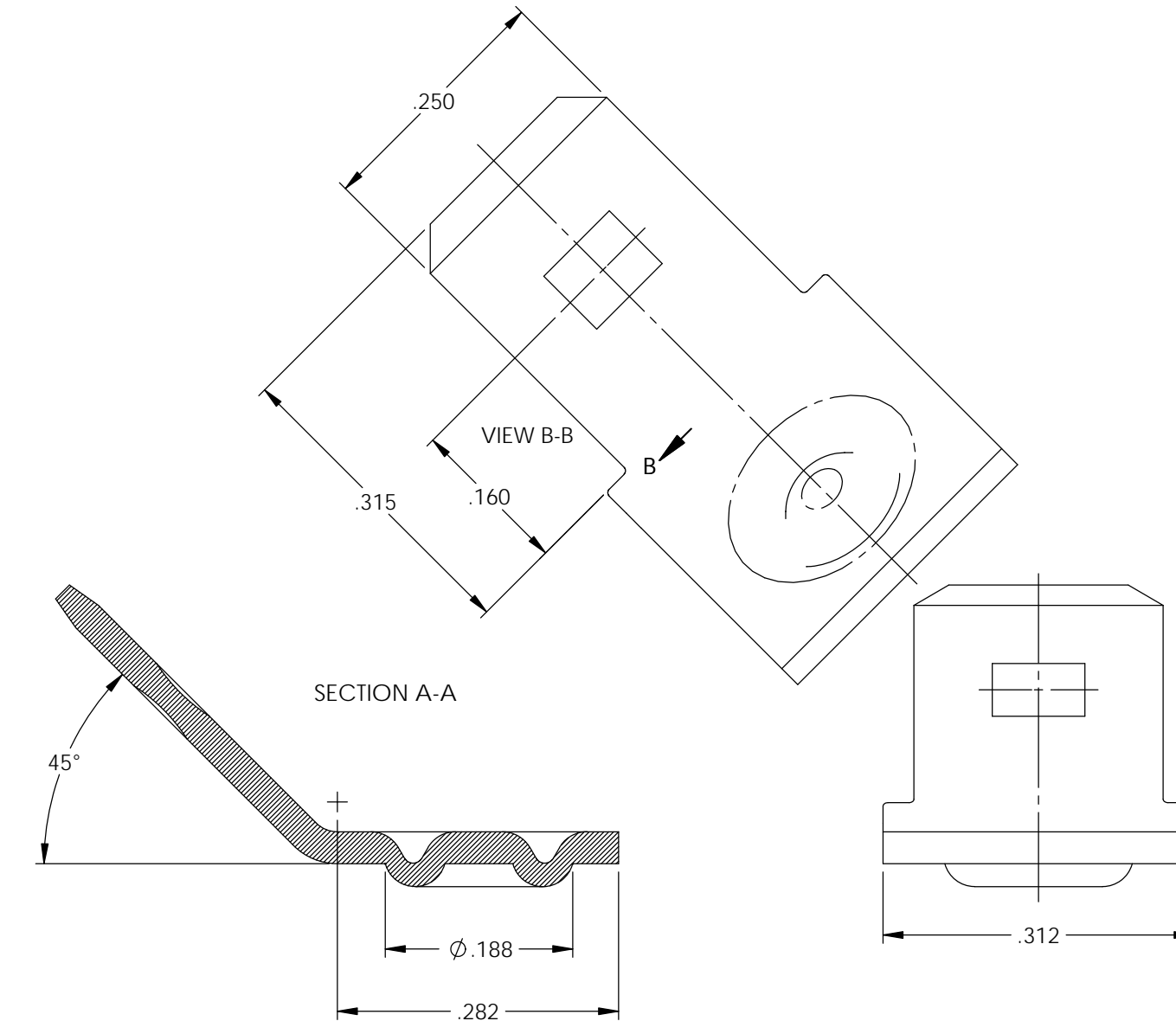
NOTES:

1. MATERIAL: .032 THICK CRS  
#3 TEMPER (1/4 HARD)  
PER ETCO METAL CODE XXXXX.
2. MATERIAL: .032 THICK NICKEL PLATED STEEL  
#3 TEMPER (1/4 HARD)  
PER ETCO METAL CODE XXXXX.
3. MATERIAL: .032 THICK SILVER OVER COPPER  
PLATED STEEL  
#3 TEMPER (1/4 HARD)  
PER ETCO METAL CODE XXXXX.
4. PARTS MAY BE COATED WITH A LIGHT FILM OF  
LUBRICATION USED IN THE MANUFACTURING PROCESS.
5. PARTS ARE PRODUCED IN LOOSE PIECE FORM.





Part Number	Mat'l	
3000M 292A	Note 1	X
3000M 292A1	Note 2	
3000M 292AG	Note 3	

Rev.	Description of Change/ SCN#	Date
-	Approved For Quote SCJ	5/19/20



# UNCONTROLLED COPY

 THIRD ANGLE PROJECTION TOLERANCES UNLESS OTHERWISE SPECIFIED INCHES: .XX - ±.030 .XXX - ±.015 ANGLES: ±5°	TOOL NO. <b>1050</b>	Title: <b>Stationary Weld Male</b>		
		DO NOT SCALE DWG.	Drawn By: S.Johnson	Date: 5/19/20
ETCO Incorporated Engineered Products 25 Bellows Street Warwick, RI 02888 Phone: (401) 467-2400 Fax: (401) 467-9230 www.ETCO.com		Design Control By: ETCO	Scale: 6X	Size B
Dwg. No.: <b>3000M 292A 292A1 292AG cust</b>				