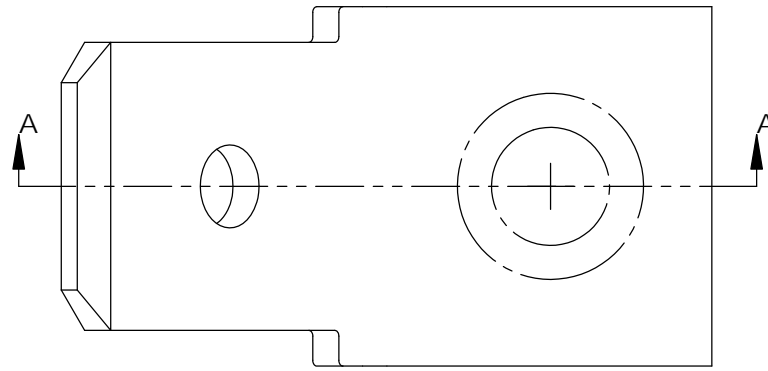


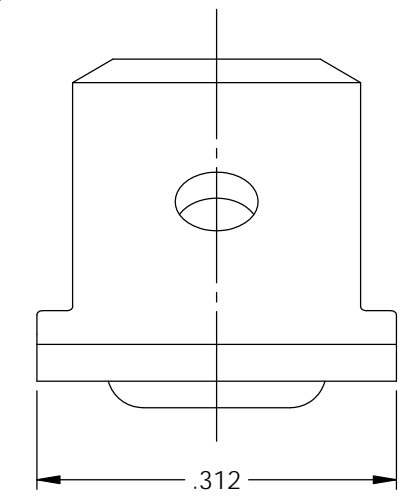
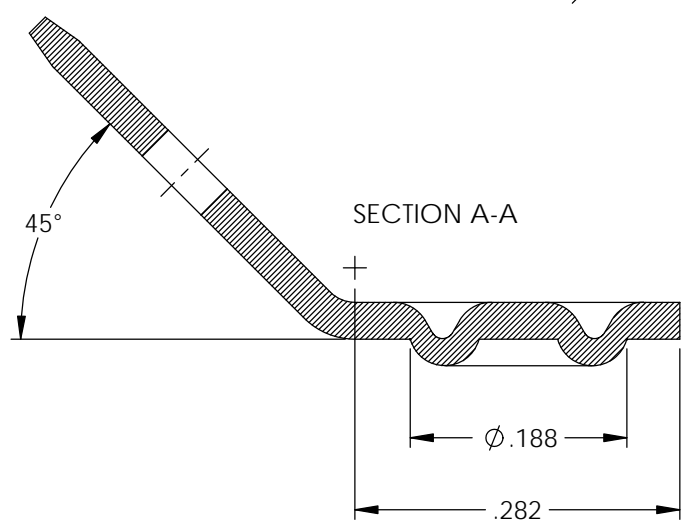
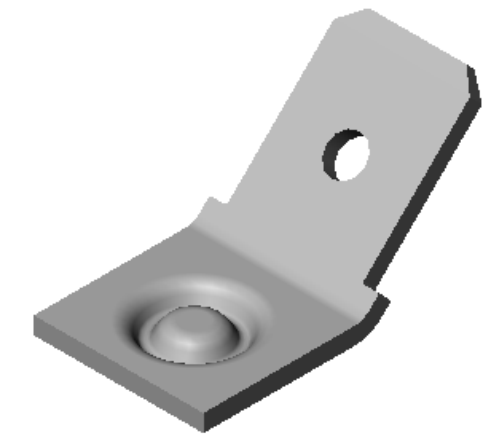
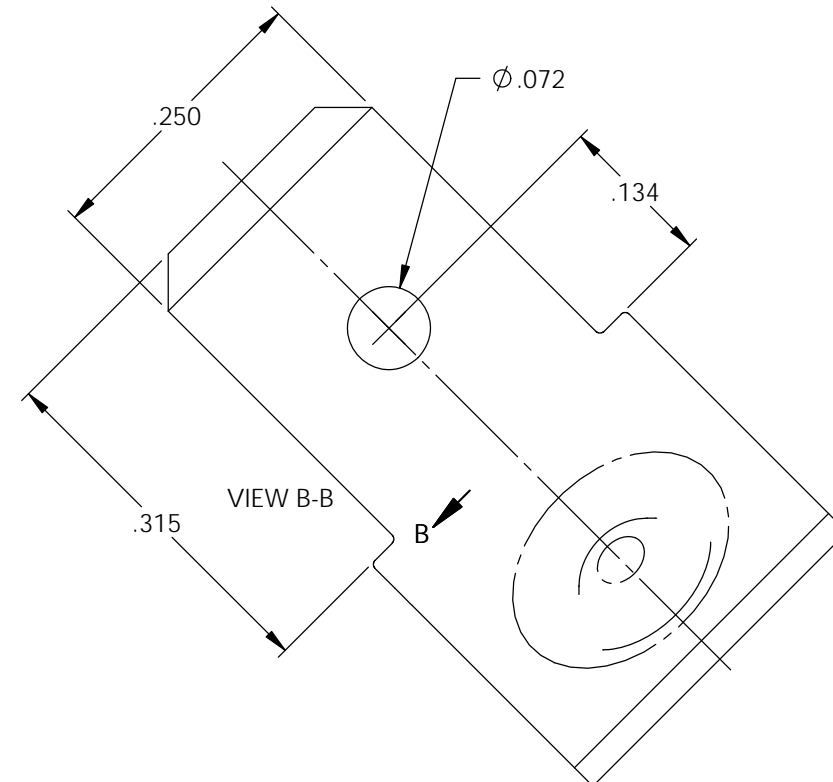
NOTES:

1. MATERIAL: .032 THICK NICKEL PLATED STEEL
#3 TEMPER (1/4 HARD)
PER ETCO METAL CODE XXXXX.
2. PARTS MAY BE COATED WITH A LIGHT FILM OF LUBRICATION USED IN THE MANUFACTURING PROCESS.
3. PARTS ARE PRODUCED IN LOOSE PIECE FORM.



| Part Number | Mat'l |
|-------------|--------|
| 3000M 292C4 | Note 1 |

| Rev. | Description of Change/ SCN# | Date |
|------|-----------------------------|---------|
| - | Approved For Quote SCJ | 5/15/20 |



UNCONTROLLED COPY

| | | | | |
|---|---------------------------------|---|-----------------------------------|-----------------------------|
| <p>THIRD ANGLE PROJECTION TOLERANCES UNLESS OTHERWISE SPECIFIED INCHES: .XX - ±.030 .XXX - ±.015 ANGLES: ±5°</p> | <p>TOOL NO. 1050</p> | <p>Title: Stationary Weld Male</p> | | |
| | | <p>DO NOT SCALE DWG.</p> | <p>Drawn By: S.Johnson</p> | <p>Date: 5/15/20</p> |
| <p>ETCO Incorporated Engineered Products 25 Bellows Street Warwick, RI 02888 Phone: (401) 467-2400 Fax: (401) 467-9230 www.ETCO.com</p> | | <p>Design Control By: ETCO</p> | <p>Scale: 6X</p> | <p>Size B</p> |
| | | <p>Dwg. No.: 3000M 292C4 cust</p> | | |