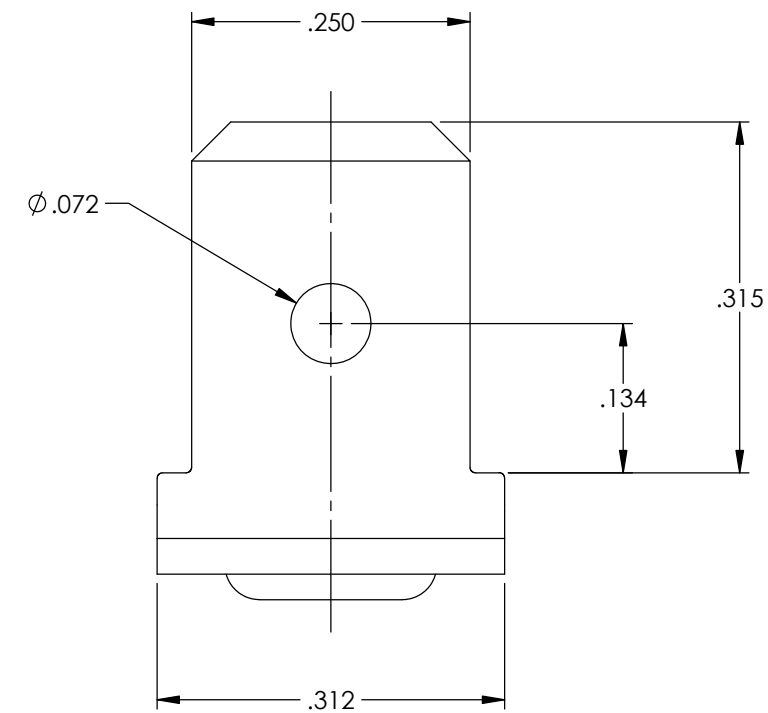
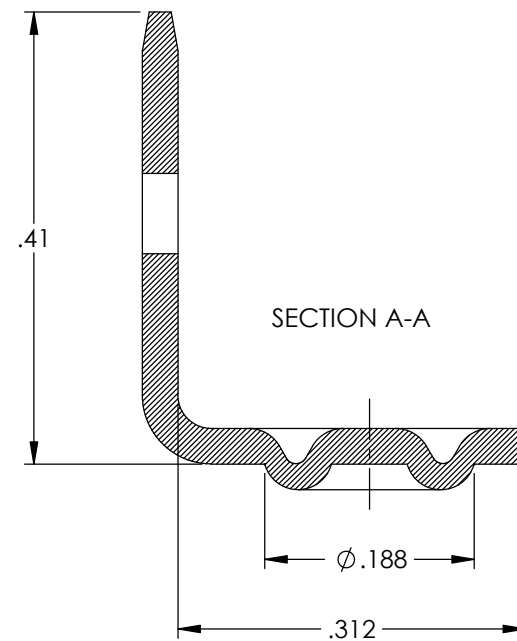
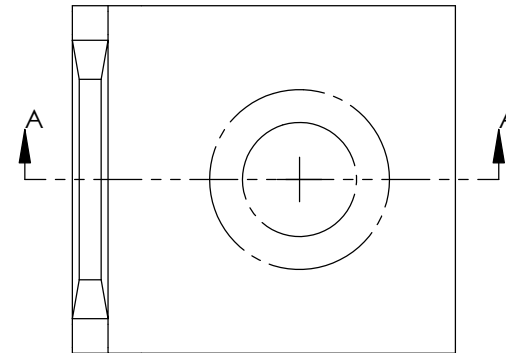


NOTES:



1. MATERIAL: .0315 THICK, 1008 COLD ROLLED STEEL  
#2 TEMPER (1/2 HARD)  
PER ETCO METAL CODE 2-2998.
2. POST ELECTROLESS NICKEL PLATE: .00020 THK.
3. PARTS ARE PRODUCED IN LOOSE PIECE FORM.

Rev.	Description of Change/ SCN#	Date
A	Preliminary SCJ	2/20/23
B	Approved For Tooling SCJ	2/21/23

Part Number	Mat'l
3000M 292C5	Note 1



## UNCONTROLLED COPY

 THIRD ANGLE PROJECTION TOLERANCES UNLESS OTHERWISE SPECIFIED INCHES: .XX - ±.030 .XXX - ±.015 ANGLES: ±5°	TOOL NO. <b>1050</b>	Title: <b>Stationary Weld Male</b>		
	 <b>ETCO</b>	DO NOT SCALE DWG.	Drawn By: <b>S.Johnson</b>	Date: <b>2/20/23</b>
ETCO Incorporated Engineered Products 25 Bellows Street Warwick, RI 02888 Phone: (401) 467-2400 Fax: (401) 467-9230 www.ETCO.com		Design Control By: <b>ETCO</b>	Scale: <b>6X</b>	Size <b>B</b>
		Dwg. No.: <b>3000M 292C5 cust</b>		