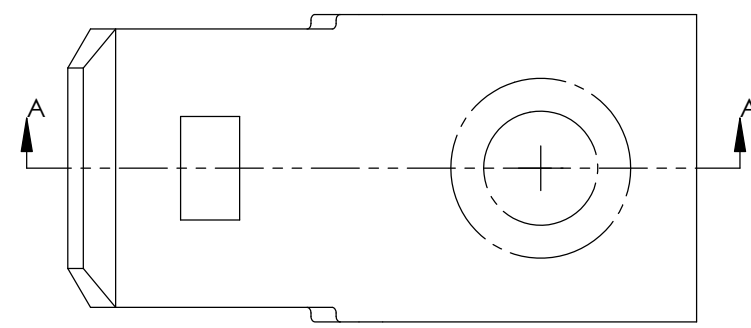
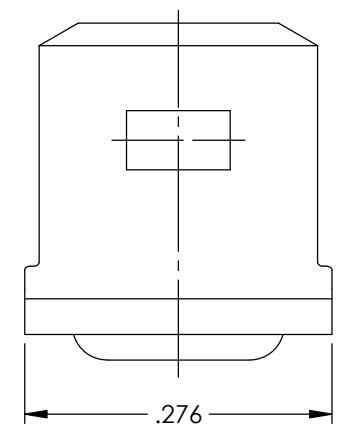
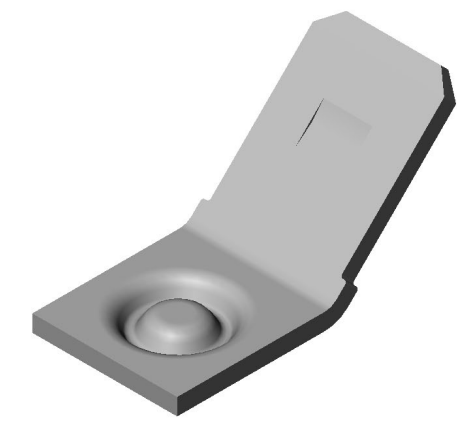
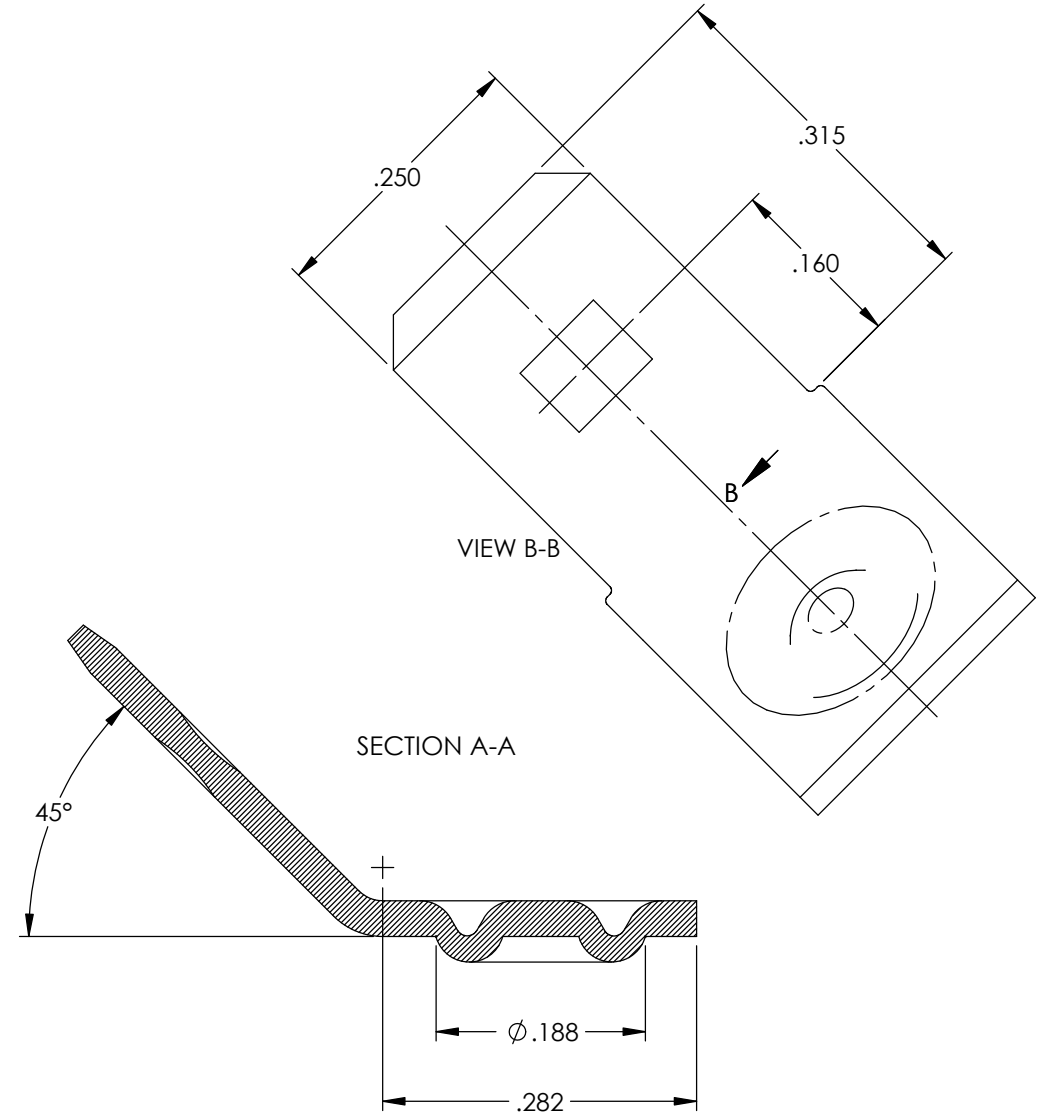


- NOTES:  
 1. MATERIAL: .0315 THICK, 1008 COLD ROLLED STEEL (A)  
     #2 TEMPER (1/2 HARD)  
     PER ETCO METAL CODE 2-2998.  
 2. POST ELECTROLESS NICKEL PLATE. (A)  
 3. PARTS ARE PRODUCED IN LOOSE PIECE FORM.





Part Number	Mat'l	Plating
3000M 292D	Note 1	Note 2

Rev.	Description of Change/ SCN#	Date
A	Approved For Quote, Mat'l .0315 thk No.2 was .032 thk No.3, Post-plate was pre-plate SCJ	4/04/23



## UNCONTROLLED COPY

 THIRD ANGLE PROJECTION TOLERANCES UNLESS OTHERWISE SPECIFIED INCHES: .XX - ±.030 .XXX - ±.015 ANGLES: ±5°	TOOL NO. <b>1050</b>	Title: <b>Stationary Weld Male</b>		
	 <b>ETCO</b>	DO NOT SCALE DWG.	Drawn By: <b>S.Johnson</b>	Date: <b>5/19/20</b>
ETCO Incorporated Engineered Products 25 Bellows Street Warwick, RI 02888 Phone: (401) 467-2400 Fax: (401) 467-9230 www.ETCO.com		Design Control By: <b>ETCO</b>	Scale: <b>6X</b>	Size <b>B</b>
		Dwg. No.: <b>3000M 292D cust</b>		