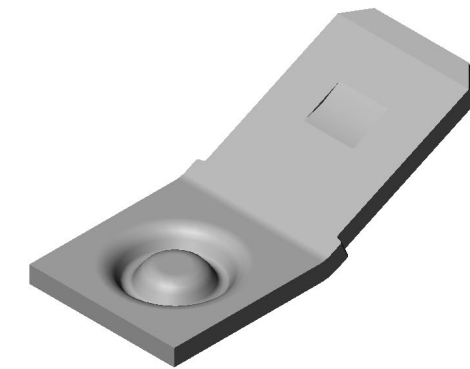
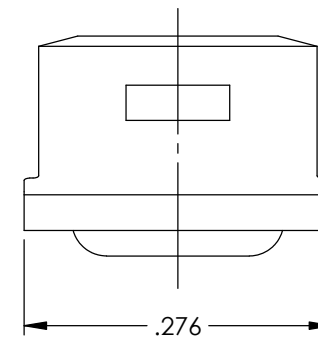
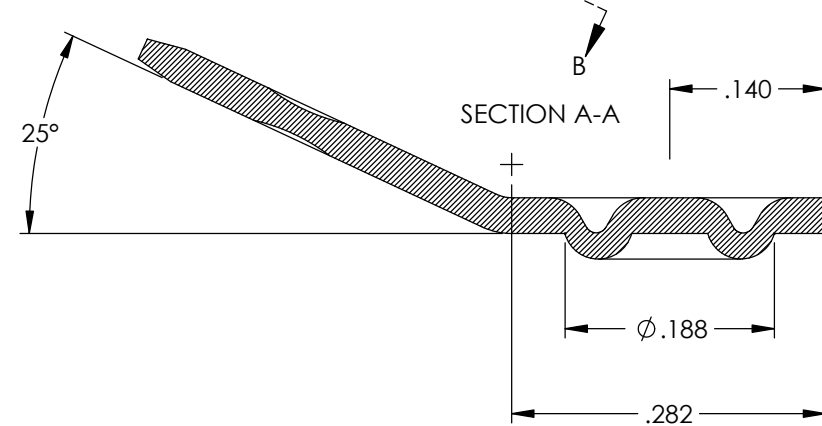
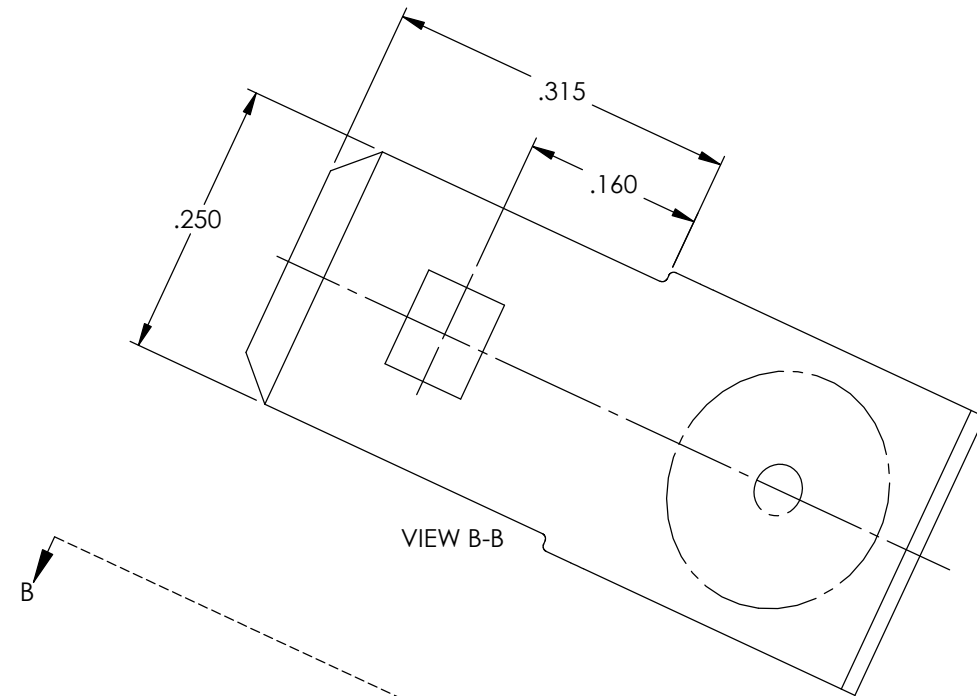
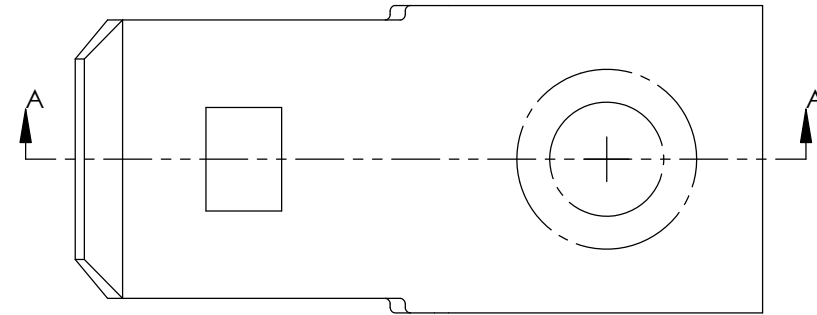


NOTES:

- 1. MATERIAL: .0315 THICK, 1008 COLD ROLLED STEEL (A)  
#2 TEMPER (1/2 HARD)  
PER ETCO METAL CODE 2-2998.
- 2. POST ELECTROLESS NICKEL PLATE. (A)
- 3. PARTS ARE PRODUCED IN LOOSE PIECE FORM.



Part Number	Mat'l	Plating
3000M 292D1	Note 1	Note 2

Rev.	Description of Change/ SCN#	Date
A	Approved For Quote, Mat'l .0315 thk No.2 was .032 thk No.3, Post-plate was pre-plate SCJ	4/03/23

# UNCONTROLLED COPY

<p>THIRD ANGLE PROJECTION TOLERANCES UNLESS OTHERWISE SPECIFIED INCHES: .XX - ±.030 .XXX - ±.015 ANGLES: ±5°</p>	<p>TOOL NO. <b>1050</b></p>	<p>Title: Stationary Weld Male</p>		
		<p>DO NOT SCALE DWG.</p>	<p>Drawn By: S.Johnson</p>	<p>Date: 5/15/20</p>
<p>ETCO Incorporated Engineered Products 25 Bellows Street Warwick, RI 02888 Phone: (401) 467-2400 Fax: (401) 467-9230 www.ETCO.com</p>		<p>Design Control By: ETCO</p>	<p>Scale: 6X</p>	<p>Size B</p>
<p>Dwg. No.: <b>3000M 292D1 cust</b></p>				