
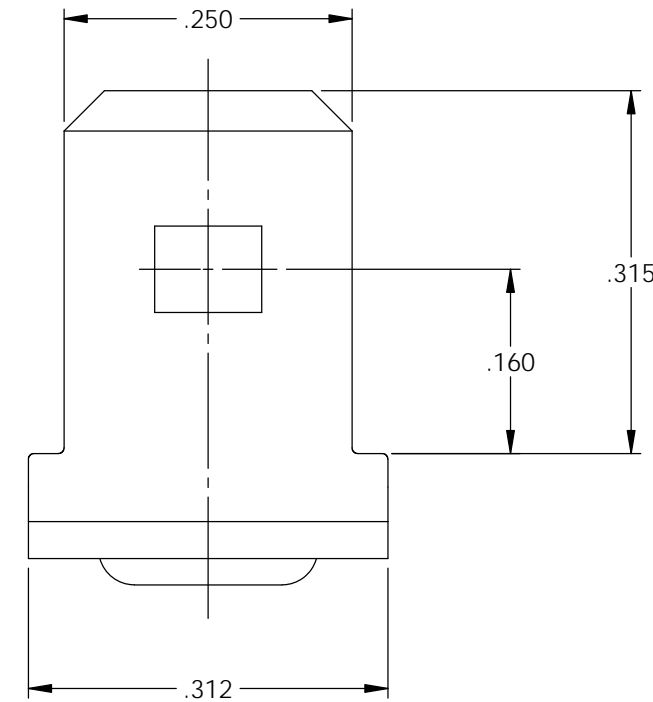
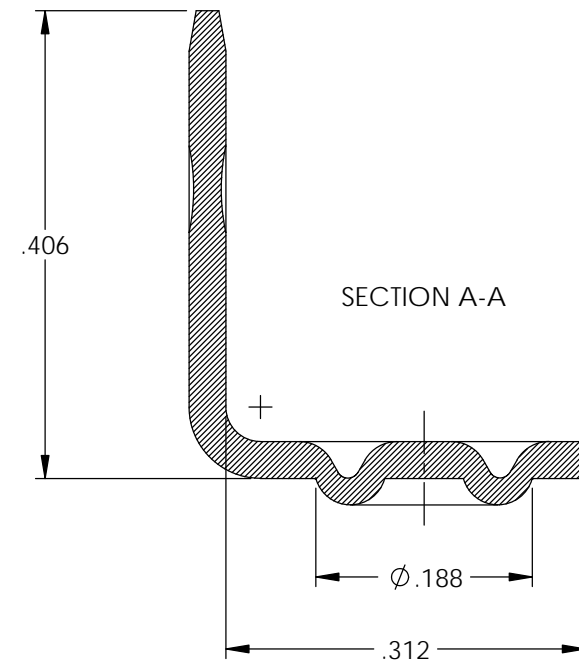
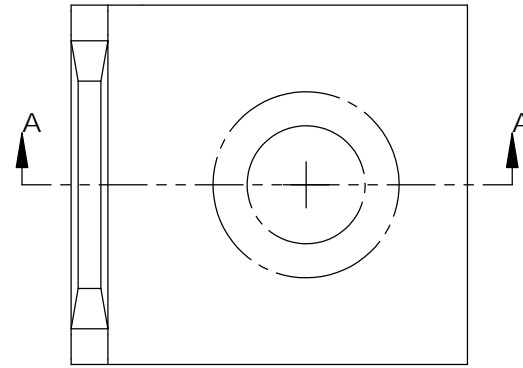


NOTES:



1. MATERIAL: .032 THICK CRS  
#3 TEMPER (1/4 HARD)  
PER ETCO METAL CODE XXXXX.
2. MATERIAL: .032 THICK NICKEL PLATED STEEL  
#3 TEMPER (1/4 HARD)  
PER ETCO METAL CODE XXXXX.
3. PARTS MAY BE COATED WITH A LIGHT FILM OF LUBRICATION USED IN THE MANUFACTURING PROCESS.
4. PARTS ARE PRODUCED IN LOOSE PIECE FORM.

Rev.	Description of Change/ SCN#	Date
-	Approved For Quote SCJ	5/15/20

Part Number	Mat'l	
3000M 292	Note 2	X
3000M 292A2	Note 1	



## UNCONTROLLED COPY

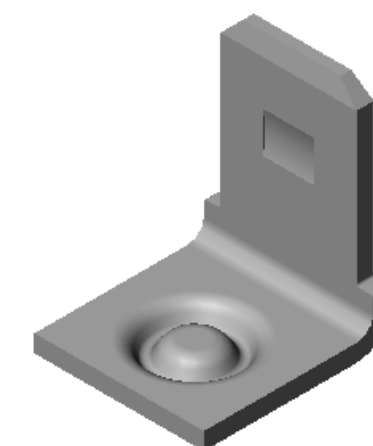
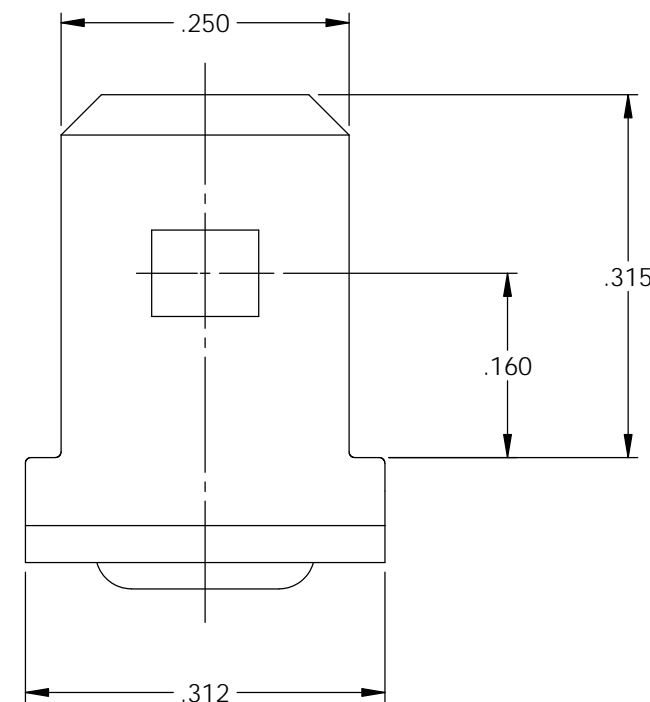
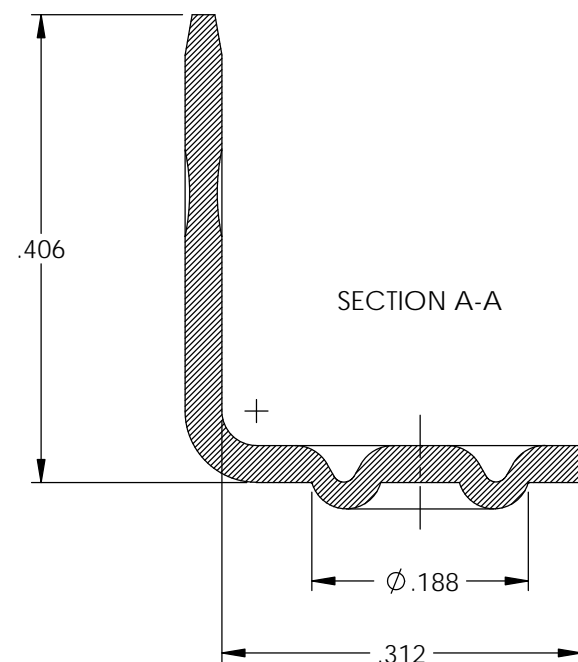
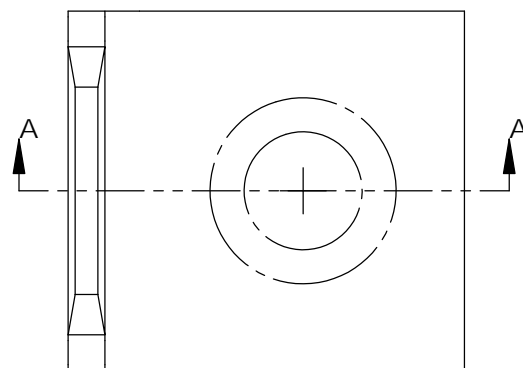
 THIRD ANGLE PROJECTION TOLERANCES UNLESS OTHERWISE SPECIFIED INCHES: .XX - ±.030 .XXX - ±.015 ANGLES: ±5°	TOOL NO. <b>1050</b>	Title: <b>Stationary Weld Male</b>		
	 <b>ETCO</b>	ETCO Incorporated Engineered Products 25 Bellows Street Warwick, RI 02888 Phone: (401) 467-2400 Fax: (401) 467-9230 www.ETCO.com	DO NOT SCALE DWG. Design Control By: S. Johnson ETCO	Date: 5/15/20 Scale: 6X Size B

NOTES:

1. MATERIAL: .032 THICK CRS  
#3 TEMPER (1/4 HARD)  
PER ETCO METAL CODE XXXXX.
2. MATERIAL: .032 THICK NICKEL PLATED STEEL  
#3 TEMPER (1/4 HARD)  
PER ETCO METAL CODE XXXXX.
3. PARTS MAY BE COATED WITH A LIGHT FILM OF LUBRICATION USED IN THE MANUFACTURING PROCESS.
4. PARTS ARE PRODUCED IN LOOSE PIECE FORM.

Rev.	Description of Change/ SCN#	Date
-	Approved For Quote SCJ	5/15/20

Part Number	Mat'l
3000M 292	Note 2
3000M 292A2	Note 1



# UNCONTROLLED COPY

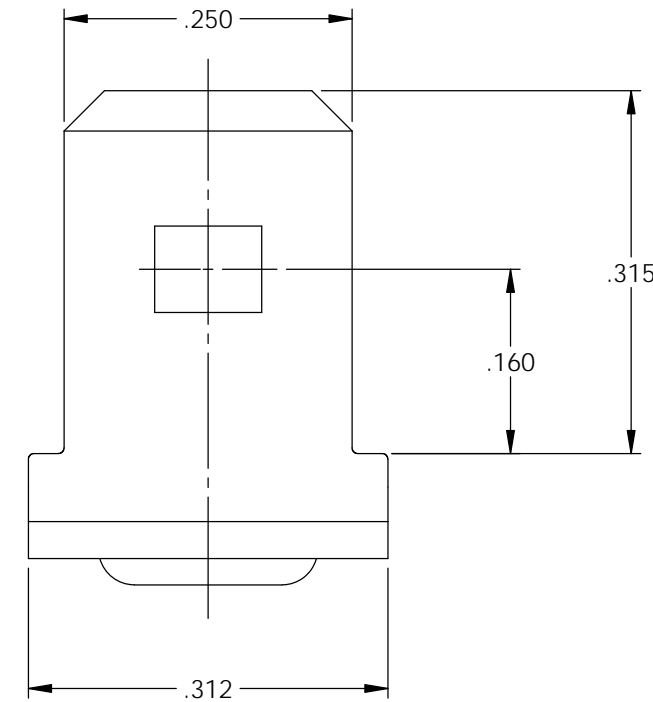
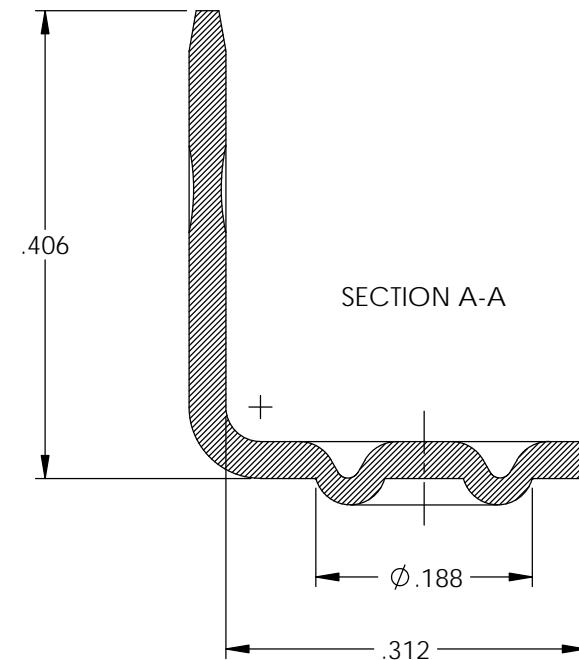
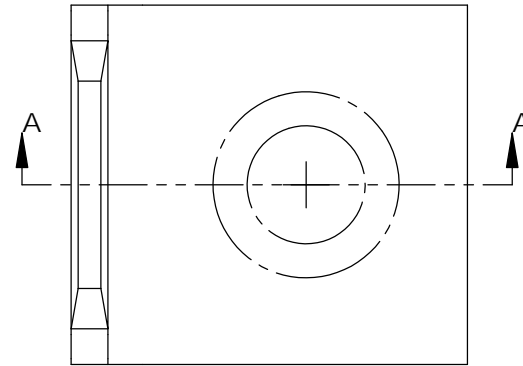
<p>THIRD ANGLE PROJECTION TOLERANCES UNLESS OTHERWISE SPECIFIED INCHES: .XX - ±.030 .XXX - ±.015 ANGLES: ±5°</p>	<p>TOOL NO.</p> <p><b>1050</b></p>	<p>Title:</p> <p><b>Stationary Weld Male</b></p>	
	<p><b>ETCO</b></p>	<p>DO NOT SCALE DWG.</p> <p>ETCO Incorporated Engineered Products 25 Bellows Street Warwick, RI 02888 Phone: (401) 467-2400 Fax: (401) 467-9230 www.ETCO.com</p>	<p>Drawn By: S.Johnson</p> <p>Design Control By: ETCO</p> <p>Dwg. No.: <b>3000M 292, 292A2 cust</b></p>

NOTES:

1. MATERIAL: .032 THICK CRS  
#3 TEMPER (1/4 HARD)  
PER ETCO METAL CODE XXXXX.
2. MATERIAL: .032 THICK NICKEL PLATED STEEL  
#3 TEMPER (1/4 HARD)  
PER ETCO METAL CODE XXXXX.
3. PARTS MAY BE COATED WITH A LIGHT FILM OF LUBRICATION USED IN THE MANUFACTURING PROCESS.
4. PARTS ARE PRODUCED IN LOOSE PIECE FORM.

Rev.	Description of Change/ SCN#	Date
-	Approved For Quote SCJ	5/15/20

Part Number	Mat'l
3000M 292	Note 2
3000M 292A2	Note 1



# UNCONTROLLED COPY

<p>THIRD ANGLE PROJECTION TOLERANCES UNLESS OTHERWISE SPECIFIED INCHES: .XX - ±.030 .XXX - ±.015 ANGLES: ±5°</p>	<p>TOOL NO. <b>1050</b></p>	<p>Title: <b>Stationary Weld Male</b></p>		
		<p>DO NOT SCALE DWG.</p>	<p>Drawn By: <b>S.Johnson</b></p>	<p>Date: <b>5/15/20</b></p>
<p>ETCO Incorporated Engineered Products 25 Bellows Street Warwick, RI 02888 Phone: (401) 467-2400 Fax: (401) 467-9230 www.ETCO.com</p>		<p>Design Control By: <b>ETCO</b></p>	<p>Scale: <b>6X</b></p>	<p>Size <b>B</b></p>
		<p>Dwg. No.: <b>3000M 292, 292A2 cust</b></p>		