
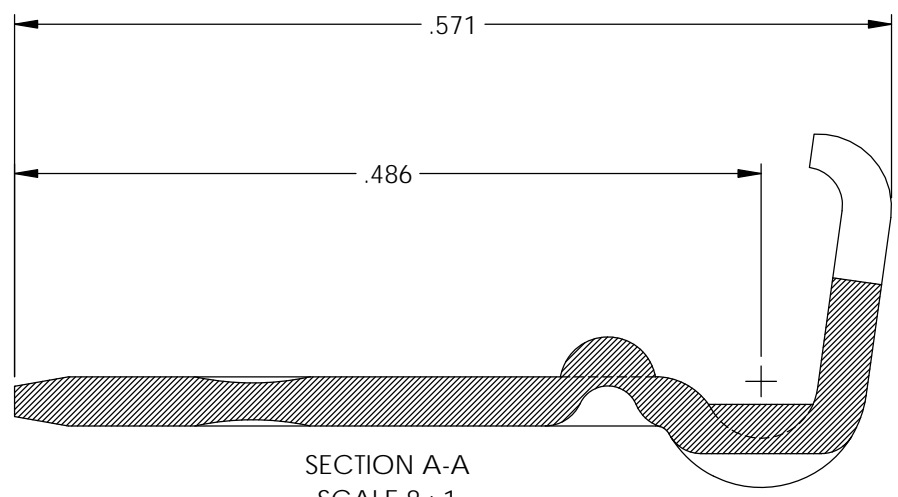
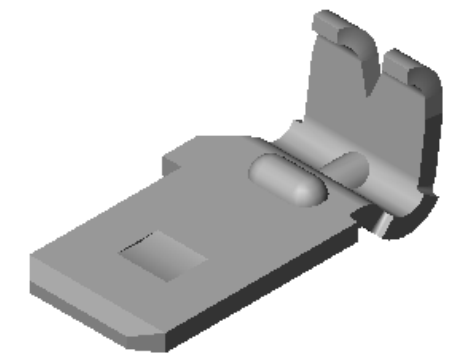
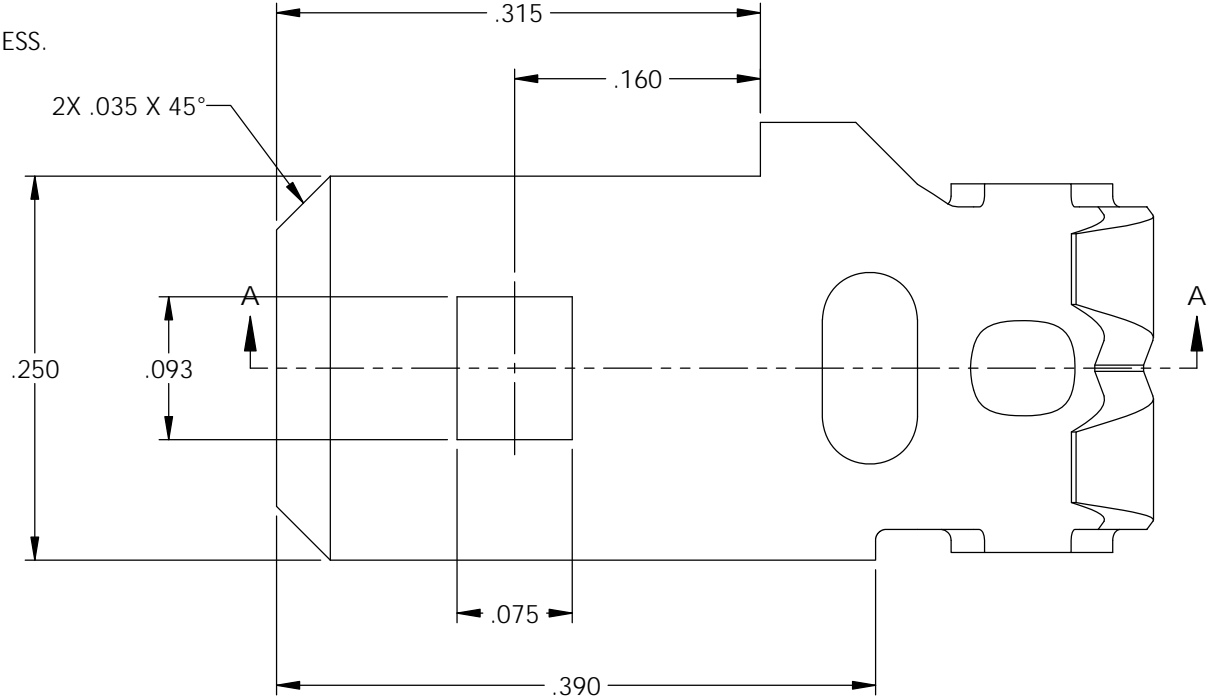


NOTES:

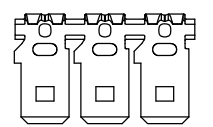
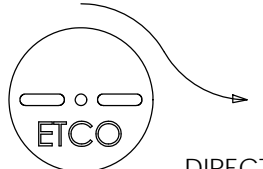
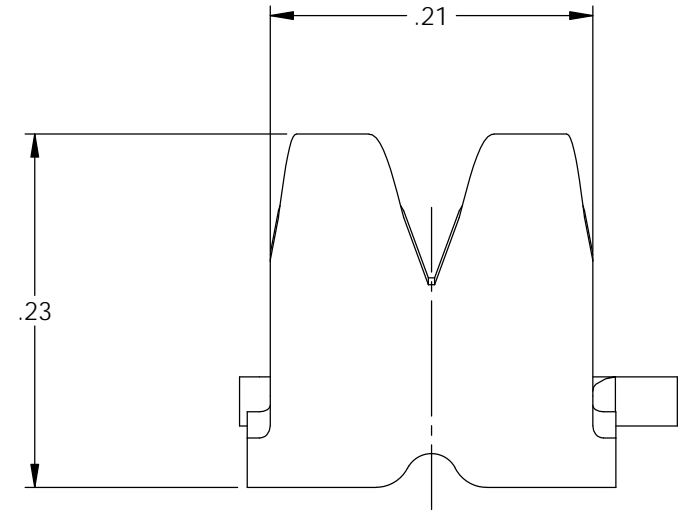
- MATERIAL: .032 THICK BRASS
#2 TEMPER (1/2 HARD)
PER ETCO METAL CODE XXXXX.
- MATERIAL: .032 THICK PRETINNED BRASS
#2 TEMPER (1/2 HARD)
PER ETCO METAL CODE XXXXX.
- PARTS MAY BE COATED WITH A LIGHT FILM OF LUBRICATION USED IN THE MANUFACTURING PROCESS.
- WIRE RANGE: 14-18 AWG.

| Part Number | Mat'l |  |
|-------------|--------|--|
| 3000M 3A | Note 2 | X |
| 3000M 3AB | Note 1 | X |

| Rev. | Description of Change/ SCN# | Date |
|------|-----------------------------|---------|
| A | Approved For Quote SCJ | 7/21/20 |




SECTION A-A
SCALE 8 : 1



DIRECTION TOWARD APPLICATOR,
EARS UP, TO THE BACK

UNCONTROLLED COPY

THIRD ANGLE PROJECTION
TOLERANCES UNLESS OTHERWISE SPECIFIED
INCHES: .XX - ±.030
.XXX - ±.015
ANGLES: ±5°



TOOL NO.
1027

Title: **.032 x .250 Flag Male**

DO NOT SCALE DWG.

Drawn By: **S.Johnson** Date: **7/21/20**

Design Control By: **ETCO** Scale: **8X** Size: **B**

Dwg. No.: **3000M 3A cust**

ETCO Incorporated
Engineered Products
25 Bellows Street
Warwick, RI 02888
Phone: (401) 467-2400
Fax: (401) 467-9230
www.ETCO.com