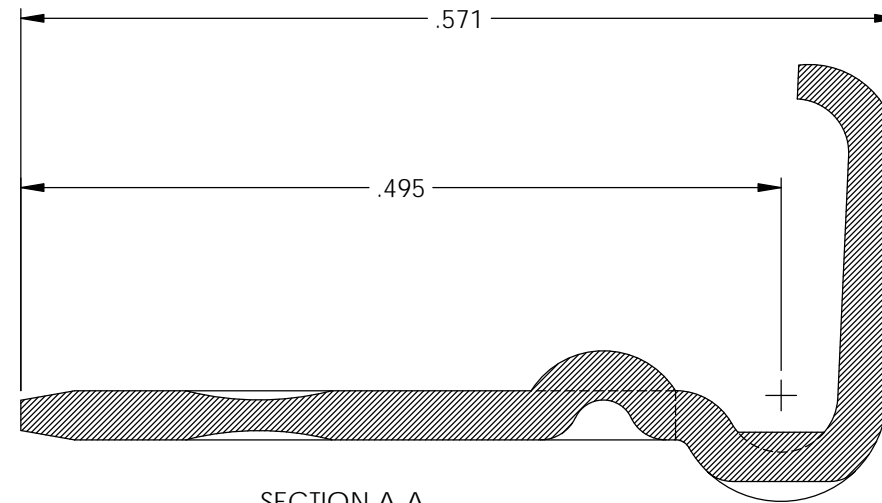
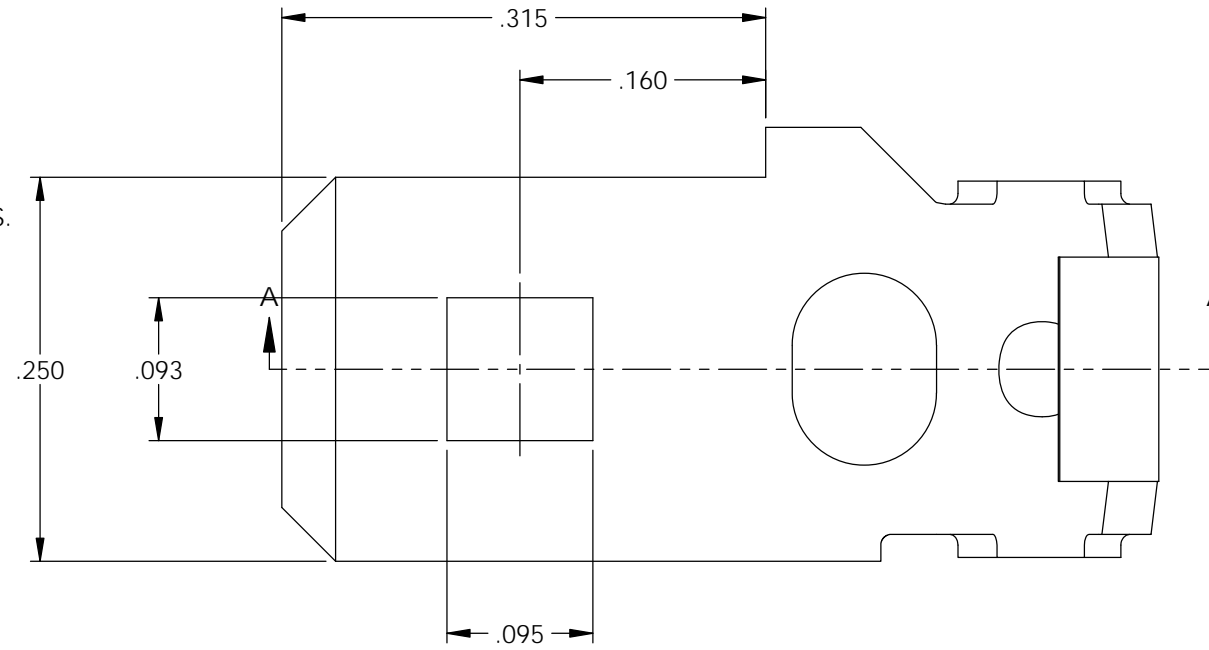
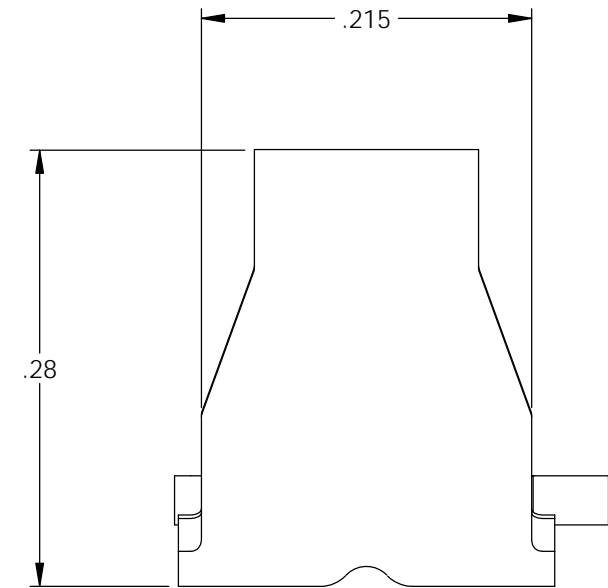



NOTES:

1. MATERIAL: .032 THICK BRASS  
#2 TEMPER (1/2 HARD)  
PER ETCO METAL CODE 2-0840.
2. MATERIAL: .032 THICK PRETINNED BRASS  
#2 TEMPER (1/2 HARD)  
PER ETCO METAL CODE 2-1840.
3. MATERIAL: .032 THICK NICKEL PLATED BRASS  
#2 TEMPER (1/2 HARD)  
PER ETCO METAL CODE XXXXX.
4. PARTS MAY BE COATED WITH A LIGHT FILM OF LUBRICATION USED IN THE MANUFACTURING PROCESS.
5. WIRE RANGE: 12-18 AWG.

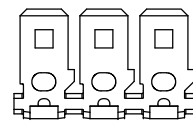
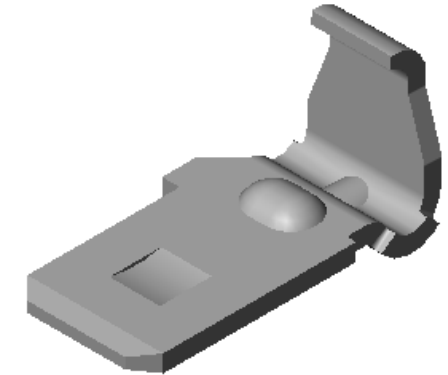


SECTION A-A  
SCALE 8 : 1

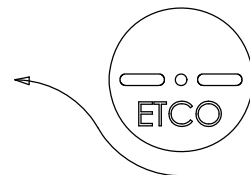


Part Number	Mat'l	
3000M 3C	Note 2	X
3000M 3CB	Note 1	X
3000M 3CN	Note 3	



Rev.	Description of Change/ SCN#	Date
-	Approved For Mfg SCJ	6/29/21



DIRECTION TOWARD APPLICATOR,  
EARS UP, TO THE FRONT,  
FROM RIGHT



# UNCONTROLLED COPY

 THIRD ANGLE PROJECTION TOLERANCES UNLESS OTHERWISE SPECIFIED INCHES: .XX - ±.030 .XXX - ±.015 ANGLES: ±5°	TOOL NO. <b>1027</b>	Title: <b>.032 x .250 Flag Male</b>	
		DO NOT SCALE DWG.	Drawn By: <b>S.Johnson</b>
ETCO Incorporated Engineered Products 25 Bellows Street Warwick, RI 02888 Phone: (401) 467-2400 Fax: (401) 467-9230 www.ETCO.com		Design Control By: <b>ETCO</b>	Scale: <b>8X</b> Size <b>B</b>
Dwg. No.: <b>3000M 3C cust</b>			