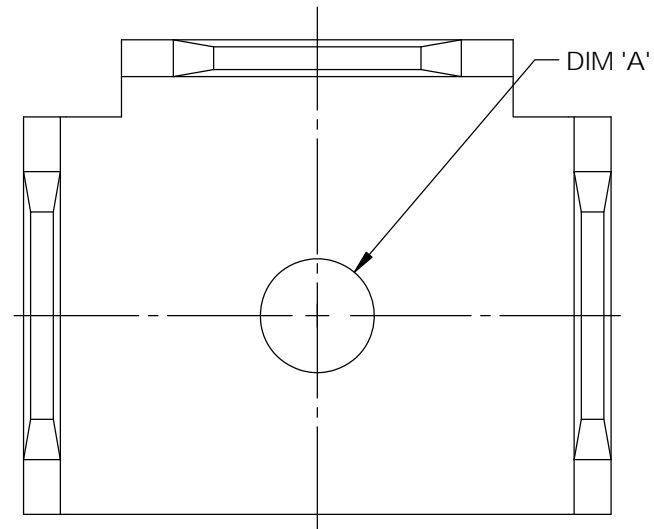



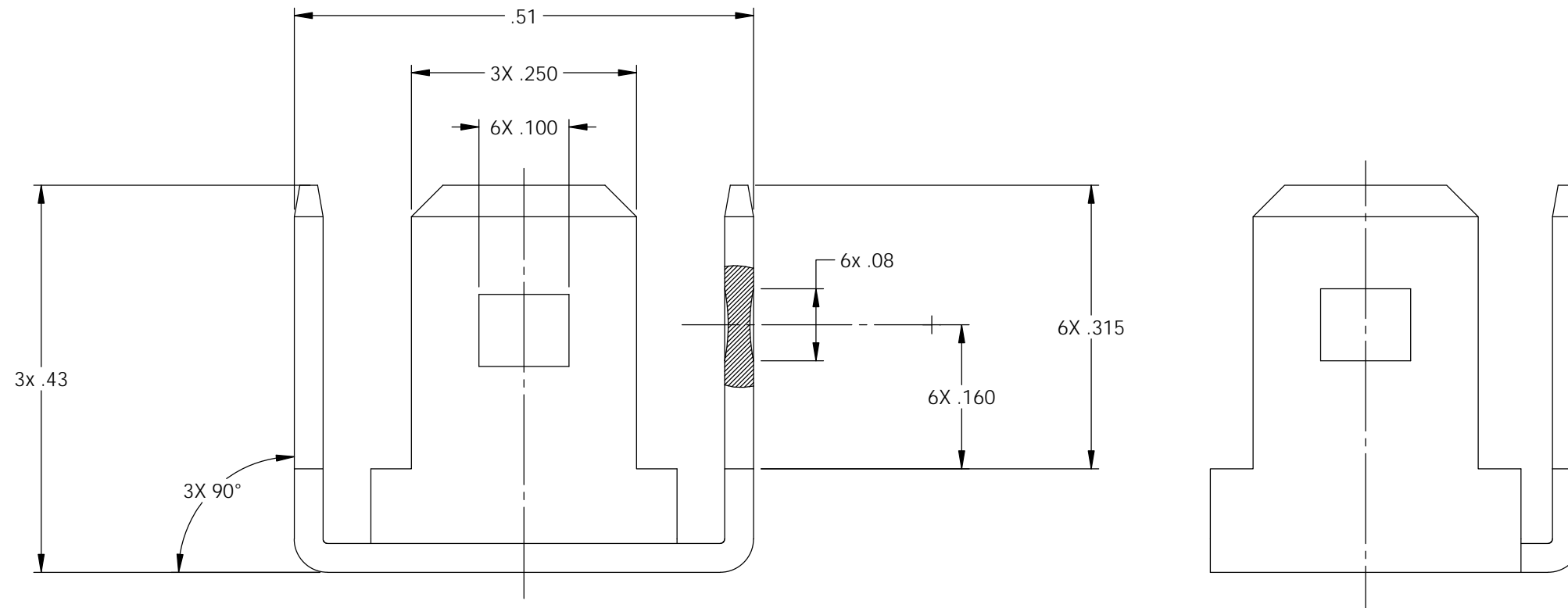
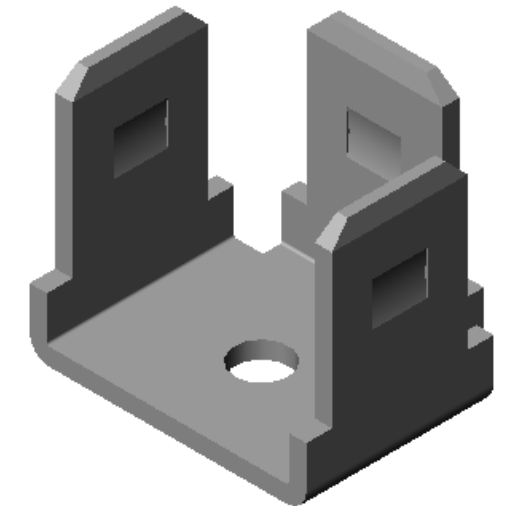
NOTES:

- MATERIAL: .032 THICK BRASS
#2 TEMPER (1/2 HARD)
PER ETCO METAL CODE 2-0912.
- MATERIAL: .032 THICK PRE-ELECTRO-TINNED BRASS
#2 TEMPER (1/2 HARD)
PER ETCO METAL CODE XXXXX.
- PARTS MAY BE COATED WITH A LIGHT FILM OF LUBRICATION USED IN THE MANUFACTURING PROCESS.
- PARTS ARE PRODUCED IN LOOSE PIECE FORM.

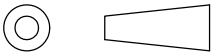



Part Number	DIM 'A'	Mat'l	
3000M 48-2	Ø .130	Note 1	X
3000M 48-2A	Ø .130	Note 2	X
3000M 48G	Ø .099	Note 1	X
3000M 48G-4	Ø .099	Note 2	X
3000M 48K	Ø .190	Note 1	X
3000M 48K-1	Ø .190	Note 2	X
3000M 48K-2	Ø .200	Note 2	
3000M 48L	Ø .154	Note 2	X
3000M 48L-2	Ø .154	Note 1	

Rev.	Description of Change/ SCN#	Date
-	Approved For Mfg SCJ	6/24/20
-	Added UR; ECR# 6065 SCJ	8/06/20



UNCONTROLLED COPY

 THIRD ANGLE PROJECTION TOLERANCES UNLESS OTHERWISE SPECIFIED INCHES: .XX - ±.030 .XXX - ±.015 ANGLES: ±5°	TOOL NO. 1038	Title: Stationary Male		
		DO NOT SCALE DWG.	Drawn By: S.Johnson	Date: 4/30/20
ETCO Incorporated Engineered Products 25 Bellows Street Warwick, RI 02888 Phone: (401) 467-2400 Fax: (401) 467-9230 www.ETCO.com		Design Control By: ETCO	Scale: 6X	Size B
Dwg. No.: 3000M 48-2, 2A, G, G-4, K, K-1, K-2, L, L-2 cust				