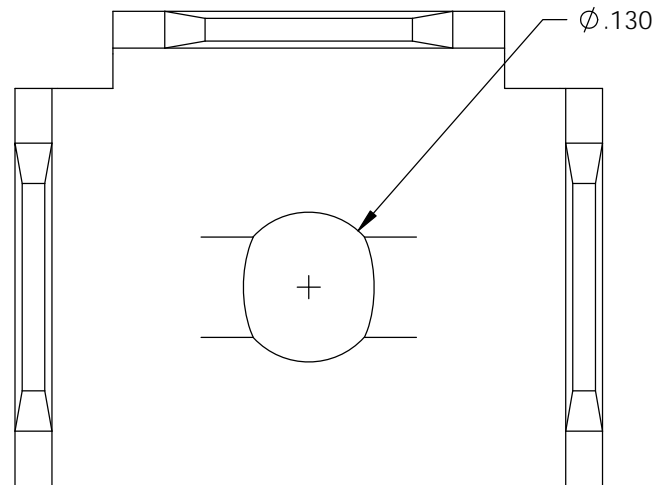


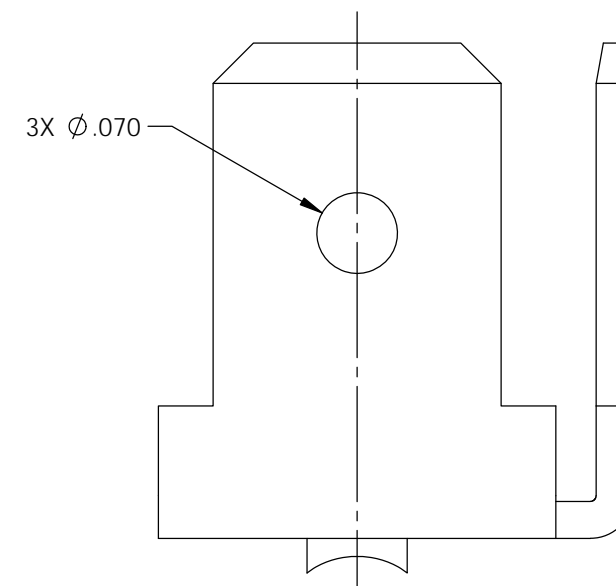
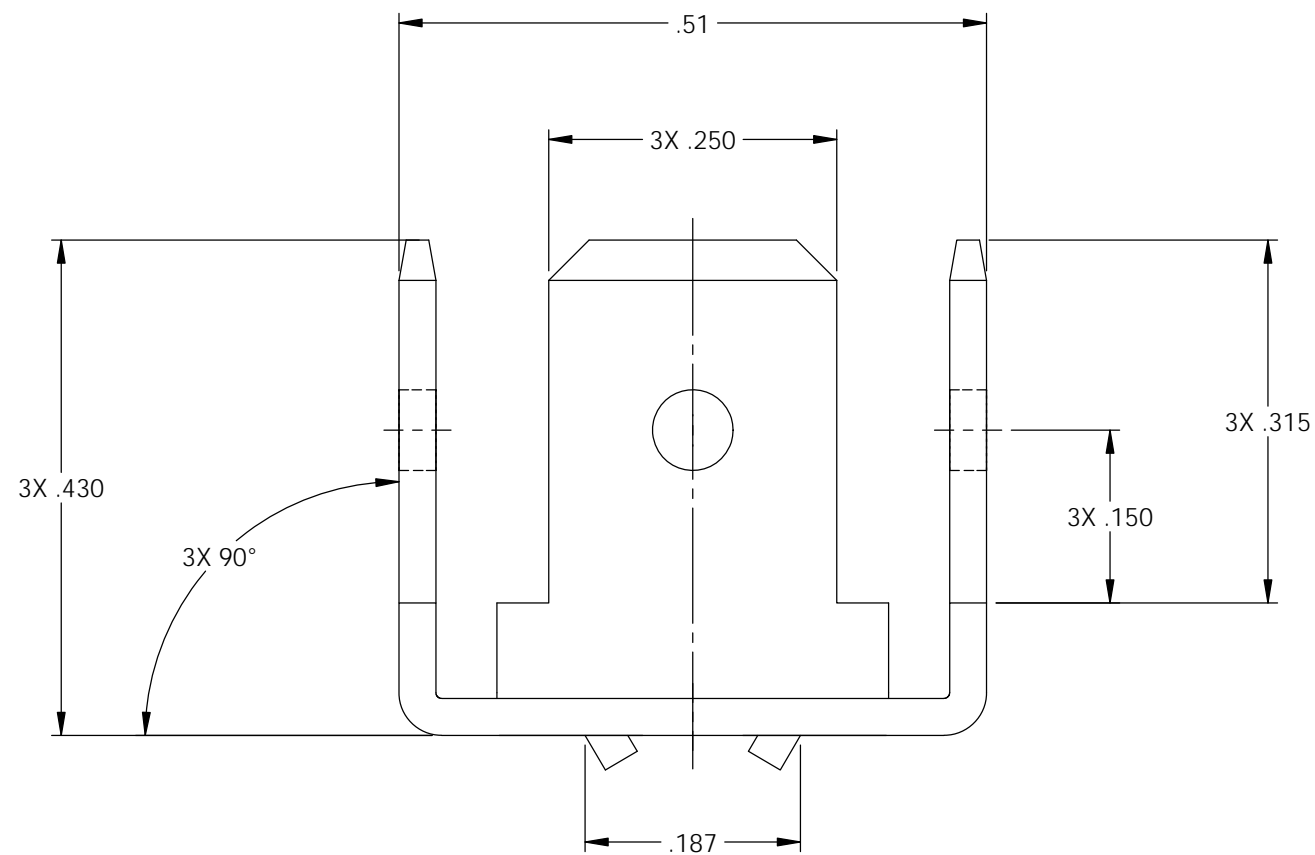
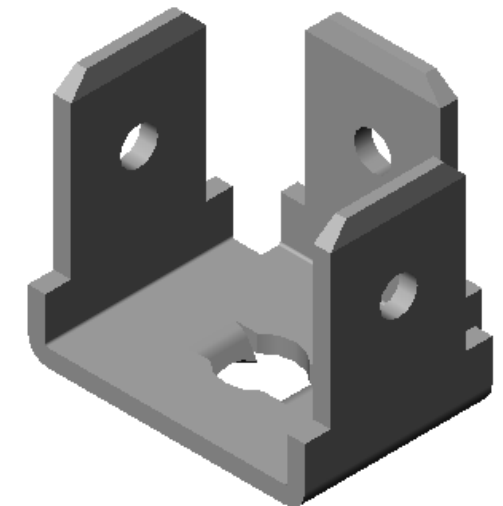
NOTES:

1. MATERIAL: .032 THICK PRE-ELECTRO-TINNED BRASS  
#2 TEMPER (1/2 HARD)  
PER ETCO METAL CODE XXXXX.
2. PARTS MAY BE COATED WITH A LIGHT FILM OF LUBRICATION USED IN THE MANUFACTURING PROCESS.
3. PARTS ARE PRODUCED IN LOOSE PIECE FORM.



Part Number	Mat'l	RU <sup>®</sup>
3000M 48C-1	Note 1	X

Rev.	Description of Change/ SCN#	Date
A	Approved For Quote SCJ	4/16/20



## UNCONTROLLED COPY

<p>THIRD ANGLE PROJECTION TOLERANCES UNLESS OTHERWISE SPECIFIED INCHES: .XX - ±.030 .XXX - ±.015 ANGLES: ±5°</p>	<p>TOOL NO. <b>1038</b></p>	<p>Title: <b>Stationary Male</b></p>	
		<p>DO NOT SCALE DWG.</p>	<p>Drawn By: S.Johnson</p>
<p>ETCO Incorporated Engineered Products 25 Bellows Street Warwick, RI 02888 Phone: (401) 467-2400 Fax: (401) 467-9230 www.ETCO.com</p>		<p>Design Control By: ETCO</p>	<p>Scale: 6X Size B</p>
		<p>Dwg. No.: <b>3000M 48C-1 cust</b></p>	