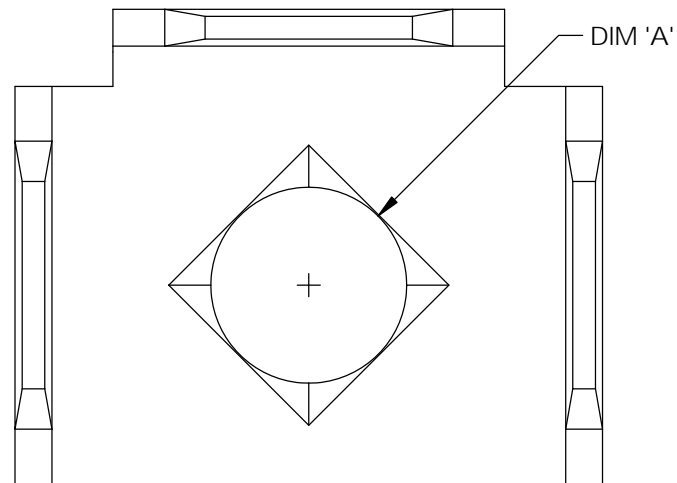



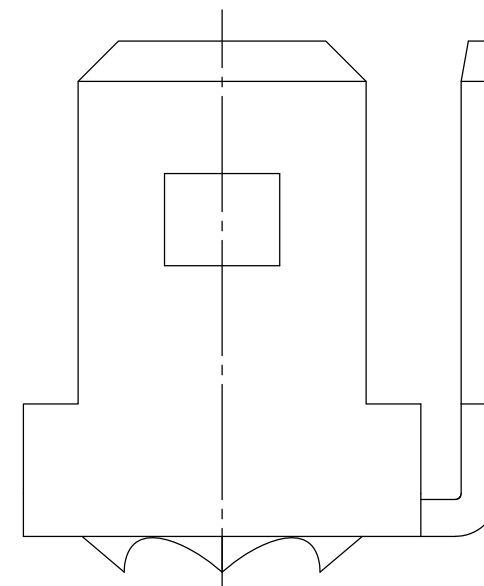
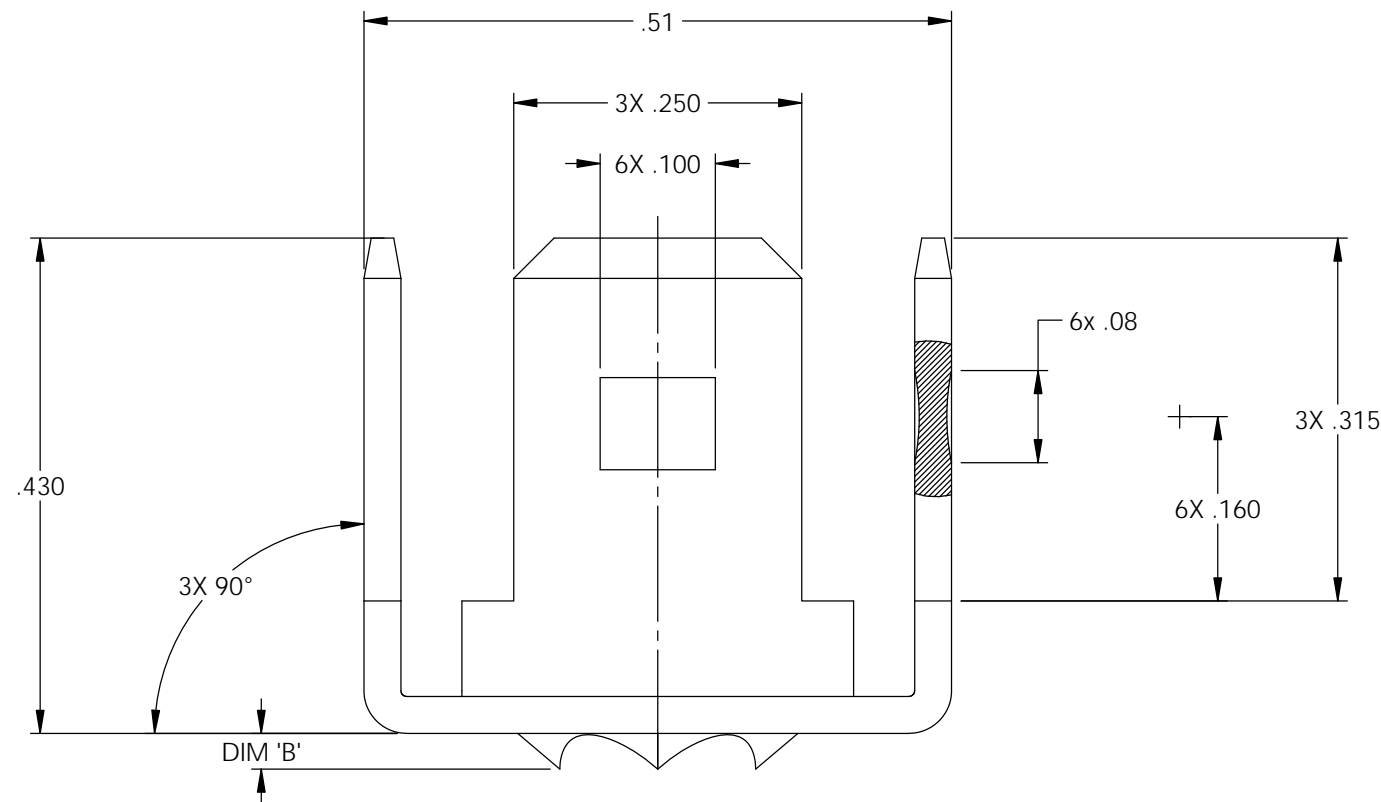
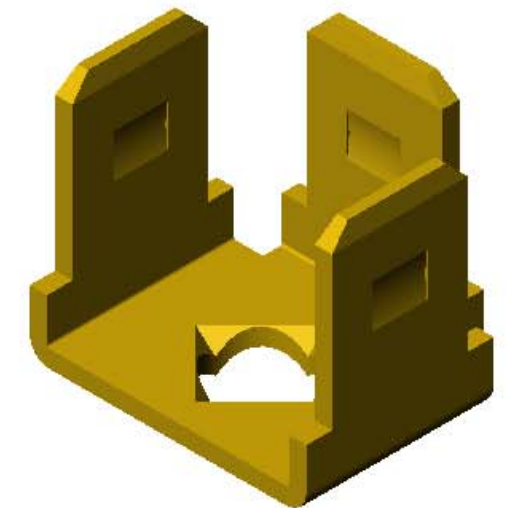
NOTES:

1. MATERIAL: .032 THICK BRASS
#2 TEMPER (1/2 HARD)
PER ETCO METAL CODE 2-0912.
2. MATERIAL: .032 THICK PRETINNED BRASS
#2 TEMPER (1/2 HARD)
PER ETCO METAL CODE XXXXX.
3. PARTS MAY BE COATED WITH A LIGHT FILM OF LUBRICATION USED IN THE MANUFACTURING PROCESS.
4. PARTS ARE PRODUCED IN LOOSE PIECE FORM.





Part Number	DIM 'A'	DIM 'B'	Mat'l	
3000M 48L-3	∅.154	.025	Note 2	X
3000M 48Z	∅.170	.035	Note 1	X

Rev.	Description of Change/ SCN#	Date
A	Approved For Quote SCJ	4/16/20



UNCONTROLLED COPY

 THIRD ANGLE PROJECTION TOLERANCES UNLESS OTHERWISE SPECIFIED INCHES: .XX - ±.030 .XXX - ±.015 ANGLES: ±5°	TOOL NO. 1038	Title: Stationary Male		
		DO NOT SCALE DWG.	Drawn By: S.Johnson	Date: 4/16/20
ETCO Incorporated Engineered Products 25 Bellows Street Warwick, RI 02888 Phone: (401) 467-2400 Fax: (401) 467-9230 www.ETCO.com		Design Control By: ETCO	Scale: 6X	Size B
		Dwg. No.: 3000M 48L-3, 48Z cust		