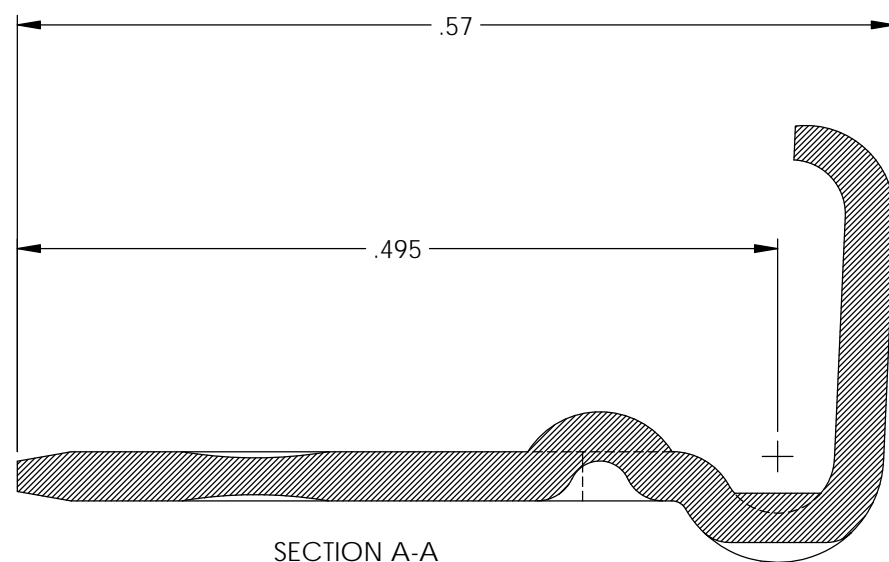
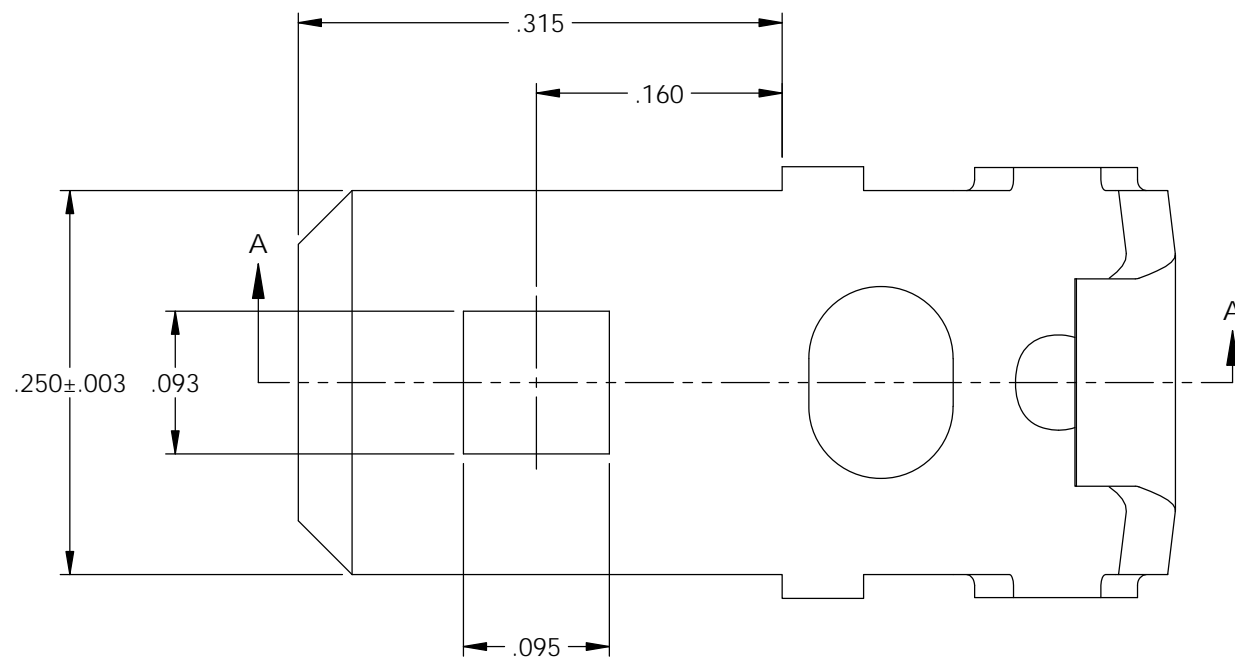


NOTES:

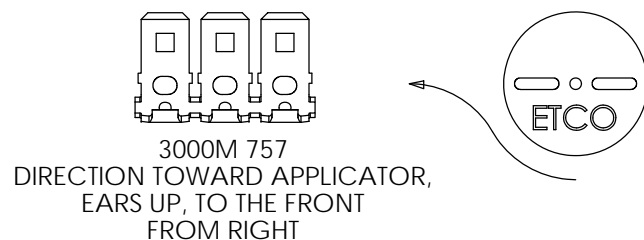
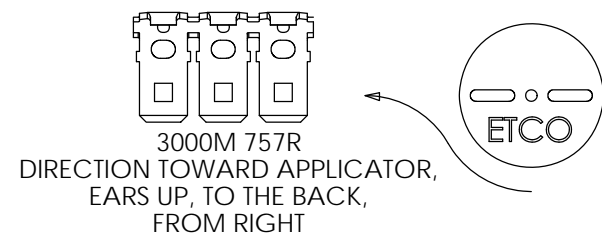
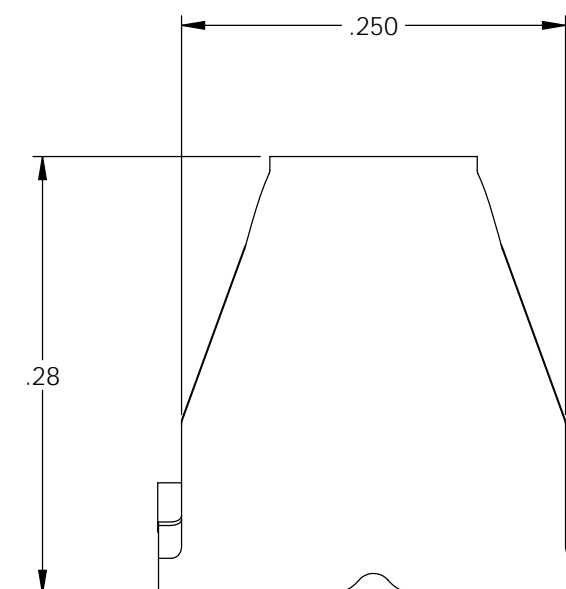
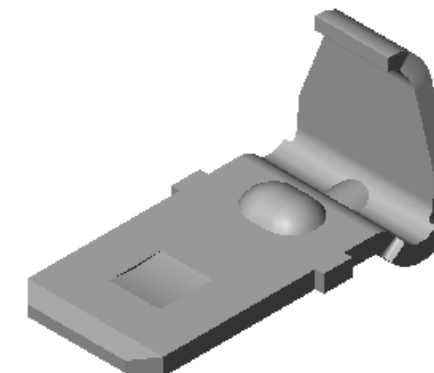
1. MATERIAL: .032 THICK BRASS  
#2 TEMPER (1/2 HARD)  
PER ETCO METAL CODE 2-0840.
2. MATERIAL: .032 THICK PRETINNED BRASS  
#2 TEMPER (1/2 HARD)  
PER ETCO METAL CODE 2-1840.
3. PARTS MAY BE COATED WITH A LIGHT FILM  
OF LUBRICATION USED IN THE  
MANUFACTURING PROCESS.
4. WIRE RANGE: 12-18 AWG.



SECTION A-A  
SCALE 8 : 1

Part Number	Mat'l	
3000M 757A	Note 2	X
3000M 757AB	Note 1	X
3000M 757AR	Note 2	X

Rev.	Description of Change/ SCN#	Date
-	Approved For Mfg SCJ	7/21/21



# UNCONTROLLED COPY

 THIRD ANGLE PROJECTION TOLERANCES UNLESS OTHERWISE SPECIFIED INCHES: .XX - ±.030 .XXX - ±.015 ANGLES: ±5°	TOOL NO. <b>1027</b>	Title: .032 x .250 Flag Male		
		DO NOT SCALE DWG.	Drawn By: S.Johnson	Date: 7/21/20
ETCO Incorporated Engineered Products 25 Bellows Street Warwick, RI 02888 Phone: (401) 467-2400 Fax: (401) 467-9230 www.ETCO.com		Design Control By: ETCO	Scale: 8X	Size B
		Dwg. No.: <b>3000M 757 cust</b>		