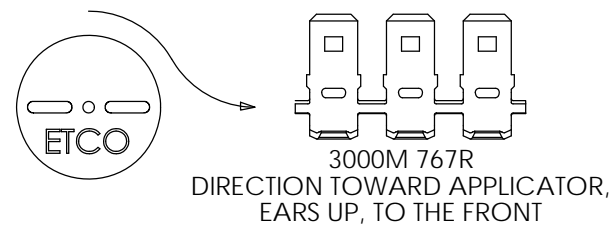
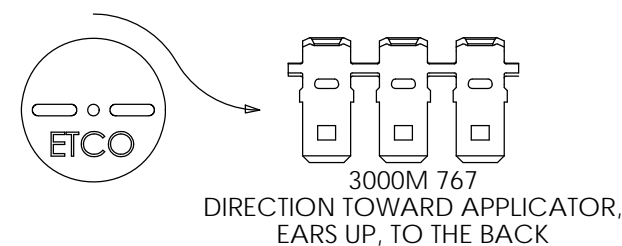
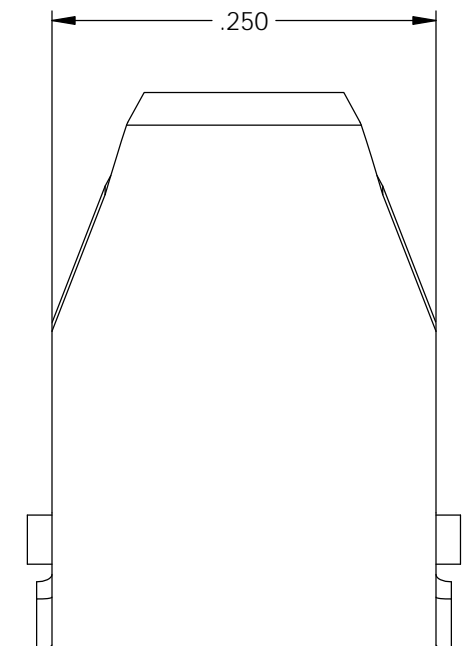
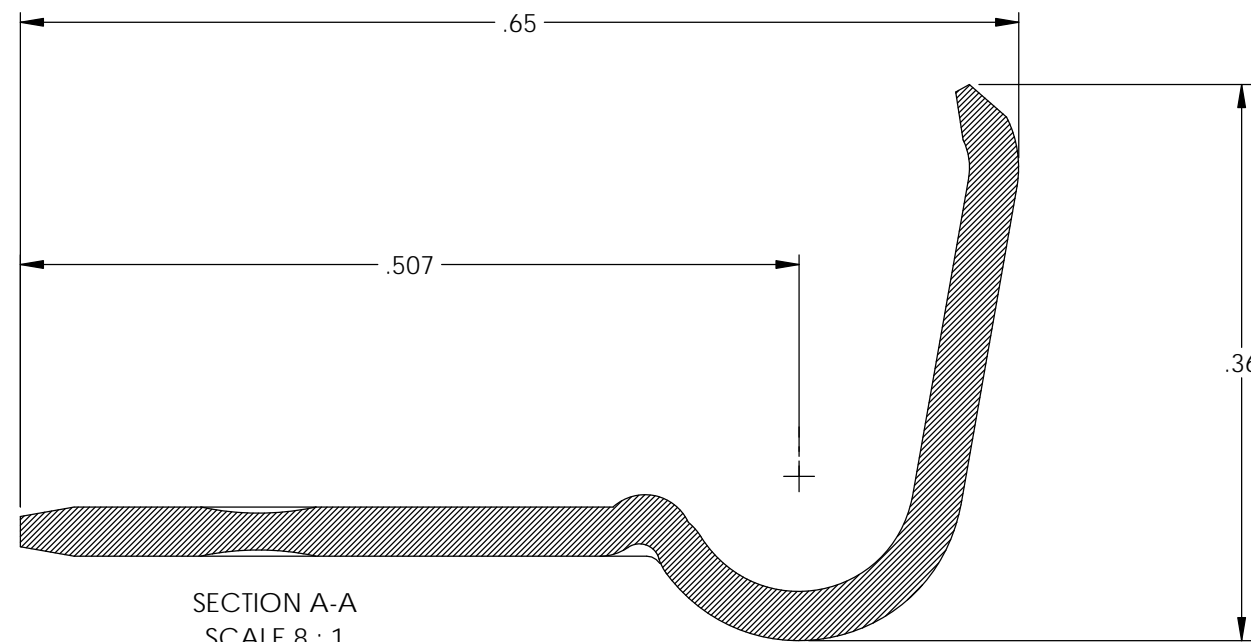
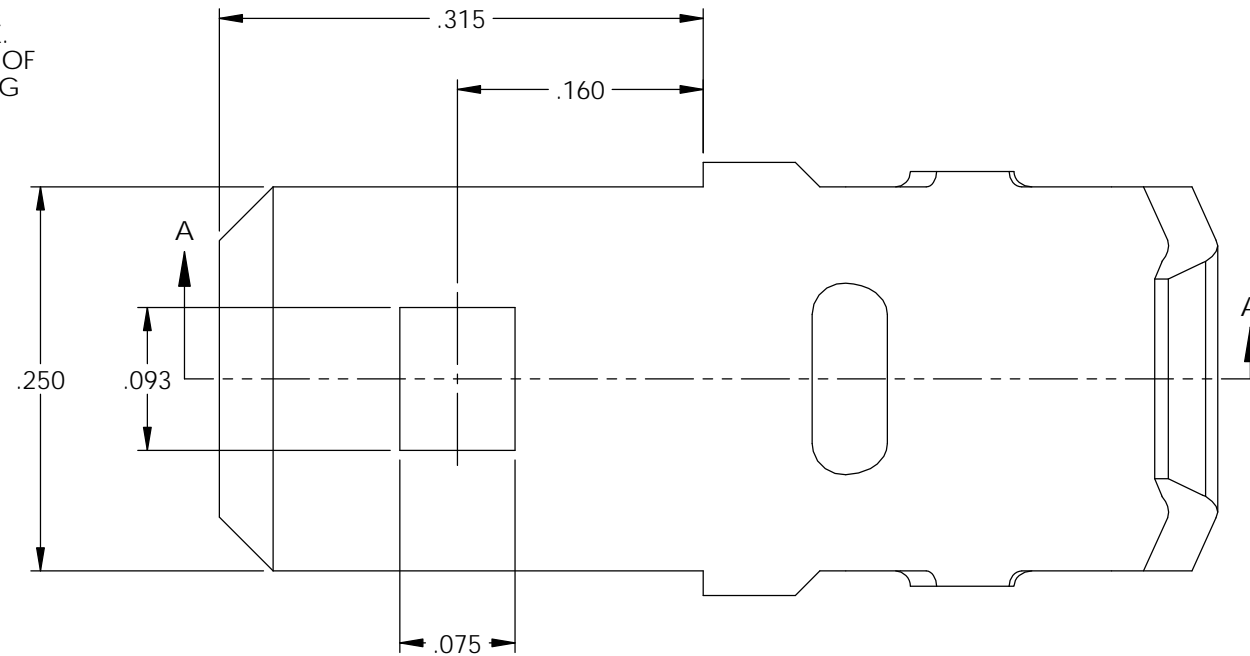


NOTES:

- MATERIAL: .032 THICK, C110 COPPER, #2 TEMPER (1/2 HARD) PER ETCO METAL CODE XXXXX.
- MATERIAL: .032 THICK, PRE-TINNED C110 COPPER, #2 TEMPER (1/2 HARD) PER ETCO METAL CODE XXXXX.
- PARTS MAY BE COATED WITH A LIGHT FILM OF LUBRICATION USED IN THE MANUFACTURING PROCESS.
- WIRE RANGE: 10-12 AWG.

Part Number	Mat'l	Rewind	UL
3000M 767A	Note 2	No	X
3000M 767AB	Note 1	No	X
3000M 767AR	Note 2	Yes	X

Rev.	Description of Change/ SCN#	Date
A	Approved For Quote SCJ	3/25/20



UNCONTROLLED COPY

<p>THIRD ANGLE PROJECTION TOLERANCES UNLESS OTHERWISE SPECIFIED INCHES: .XX - ±.030 .XXX - ±.015 ANGLES: ±5°</p>	<p>TOOL NO. 1030</p>	<p>Title: .032 x .250 Flag Male</p>		
		<p>DO NOT SCALE DWG.</p>	<p>Drawn By: S.Johnson</p>	<p>Date: 3/25/20</p>
<p>ETCO Incorporated Engineered Products 25 Bellows Street Warwick, RI 02888 Phone: (401) 467-2400 Fax: (401) 467-9230 www.ETCO.com</p>		<p>Design Control By: ETCO</p>	<p>Scale: 8X</p>	<p>Size B</p>
		<p>Dwg. No.: 3000M 767 cust</p>		