
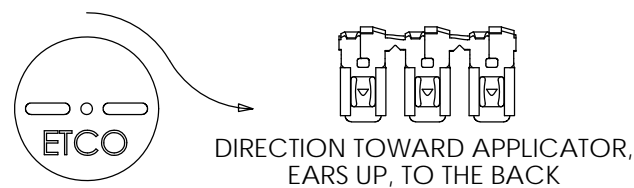
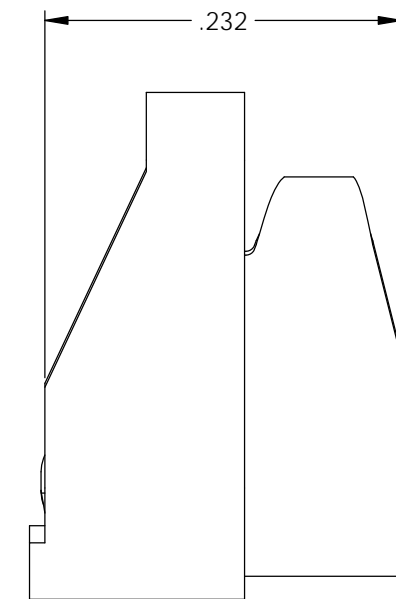
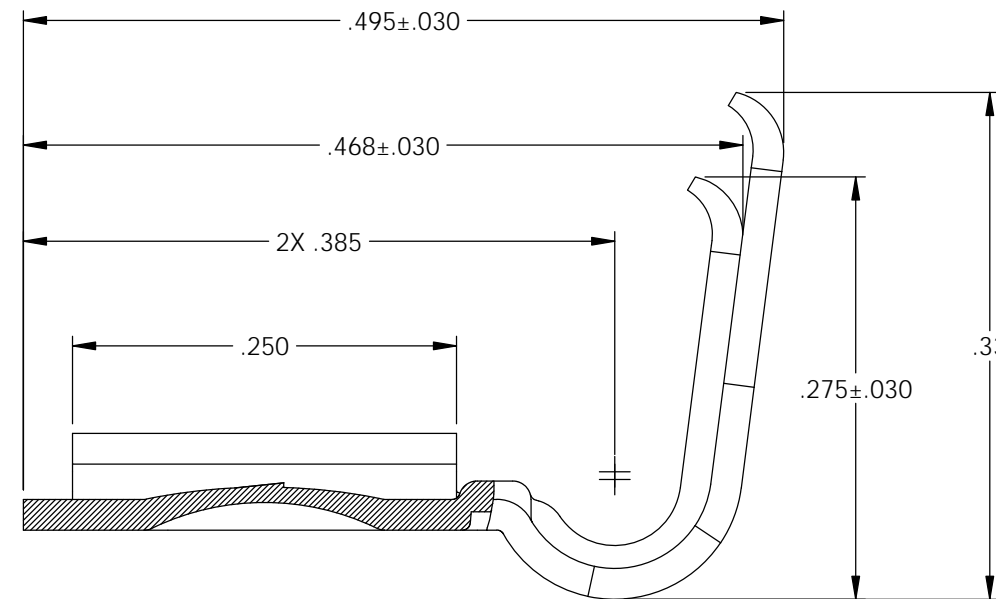
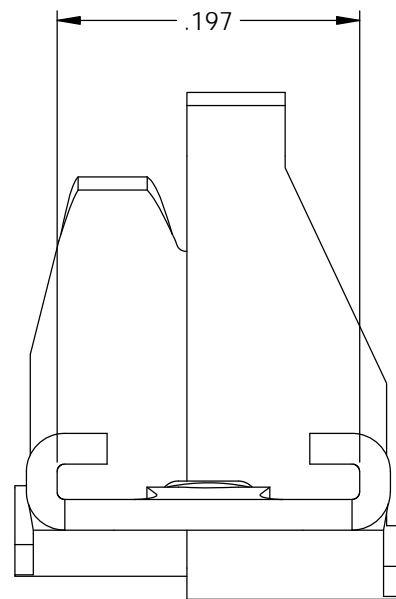
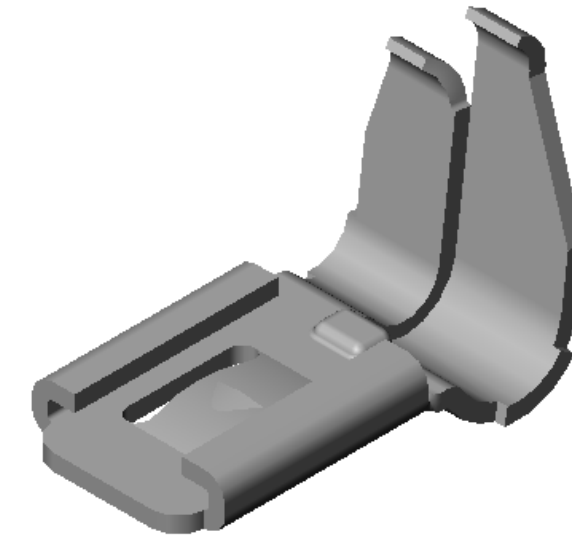
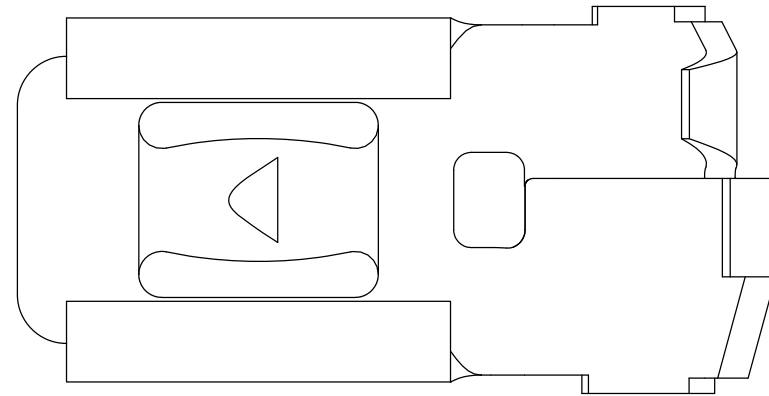


NOTES:

- MATERIAL: .020 THICK BRASS
#2 TEMPER (1/2 HARD)
PER ETCO METAL CODE XXXXX.
- MATERIAL: .020 THICK PRETINNED BRASS
#2 TEMPER (1/2 HARD)
PER ETCO METAL CODE XXXXX.
- PARTS MAY BE COATED WITH A LIGHT FILM
OF LUBRICATION USED IN THE
MANUFACTURING PROCESS.
- INSERTION/WITHDRAWAL FORCES ARE
INDICATED ON THE QUALITY INSPECTION PLAN.
- WIRE RANGE: 20-16 AWG.
- INSULATION DIAMETER RANGE: ϕ .075- ϕ .125.

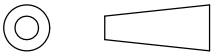

Part Number	Mat'l	
3500H 11A	Note 2	X
3500H 11AB	Note 1	X

Rev.	Description of Change/ SCN#	Date
A	Approved For Quote SCJ	4/07/20



THIS PRINT IS THE PROPERTY OF ETCO INCORPORATED. NO PART OF THIS DESIGN MAY BE USED IN ANY WAY WITHOUT WRITTEN CONSENT FROM ETCO INCORPORATED.

UNCONTROLLED COPY

 THIRD ANGLE PROJECTION TOLERANCES UNLESS OTHERWISE SPECIFIED INCHES: .XX - ±.030 .XXX - ±.015 ANGLES: ±5°	TOOL NO. 1032	Title: .020 x .187 Flag Disconnect	
		DO NOT SCALE DWG. Drawn By: S.Johnson Design Control By: ETCO Dwg. No.: 3500H 11 cust	Date: 4/07/20 Scale: 8X Size: B

ETCO Incorporated
 Engineered Products
 25 Bellows Street
 Warwick, RI 02888
 Phone: (401) 467-2400
 Fax: (401) 467-9230
 www.ETCO.com