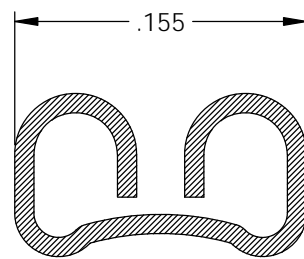
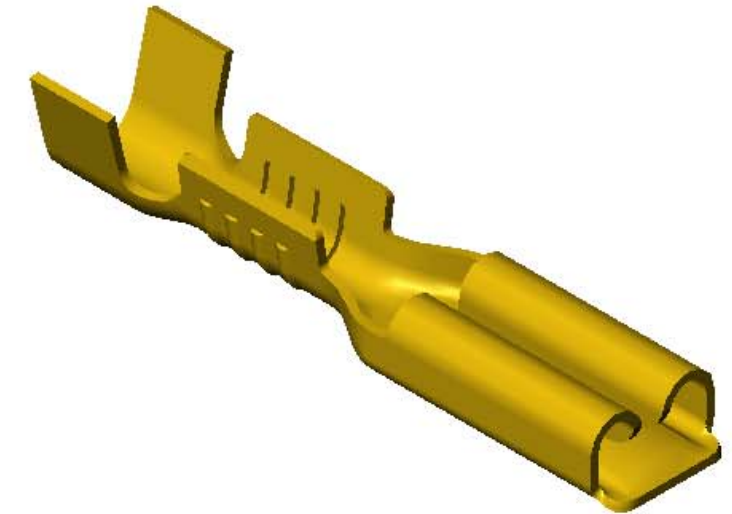
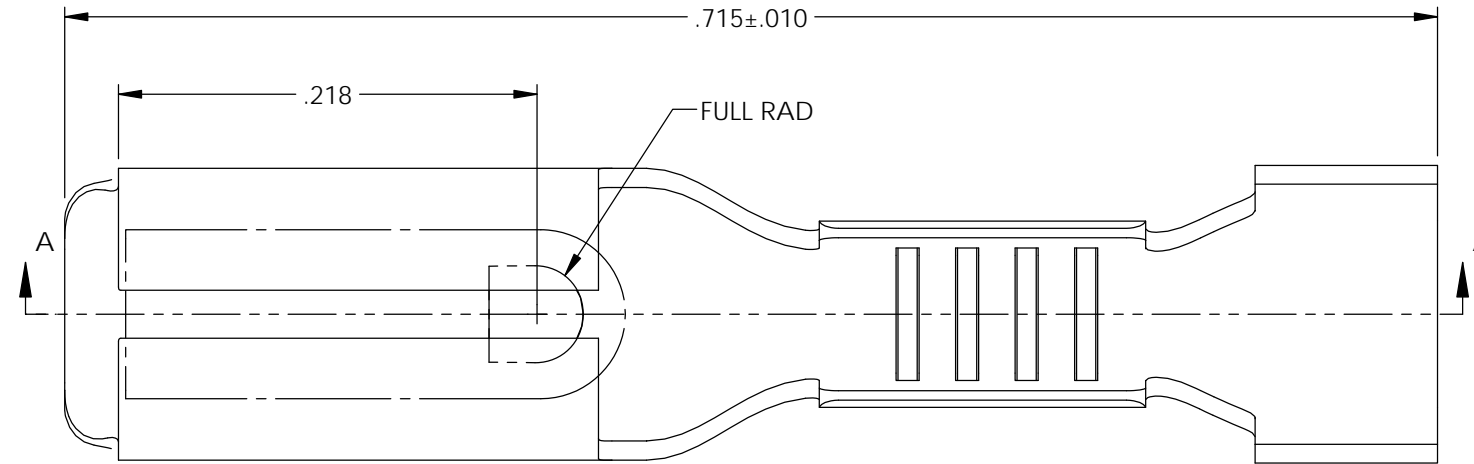


NOTES:

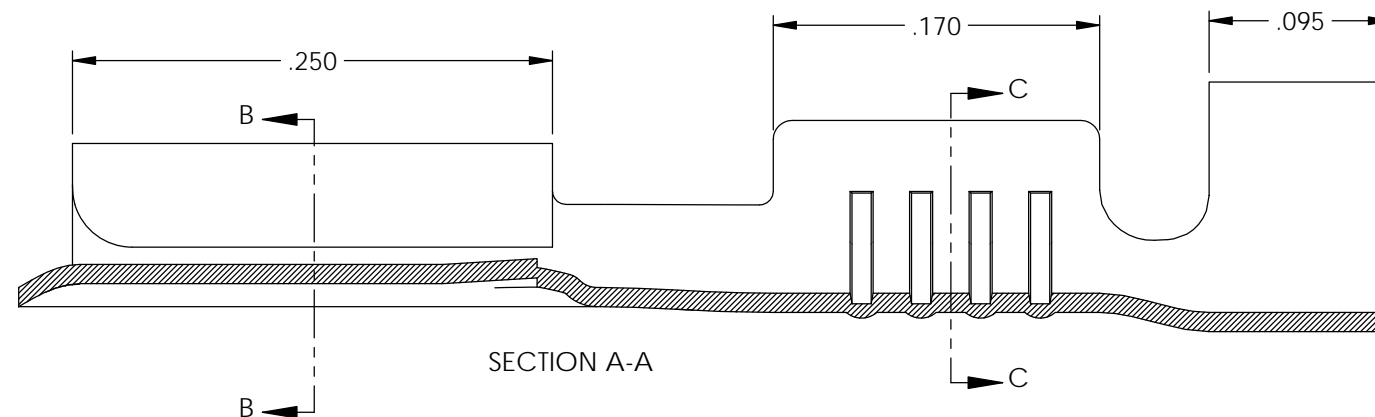
- MATERIAL: .010 THICK BRASS
#4 TEMPER (FULL HARD)
PER ETCO METAL CODE XXXXX.
- MATERIAL: .010 THICK PRETINNED BRASS
#4 TEMPER (FULL HARD)
PER ETCO METAL CODE 2-1083.
- PARTS MAY BE COATED WITH A LIGHT FILM OF LUBRICATION USED IN THE MANUFACTURING PROCESS.
- INSERTION/WITHDRAWAL FORCES ARE INDICATED ON THE QUALITY INSPECTION PLAN.
- TO ACCEPT .014 X .110/.125 MALE BLADE.
- WIRE RANGE: 24-18 AWG.
- INSULATION RANGE: ϕ .040- ϕ .090

Part Number	Mat'l
3650H 101A	Note 2
3650H 101AB	Note 1

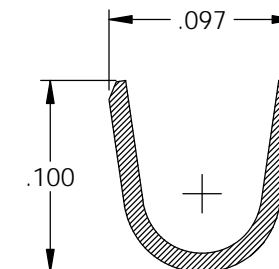
Rev.	Description of Change/ SCN#	Date
A	Approved For Quote SCJ	6/10/20



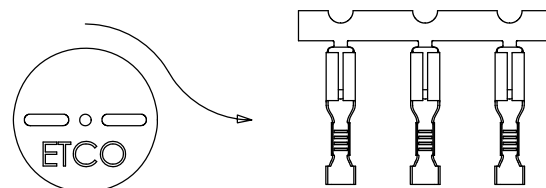
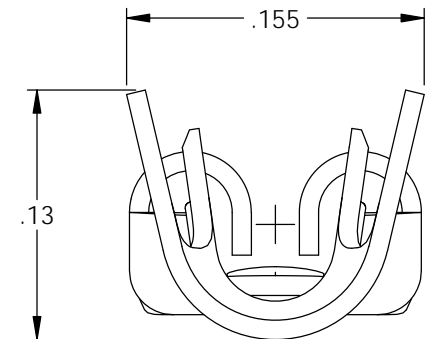
SECTION B-B



SECTION A-A



SECTION C-C



DIRECTION TOWARD APPLICATOR,
EARS UP, TO THE FRONT

THIS PRINT IS THE PROPERTY OF ETCO INCORPORATED. NO PART OF THIS DESIGN MAY BE USED IN ANY WAY WITHOUT WRITTEN CONSENT FROM ETCO INCORPORATED.

UNCONTROLLED COPY

<p>THIRD ANGLE PROJECTION TOLERANCES UNLESS OTHERWISE SPECIFIED INCHES: .XX - ±.030 .XXX - ±.015 ANGLES: ±5°</p>	<p>TOOL NO. 1018</p>	<p>Title: .014 x .110/.125 Female Disconnect</p>		
		<p>DO NOT SCALE DWG.</p>	<p>Drawn By: S.Johnson Date: 6/10/20</p>	<p>Design Control By: ETCO</p>
		<p>Dwg. No.: 3650H 101 cust</p>		

ETCO Incorporated
Engineered Products
25 Bellows Street
Warwick, RI 02888
Phone: (401) 467-2400
Fax: (401) 467-9230
www.ETCO.com