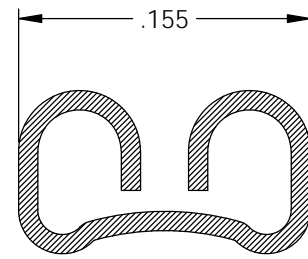
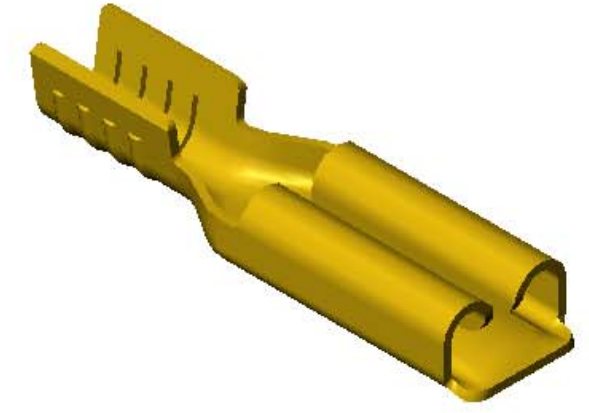
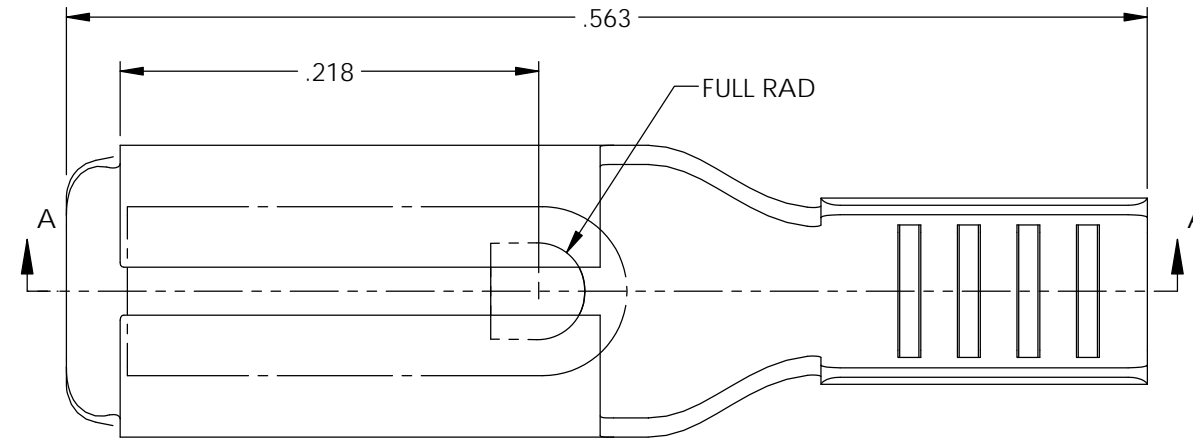


NOTES:

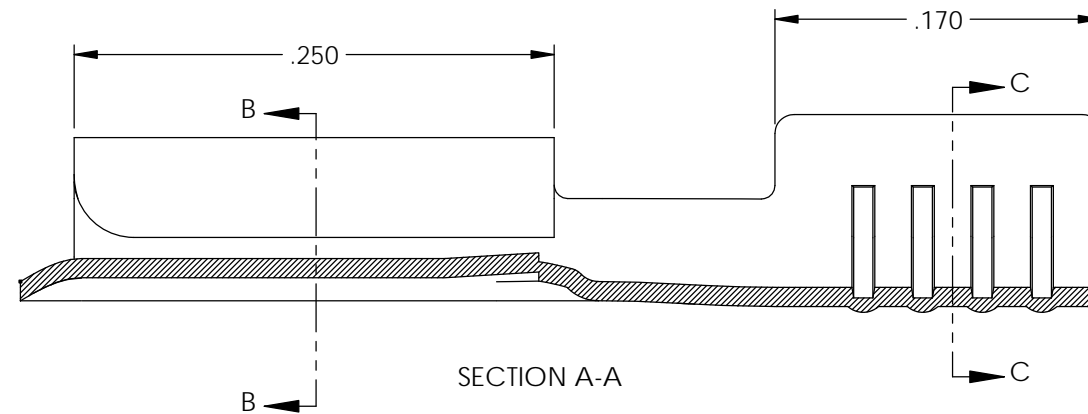
1. MATERIAL: .010 THICK BRASS  
#4 TEMPER (FULL HARD)  
PER ETCO METAL CODE XXXXX.
2. MATERIAL: .010 THICK PRETINNED BRASS  
#4 TEMPER (FULL HARD)  
PER ETCO METAL CODE 2-1083.
3. PARTS MAY BE COATED WITH A LIGHT FILM OF LUBRICATION USED IN THE MANUFACTURING PROCESS.
4. INSERTION/WITHDRAWAL FORCES ARE INDICATED ON THE QUALITY INSPECTION PLAN.
5. TO ACCEPT .020 X .110/.125 MALE BLADE.
6. WIRE RANGE: 24-18 AWG.

Part Number	Mat'l
3650H 102A-2	Note 2
3650H 102AB-2	Note 1

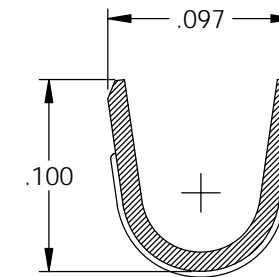
Rev.	Description of Change/ SCN#	Date
A	Approved For Quote SCJ	6/10/20



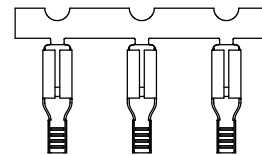
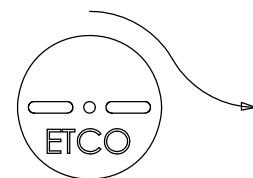
SECTION B-B



SECTION A-A



SECTION C-C



DIRECTION TOWARD APPLICATOR,  
EARS UP, TO THE FRONT

# UNCONTROLLED COPY

<p>THIRD ANGLE PROJECTION TOLERANCES UNLESS OTHERWISE SPECIFIED INCHES: .XX - ±.030 .XXX - ±.015 ANGLES: ±5°</p>	<p>TOOL NO. <b>1018</b></p>	<p>Title: .110 X .032 Female Disconnect</p>	
		<p>DO NOT SCALE DWG.</p>	<p>Drawn By: S.Johnson ETCO</p>
<p>ETCO Incorporated Engineered Products 25 Bellows Street Warwick, RI 02888 Phone: (401) 467-2400 Fax: (401) 467-9230 www.ETCO.com</p>		<p>Design Control By: ETCO</p>	<p>Scale: 10X Size B</p>
<p>Dwg. No.: <b>3650H 102-2 cust</b></p>			