
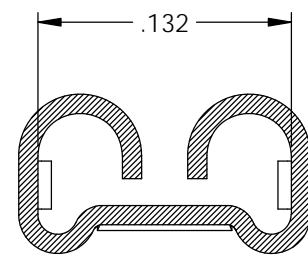
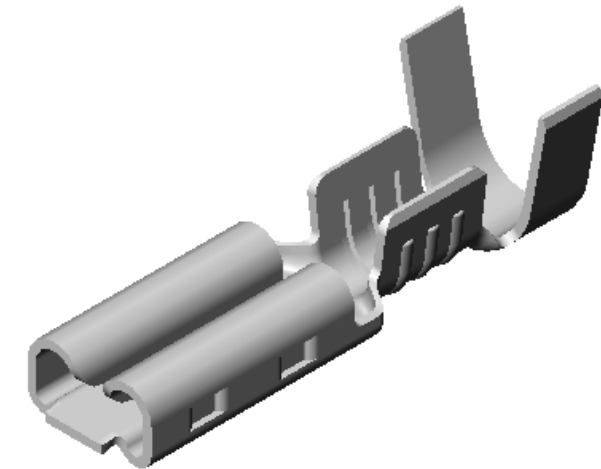
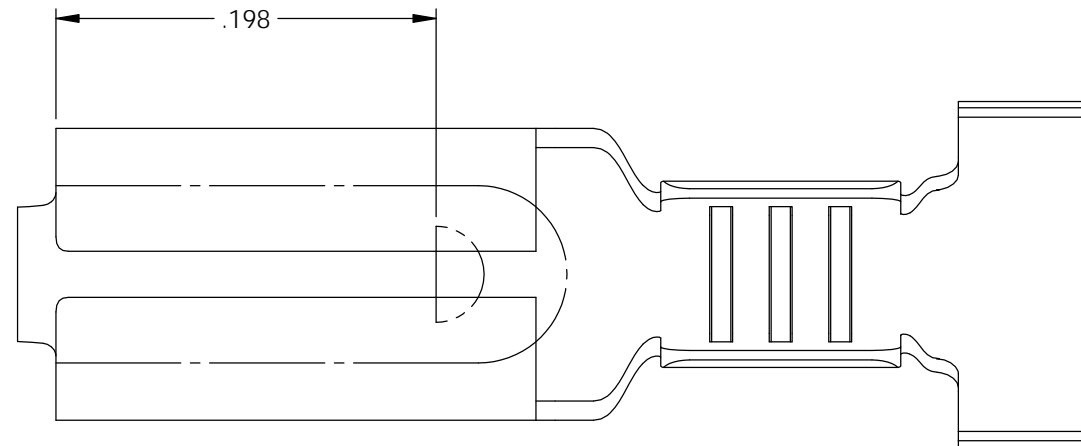


NOTES:

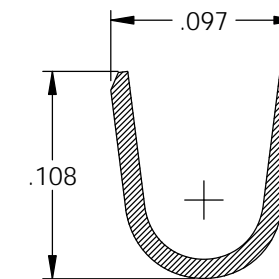
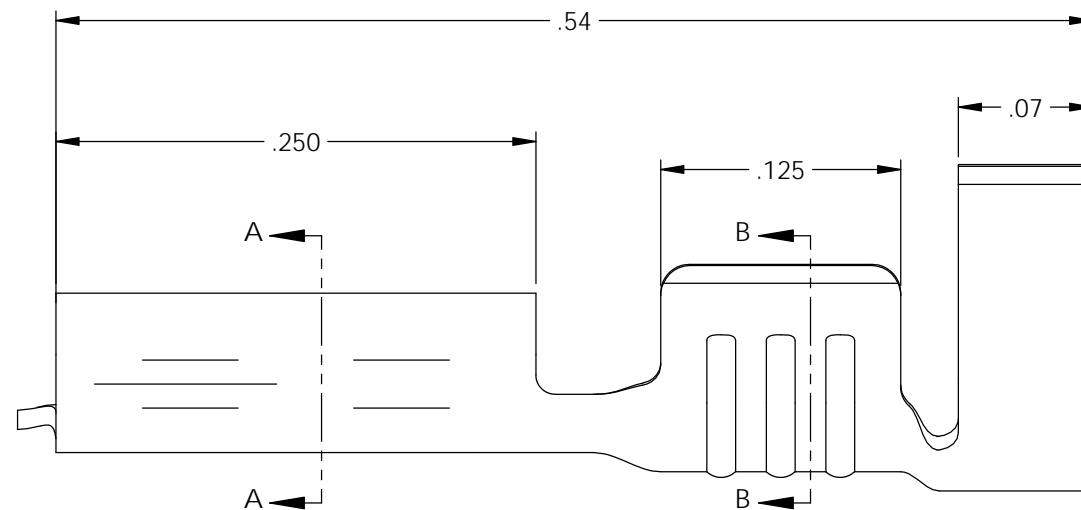
1. MATERIAL: .010 THICK, BRASS, #4 TEMPER (FULL HARD) PER ETCO METAL CODE XXXXX.
2. MATERIAL: .010 THICK, PRE-TINNED BRASS, #4 TEMPER (FULL HARD) PER ETCO METAL CODE 2-1083.
4. PARTS MAY BE COATED WITH A LIGHT FILM OF LUBRICATION USED IN THE MANUFACTURING PROCESS.
5. INSERTION/WITHDRAWAL FORCES ARE INDICATED ON THE QUALITY INSPECTION PLAN.
6. WIRE RANGE: 16-20 AWG.
7. INSULATION DIAMETER RANGE: ϕ .075- ϕ .125.

Part Number	Mat'l	
3650H 126A	Note 2	X
3650H 126AB	Note 1	X

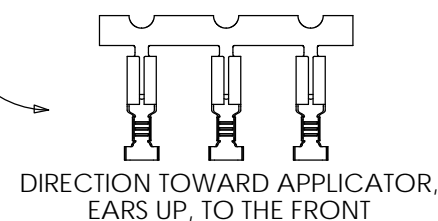
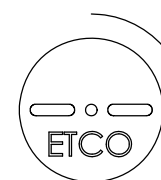
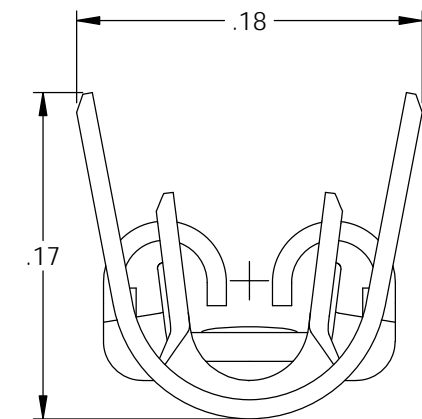
Rev.	Description of Change/ SCN#	Date
A	Approved For Quote SCJ	6/08/20



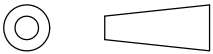

SECTION A-A



SECTION B-B



UNCONTROLLED COPY

 THIRD ANGLE PROJECTION TOLERANCES UNLESS OTHERWISE SPECIFIED INCHES: .XX - \pm .030 .XXX - \pm .015 ANGLES: \pm 5°	TOOL NO. 1018	Title: .020 x .110 FEMALE DISCONNECT		
		DO NOT SCALE DWG.	Drawn By: S.JOHNSON	Date: 6/08/20
ETCO Incorporated Engineered Products 25 Bellows Street Warwick, RI 02888 Phone: (401) 467-2400 Fax: (401) 467-9230 www.ETCO.com		Design Control By: ETCO	Scale: 10X	Size B
		Dwg. No.: 3650H 126 cust		