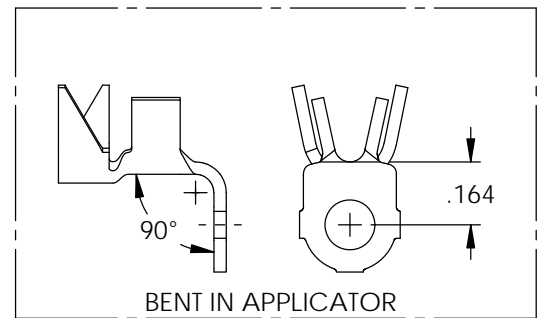
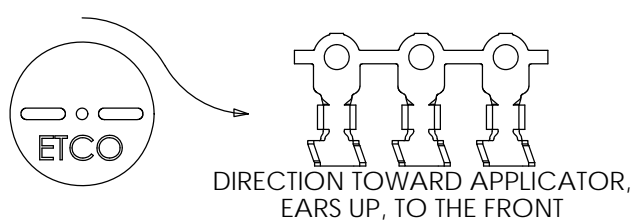
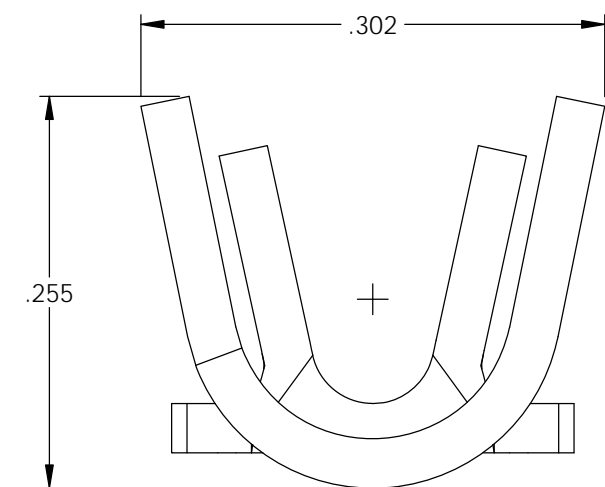
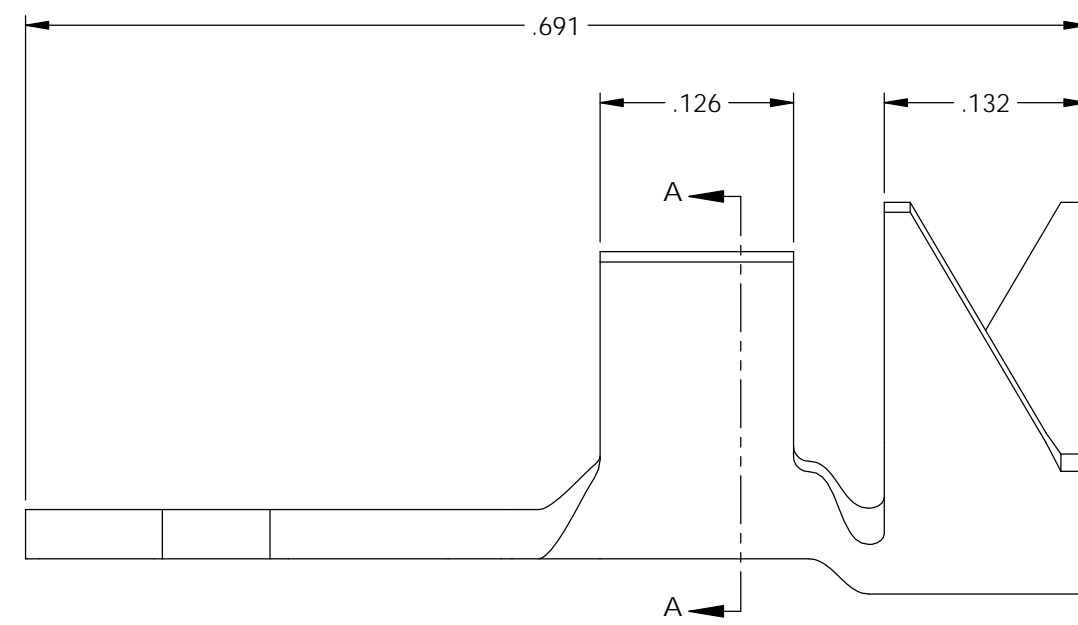
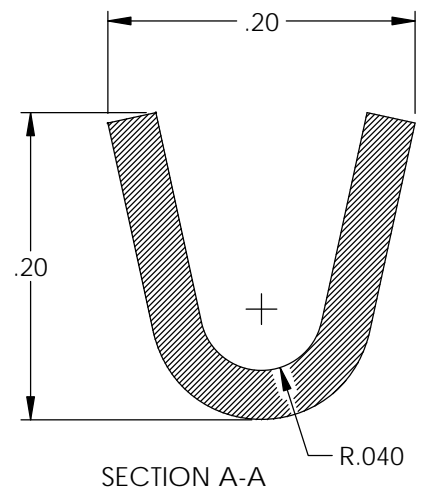
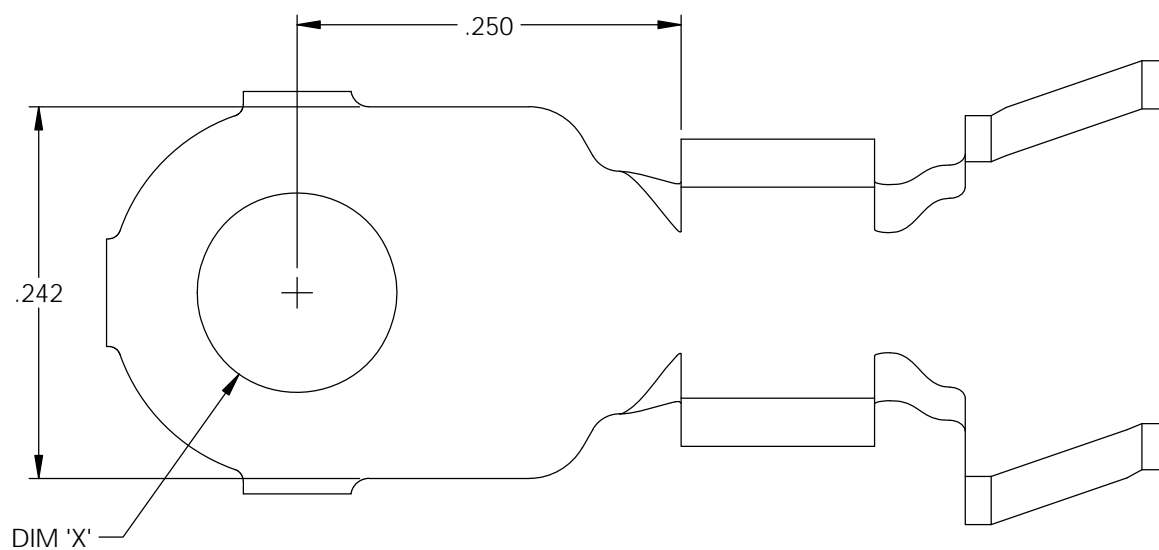


NOTES:

- MATERIAL: .032 THICK BRASS
#2 TEMPER (1/2 HARD)
PER ETCO METAL CODE XXXXX.
- MATERIAL: .032 THICK PRETINNED BRASS
#2 TEMPER (1/2 HARD)
PER ETCO METAL CODE XXXXX.
- PARTS MAY BE COATED WITH A LIGHT FILM OF LUBRICATION USED IN THE MANUFACTURING PROCESS.
- WIRE RANGE: 12-20 AWG.
- INSULATION DIAMETER RANGE: ϕ .075- ϕ .175.

Part Number	DIM 'X'	Mat'l	Rev.	Description of Change/ SCN#	Date
3800M 108AB-6A	ϕ .104	Note 1	A	Approved For Quote SCJ	4/28/20
3800M 108A-6A	ϕ .104	Note 2			
3800M 108AB-8A	ϕ .130	Note 1			
3800M 108A-8A	ϕ .130	Note 2			



UNCONTROLLED COPY

<p>THIRD ANGLE PROJECTION TOLERANCES UNLESS OTHERWISE SPECIFIED INCHES: .XX - \pm.030 .XXX - \pm.015 ANGLES: \pm5°</p>	<p>TOOL NO. 1041</p>	<p>Title: Ring Terminal</p>		
	<p>DO NOT SCALE DWG.</p>	<p>Drawn By: S.Johnson</p>	<p>Date: 4/28/20</p>	<p>Design Control By: ETCO</p>
<p>ETCO Incorporated Engineered Products 25 Bellows Street Warwick, RI 02888 Phone: (401) 467-2400 Fax: (401) 467-9230 www.ETCO.com</p>		<p>Scale: 8X</p>	<p>Size B</p>	<p>Dwg. No.: 3800M 108 cust</p>