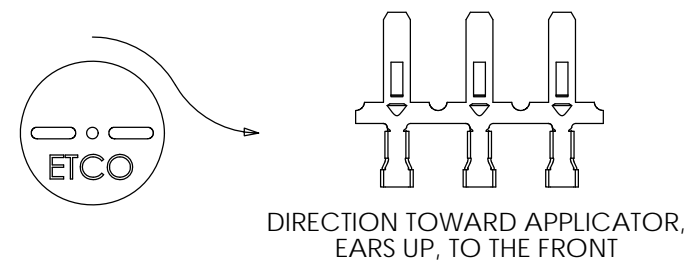
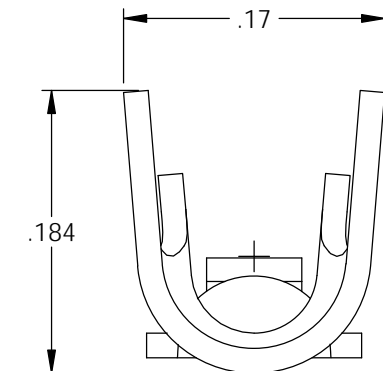
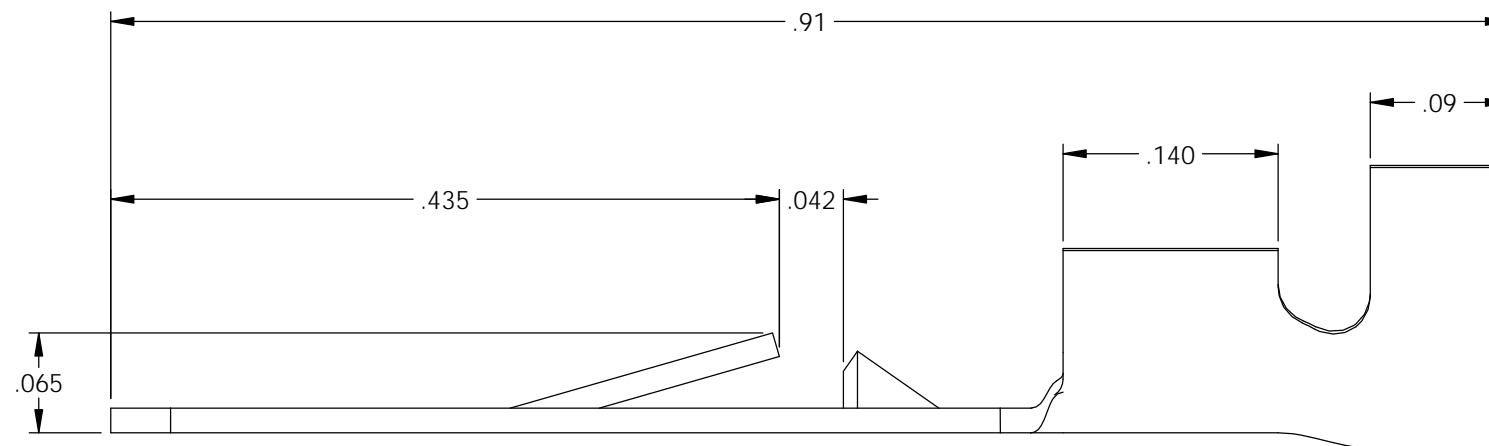
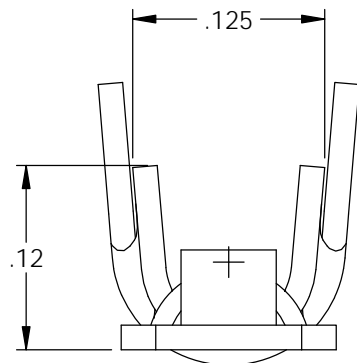
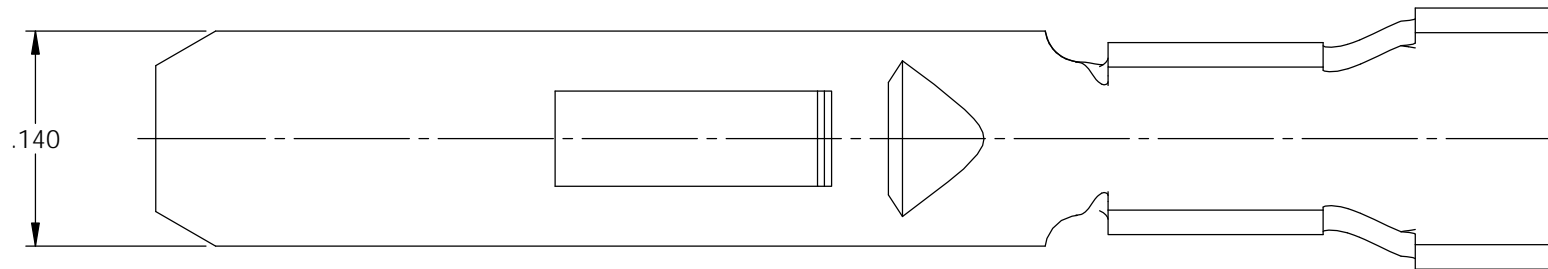


NOTES:

- MATERIAL: .016 THICK BRASS
#3 TEMPER (3/4 HARD)
PER ETCO METAL CODE XXXXX.
- PARTS MAY BE COATED WITH A LIGHT FILM OF LUBRICATION USED IN THE MANUFACTURING PROCESS.
- WIRE RANGE: 18-22 AWG.
- INSULATION DIAMETER RANGE: ϕ .075- ϕ .125.

Part Number	Mat'l
3800M 179	Note 1

Rev.	Description of Change/ SCN#	Date
A	Approved For Quote SCJ	5/28/20



UNCONTROLLED COPY

<p>THIRD ANGLE PROJECTION TOLERANCES UNLESS OTHERWISE SPECIFIED INCHES: .XX - \pm.030 .XXX - \pm.015 ANGLES: \pm5°</p>	<p>TOOL NO. 1052</p>	<p>Title: .016 x .140 Male Blade</p>		
		<p>DO NOT SCALE DWG.</p>	<p>Drawn By: S.Johnson</p>	<p>Date: 5/28/20</p>
<p>ETCO Incorporated Engineered Products 25 Bellows Street Warwick, RI 02888 Phone: (401) 467-2400 Fax: (401) 467-9230 www.ETCO.com</p>		<p>Design Control By: ETCO</p>	<p>Scale: 8X</p>	<p>Size B</p>
		<p>Dwg. No.: 3800M 179 cust</p>		