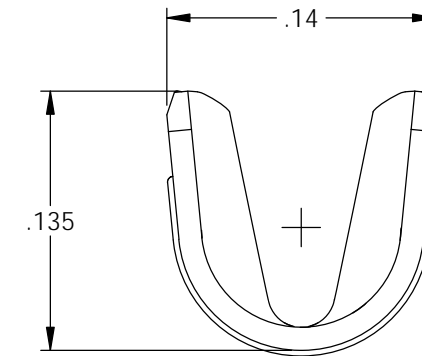
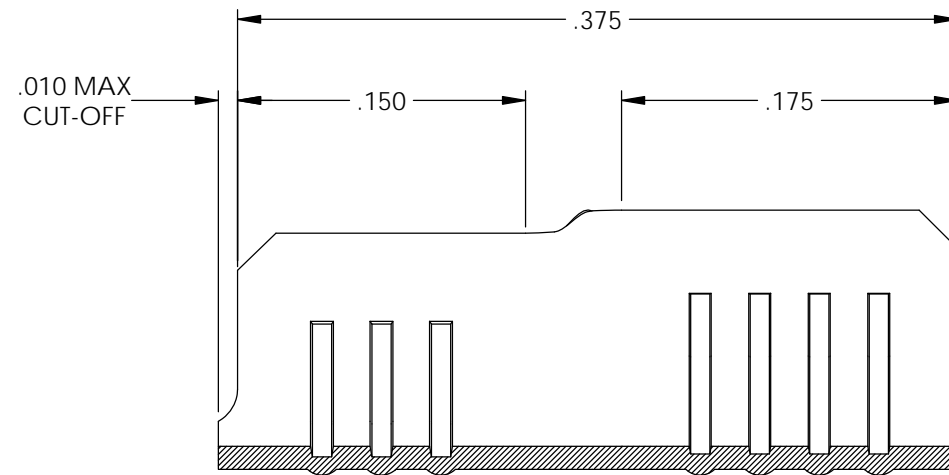
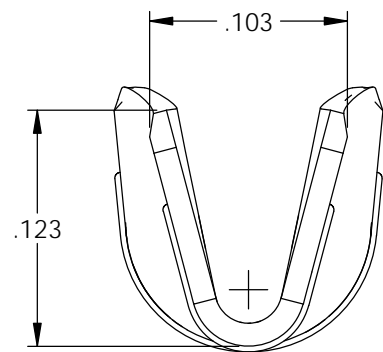
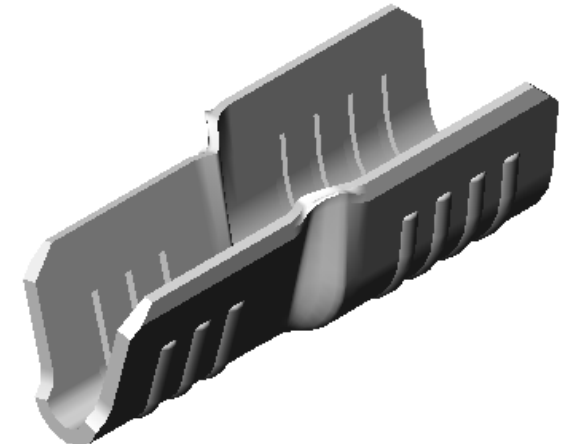
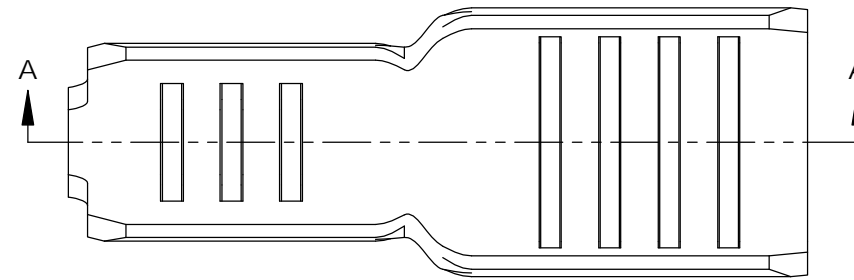


NOTES:

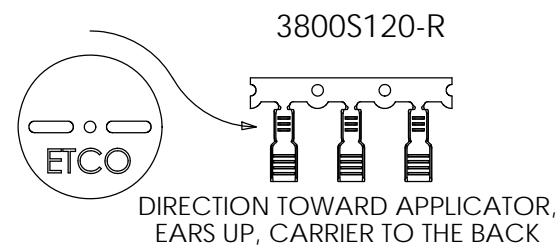
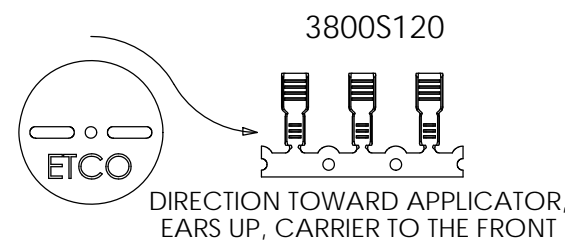
1. MATERIAL: .012 THICK, NICKEL PLATED 1008 STEEL #2 TEMPER (1/2 HARD), PER ETCO METAL CODE 2-3072.
2. MATERIAL: .012 THICK, 430 STAINLESS STEEL ANNEALED TO TEMPER, PER ETCO METAL CODE XXXXX.
3. PARTS MAY BE COATED WITH A LIGHT FILM OF LUBRICATION USED IN THE MANUFACTURING PROCESS.
4. WIRE RANGE: 18-22 AWG.
5. HEATER ELEMENT DIAMETER RANGE: ϕ .060- ϕ .070.

Part Number	Mat'l	Rewind
3800S 120	Note 1	No
3800S 120-R	Note 1	Yes
3800S 120T	Note 2	No
3800S 120T-R	Note 2	Yes

Rev.	Description of Change/ SCN#	Date
-	Approved For Mfg SCJ	3/13/20



SECTION A-A



UNCONTROLLED COPY

<p>THIRD ANGLE PROJECTION TOLERANCES UNLESS OTHERWISE SPECIFIED INCHES: .XX - \pm.030 .XXX - \pm.015 ANGLES: \pm5°</p>	<p>TOOL NO. 1021</p>	<p>Title: Heater Element Terminal</p>		
		<p>DO NOT SCALE DWG.</p>	<p>Drawn By: S.Johnson</p>	<p>Date: 2/24/20</p>
<p>ETCO Incorporated Engineered Products 25 Bellows Street Warwick, RI 02888 Phone: (401) 467-2400 Fax: (401) 467-9230 www.ETCO.com</p>		<p>Design Control By: ETCO</p>	<p>Scale: 10X</p>	<p>Size B</p>
		<p>Dwg. No.: 3800S 120 cust</p>		