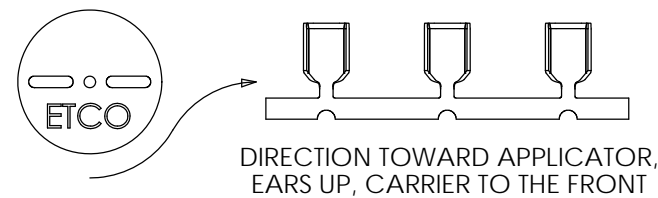
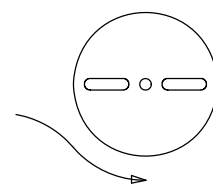
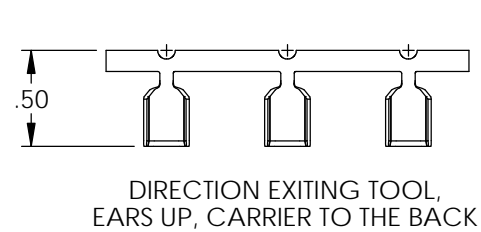
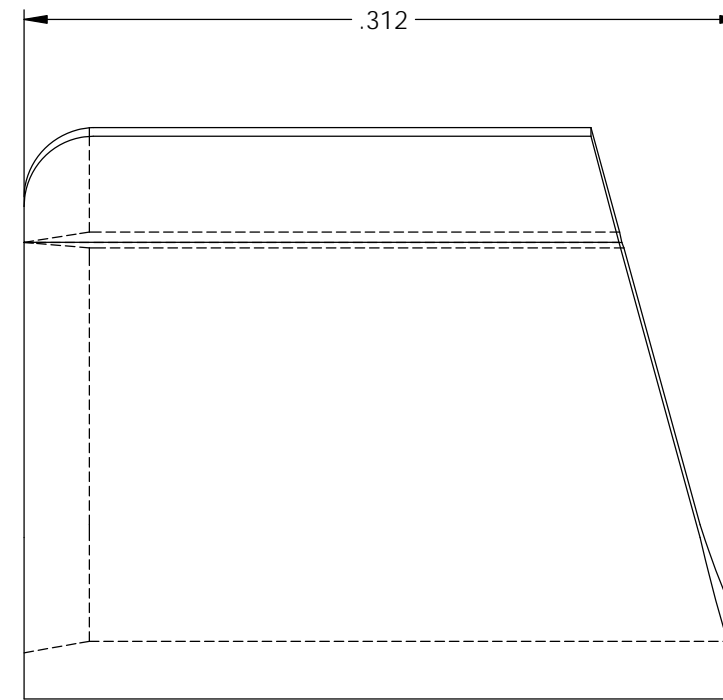
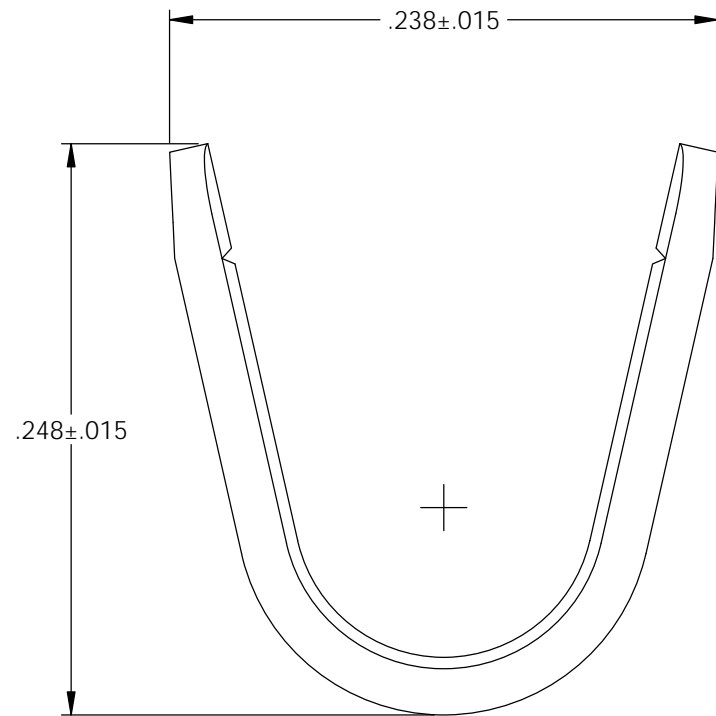
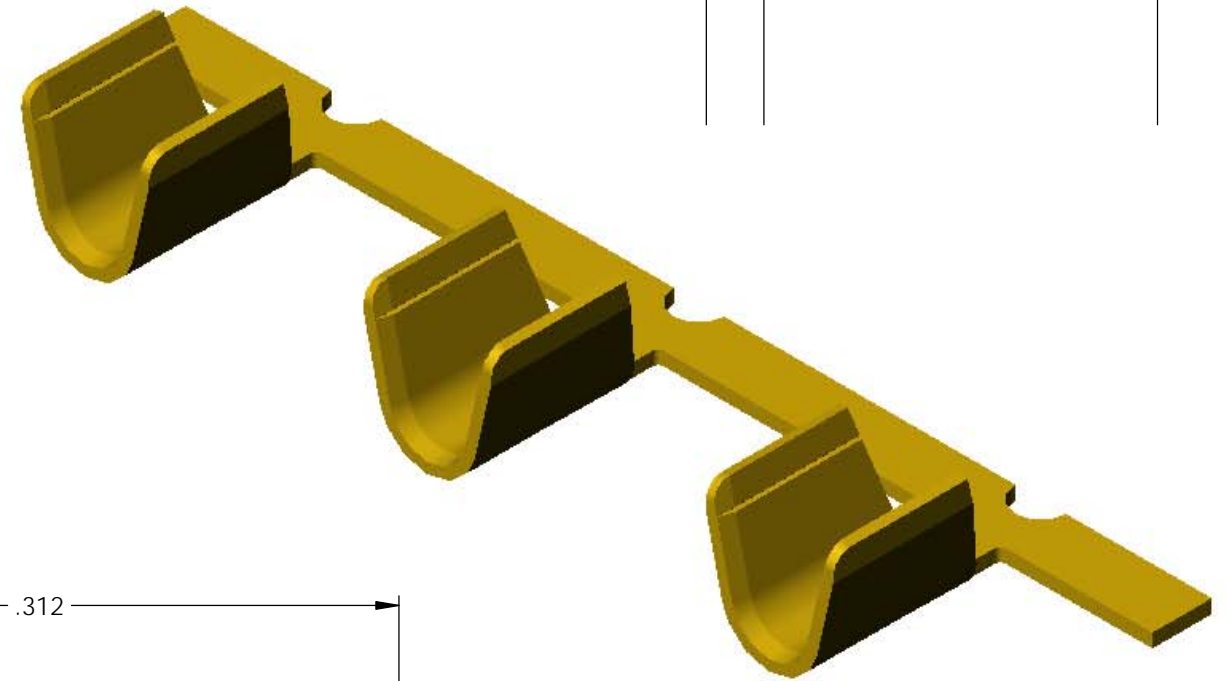


NOTES:

- MATERIAL: .025 THICK BRASS  
#2 TEMPER (1/2 HARD)  
PER ETCO METAL CODE 2-0282.
- PARTS MAY BE COATED WITH A LIGHT FILM OF LUBRICATION USED IN THE MANUFACTURING PROCESS.
- WIRE RANGE: 5200-13,000 CMA.

Part Number	Mat'l
3800S 175AB-5	Note 1

Rev.	Description of Change/ SCN#	Date
-	Approved For Mfg SCJ	2/11/20



THIS PRINT IS THE PROPERTY OF ETCO INCORPORATED. NO PART OF THIS DESIGN MAY BE USED IN ANY WAY WITHOUT WRITTEN CONSENT FROM ETCO INCORPORATED.

# UNCONTROLLED COPY

<p>THIRD ANGLE PROJECTION TOLERANCES UNLESS OTHERWISE SPECIFIED INCHES: .XX - ±.030 .XXX - ±.015 ANGLES: ±5°</p>	<p>TOOL NO.</p> <p><b>1015</b></p>	<p>Title:</p> <p><b>Splice</b></p>	
		<p>DO NOT SCALE DWG.</p> <p>ETCO Incorporated Engineered Products 25 Bellows Street Warwick, RI 02888 Phone: (401) 467-2400 Fax: (401) 467-9230 www.ETCO.com</p>	<p>Drawn By: S.Johnson</p> <p>Design Control By: ETCO</p> <p>Dwg. No.: <b>3800S 175-5 cust</b></p>