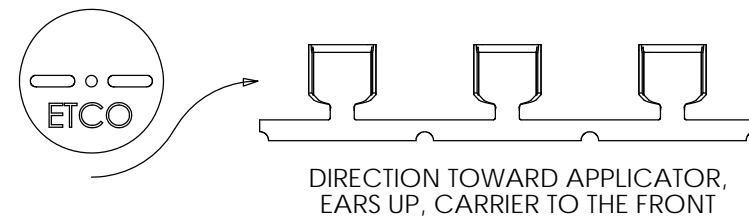
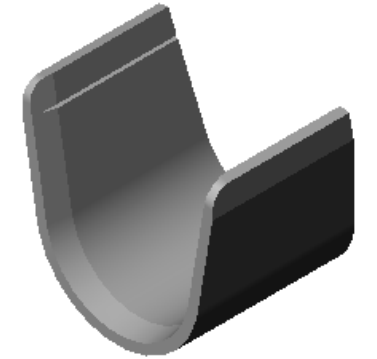
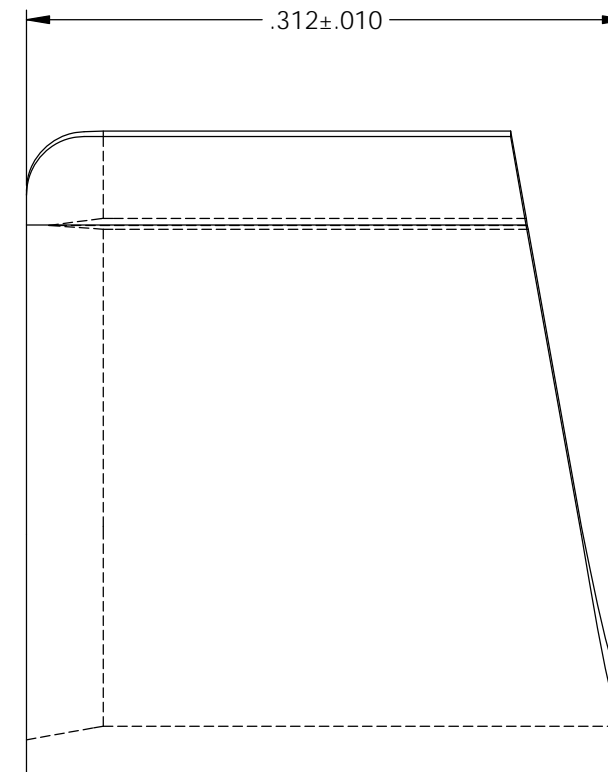
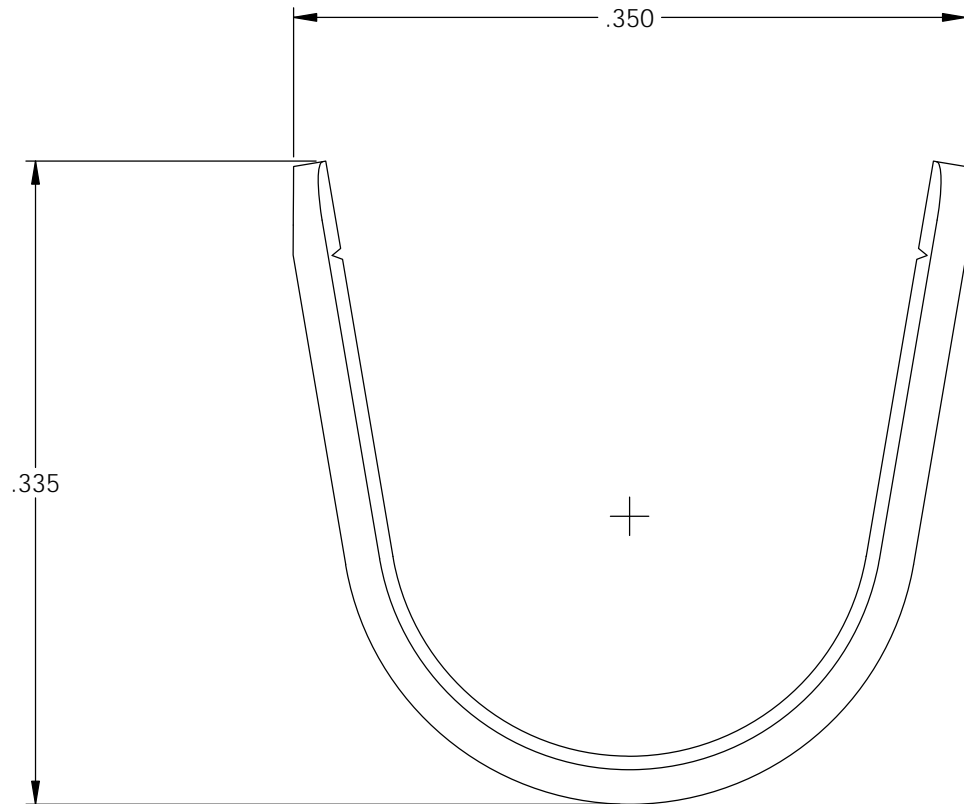


NOTES:

1. MATERIAL: .025 THICK BRASS
#2 TEMPER (1/2 HARD)
PER ETCO METAL CODE 2-0323.
2. MATERIAL: .025 THICK PRE-TINNED BRASS
#2 TEMPER (1/2 HARD)
PER ETCO METAL CODE 2-1631.
3. PARTS MAY BE COATED WITH A LIGHT FILM OF LUBRICATION USED IN THE MANUFACTURING PROCESS.
4. WIRE RANGE: 12,000-29,000 CMA.

Part Number	Mat'l
3800S 175A-6	Note 2
3800S 175AB-6	Note 1

Rev.	Description of Change/ SCN#	Date
-	Approved For Mfg SCJ	5/12/20



THIS PRINT IS THE PROPERTY OF ETCO INCORPORATED. NO PART OF THIS DESIGN MAY BE USED IN ANY WAY WITHOUT WRITTEN CONSENT FROM ETCO INCORPORATED.

UNCONTROLLED COPY

<p>THIRD ANGLE PROJECTION TOLERANCES UNLESS OTHERWISE SPECIFIED INCHES: .XX - ±.030 .XXX - ±.015 ANGLES: ±5°</p>	<p>TOOL NO. 1022</p>	<p>Title: Splice</p>		
		<p>DO NOT SCALE DWG.</p>	<p>Drawn By: S.Johnson</p>	<p>Date: 2/24/20</p>
<p>ETCO Incorporated Engineered Products 25 Bellows Street Warwick, RI 02888 Phone: (401) 467-2400 Fax: (401) 467-9230 www.ETCO.com</p>		<p>Design Control By: ETCO</p>	<p>Scale: 10X</p>	<p>Size B</p>
		<p>Dwg. No.: 3800S 175-6</p>		