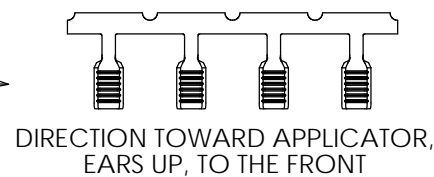
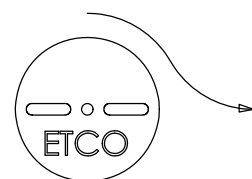
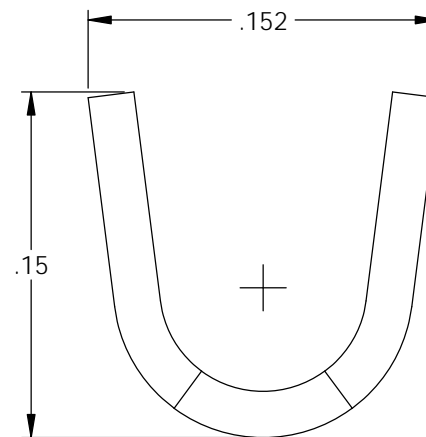
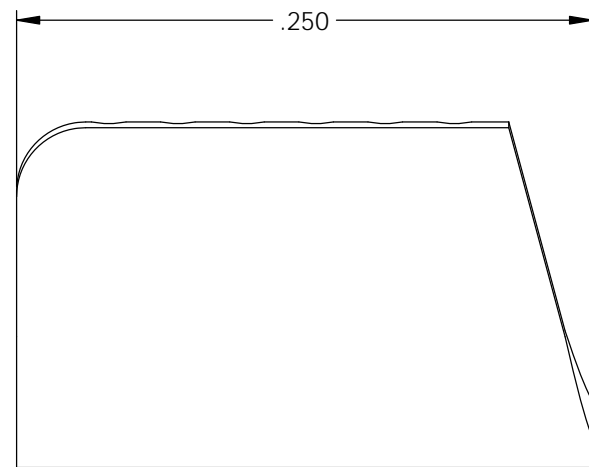
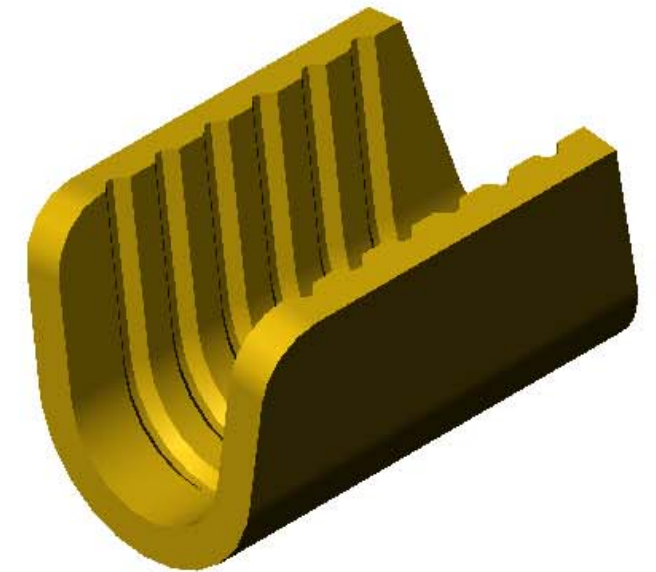
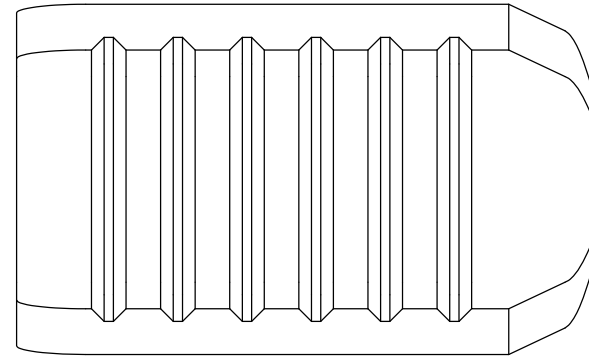


NOTES:

1. MATERIAL: .016 THICK BRASS
#3 TEMPER (3/4 HARD)
PER ETCO METAL CODE XXXXX.
2. MATERIAL: .016 THICK PRETINNED BRASS
#3 TEMPER (3/4 HARD)
PER ETCO METAL CODE XXXXX.
3. PARTS MAY BE COATED WITH A LIGHT FILM OF LUBRICATION USED IN THE MANUFACTURING PROCESS.
4. WIRE RANGE: 1600-5000 CMA.

Part Number	Mat'l
3800S 375A-3	Note 2
3800S 375AB-3	Note 1

Rev.	Description of Change/ SCN#	Date
A	Approved For Quote SCJ	6/02/20



THIS PRINT IS THE PROPERTY OF ETCO INCORPORATED. NO PART OF THIS DESIGN MAY BE USED IN ANY WAY WITHOUT WRITTEN CONSENT FROM ETCO INCORPORATED.

UNCONTROLLED COPY

<p>THIRD ANGLE PROJECTION TOLERANCES UNLESS OTHERWISE SPECIFIED INCHES: .XX - ±.030 .XXX - ±.015 ANGLES: ±5°</p>	<p>TOOL NO. 1029</p>	<p>Title: Splice</p>		
		<p>DO NOT SCALE DWG.</p>	<p>Drawn By: S.Johnson</p>	<p>Date: 6/02/20</p>
<p>ETCO Incorporated Engineered Products 25 Bellows Street Warwick, RI 02888 Phone: (401) 467-2400 Fax: (401) 467-9230 www.ETCO.com</p>		<p>Design Control By: ETCO</p>	<p>Scale: 12X</p>	<p>Size B</p>
		<p>Dwg. No.: 3800S 375-3 cust</p>		