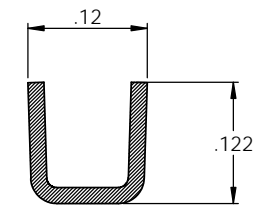
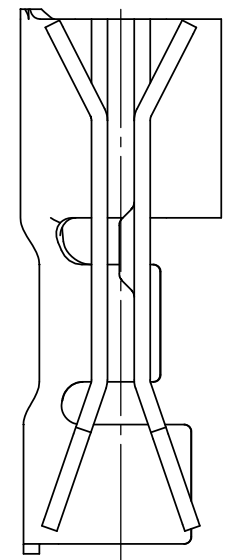
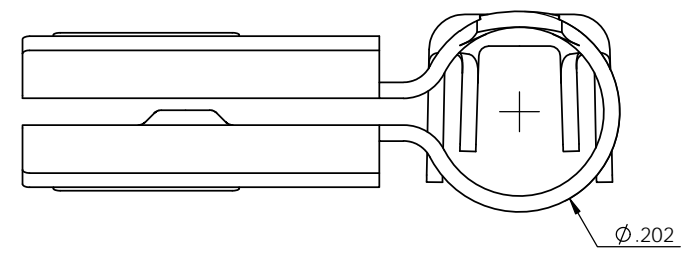


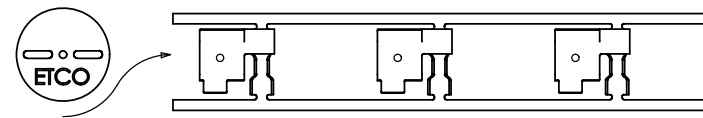
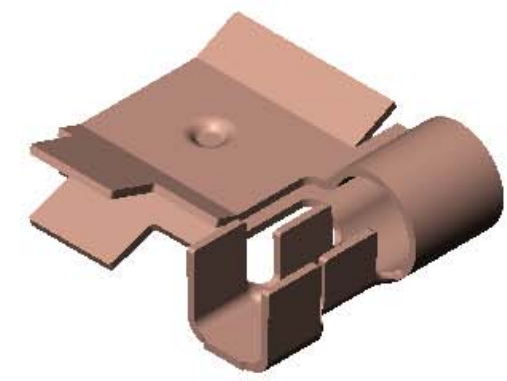
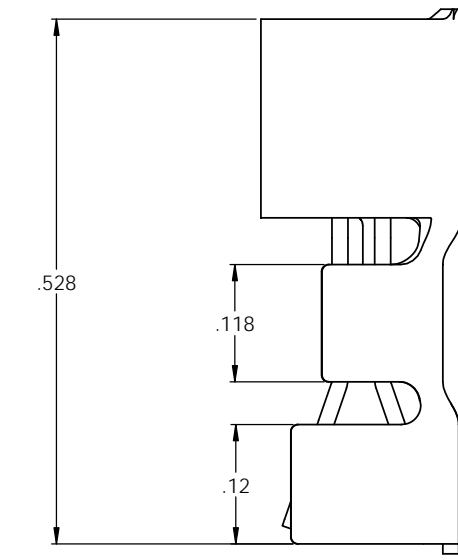
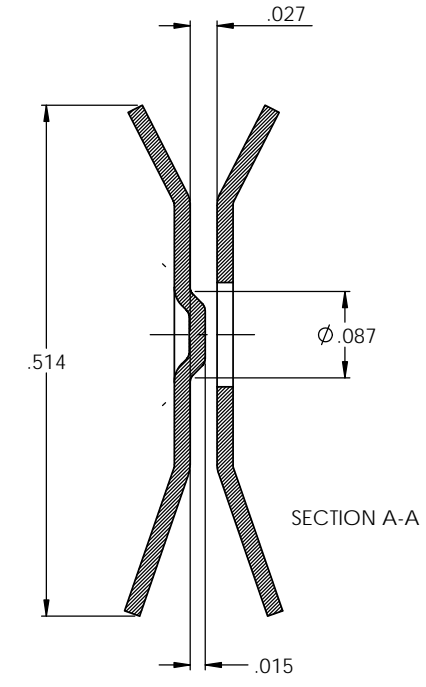
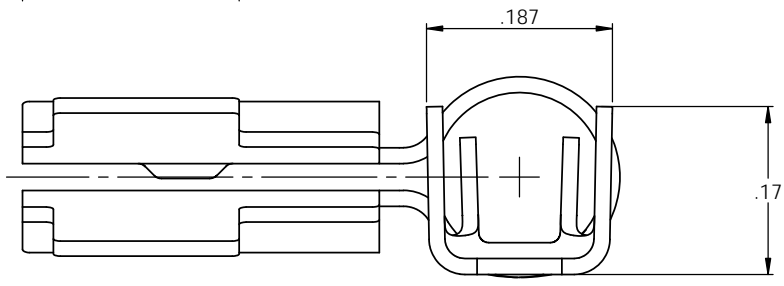
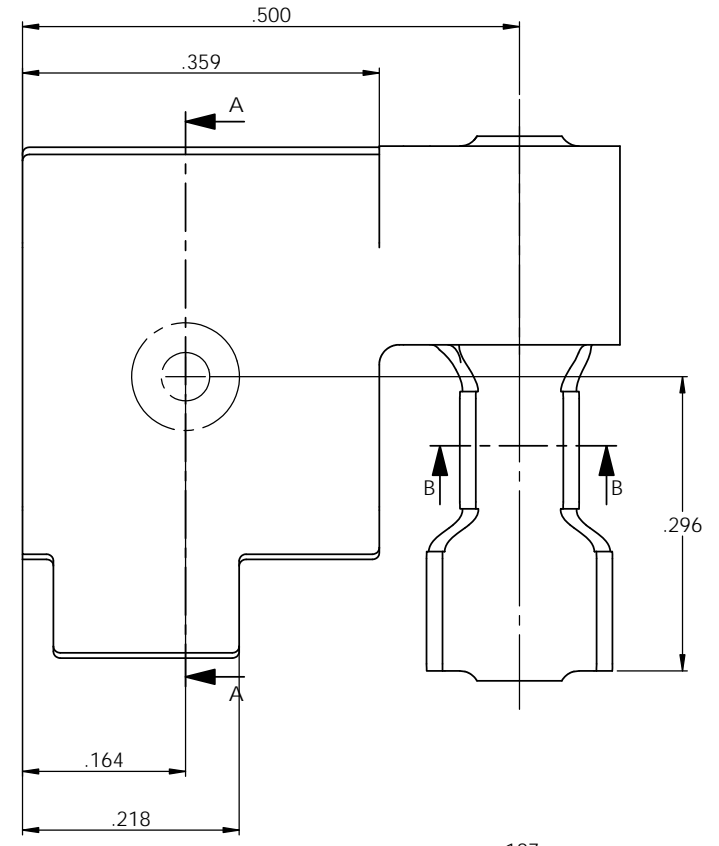
NOTES:

1. MATERIAL: .016 THICK PHOSPHOR BRONZE #2 TEMPER (HALF HARD) PER ETCO METAL CODE XXXXXX.
2. PARTS MAY BE COATED WITH A LIGHT FILM OF LUBRICATION USED IN THE MANUFACTURING PROCESS.
3. WIRE RANGE: 18-14 AWG.
4. INSULATION RANGE: ϕ .090- ϕ .120.

Rev.	Description of Change/ SCN#	Date
A	Approved For Quote SCJ	5/26/20



SECTION B-B



DIRECTION TOWARD APPLICATOR,
EARS UP, TO THE FRONT

THIS PRINT IS THE PROPERTY OF ETCO INCORPORATED. NO PART OF THIS DESIGN MAY BE USED IN ANY WAY WITHOUT WRITTEN CONSENT FROM ETCO INCORPORATED.

UNCONTROLLED COPY					
 THIRD ANGLE PROJECTION	TOOL NO. 1049	Title: Contact Terminal			
		DO NOT SCALE DWG.	Drawn By: S.Johnson	Date: 5/26/20	Scale: 10X
TOLERANCES UNLESS OTHERWISE SPECIFIED INCHES: .XX - \pm .030 .XXX - \pm .015 ANGLES: \pm 5°		ETCO Incorporated Engineered Products 25 Bellows Street Warwick, RI 02888 Phone: (401) 467-2400 Fax: (401) 467-9230 www.ETCO.com	Chk'd/App'd By: ETCO	Size C	Dwg. No.: 3800S 45 cust