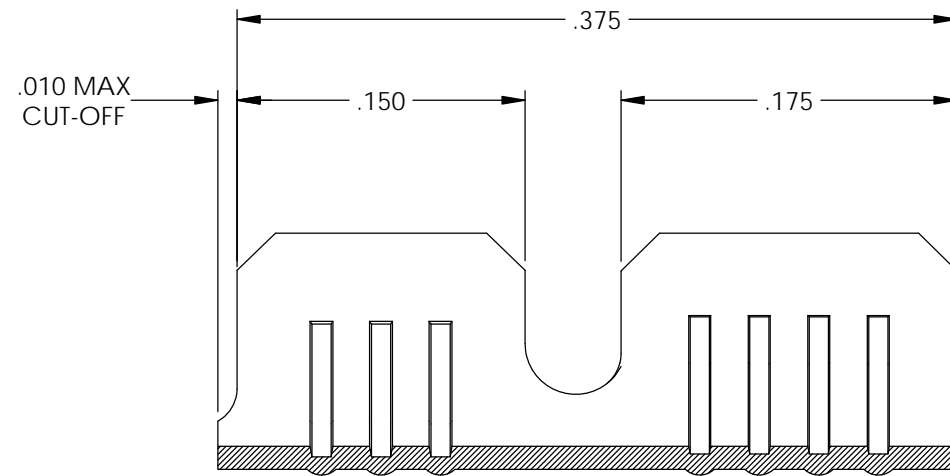
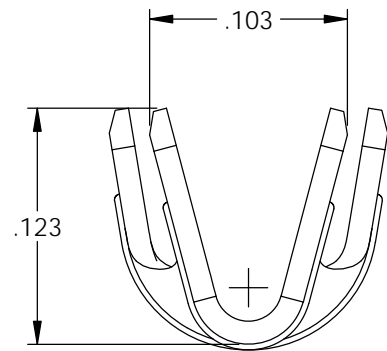
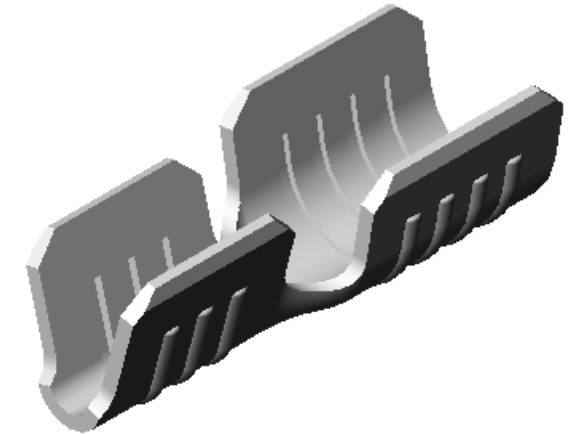
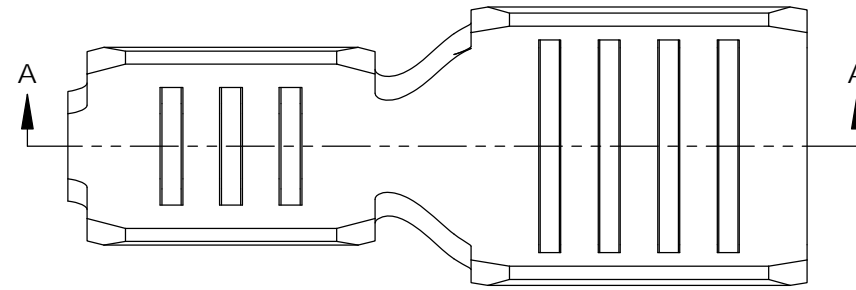


NOTES:

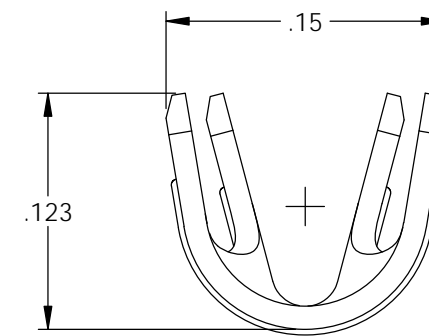
1. MATERIAL: .012 THICK, NICKEL PLATED 1008 STEEL  
#2 TEMPER (1/2 HARD),  
PER ETCO METAL CODE 2-3072.
2. MATERIAL: .012 THICK, 430 STAINLESS STEEL  
ANNEALED TO TEMPER,  
PER ETCO METAL CODE XXXXX.
3. PARTS MAY BE COATED WITH A LIGHT FILM OF  
LUBRICATION USED IN THE MANUFACTURING PROCESS.
4. WIRE RANGE: 18-22 AWG.
5. HEATER ELEMENT DIAMETER RANGE:  $\phi$ .060- $\phi$ .070.
6. PARTS ARE PRODUCED IN LOOSE PIECE FORM.

| Part Number | Mat'l  |
|-------------|--------|
| 3800S 81-1  | Note 1 |
| 3800S 81T-1 | Note 2 |

| Rev. | Description of Change/ SCN# | Date    |
|------|-----------------------------|---------|
| A    | Approved For Quote SCJ      | 7/28/20 |



SECTION A-A



# UNCONTROLLED COPY

|   |                                 |  |                            |                      |
|---|---------------------------------|--|----------------------------|----------------------|
| <p>THIRD ANGLE PROJECTION<br/>TOLERANCES UNLESS OTHERWISE SPECIFIED<br/>INCHES: .XX - <math>\pm</math>.030<br/>.XXX - <math>\pm</math>.015<br/>ANGLES: <math>\pm</math>5°</p> | <p>TOOL NO.<br/><b>1021</b></p> | <p>Title: <b>Heater Element Terminal</b></p> |                            |                      |
|   |                                 | <p>DO NOT SCALE DWG.</p>                     | <p>Drawn By: S.Johnson</p> | <p>Date: 7/28/20</p> |
| <p>ETCO Incorporated<br/>Engineered Products<br/>25 Bellows Street<br/>Warwick, RI 02888<br/>Phone: (401) 467-2400<br/>Fax: (401) 467-9230<br/>www.ETCO.com</p>               |                                 | <p>Design Control By:<br/>ETCO</p>           | <p>Scale:<br/>10X</p>      | <p>Size<br/>B</p>    |
|   |                                 | <p>Dwg. No.: <b>3800S 81-1 cust</b></p>      |                            |                      |