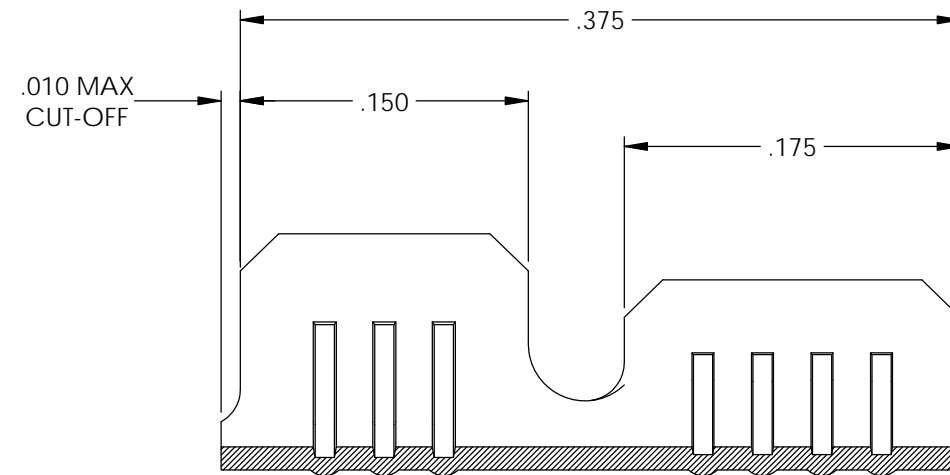
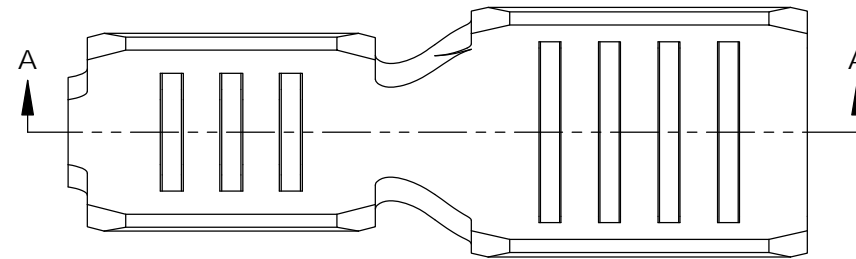
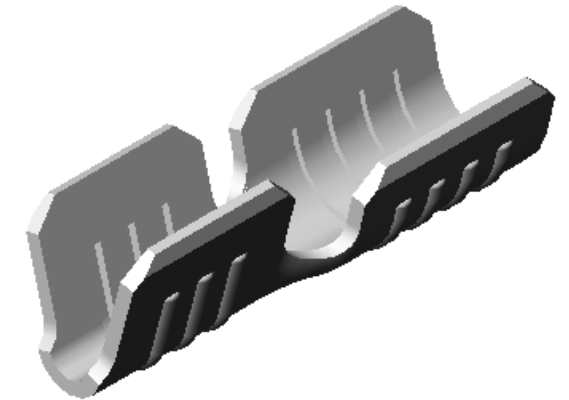


NOTES:

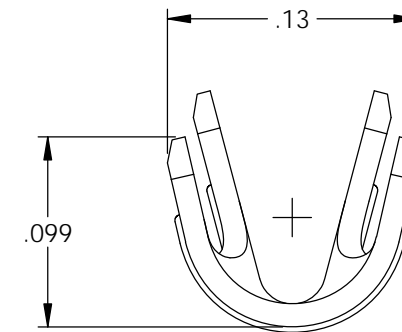
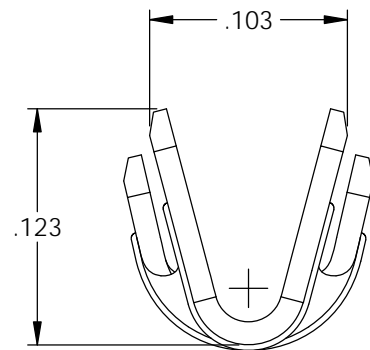
1. MATERIAL: .012 THICK, NICKEL PLATED 1008 STEEL #2 TEMPER (1/2 HARD), PER ETCO METAL CODE 2-3072.
2. MATERIAL: .012 THICK, 430 STAINLESS STEEL ANNEALED TO TEMPER, PER ETCO METAL CODE XXXXX.
3. PARTS MAY BE COATED WITH A LIGHT FILM OF LUBRICATION USED IN THE MANUFACTURING PROCESS.
4. WIRE RANGE: 18-22 AWG.
5. HEATER ELEMENT DIAMETER RANGE:  $\phi$ .050- $\phi$ .060.
6. PART ARE PRODUCED IN LOOSE PIECE FORM.

Rev.	Description of Change/ SCN#	Date
A	Approved For Quote SCJ	7/28/20

Part Number	Mat'l
3800S 93-1	Note 1
3800S 93T-1	Note 2



SECTION A-A



# UNCONTROLLED COPY

<p>THIRD ANGLE PROJECTION TOLERANCES UNLESS OTHERWISE SPECIFIED INCHES: .XX - <math>\pm</math>.030 .XXX - <math>\pm</math>.015 ANGLES: <math>\pm</math>5°</p>	<p>TOOL NO. <b>1021</b></p>	<p>Title: <b>Heater Element Terminal</b></p>		
		<p>DO NOT SCALE DWG.</p>	<p>Drawn By: <b>S.Johnson</b></p>	<p>Date: <b>7/28/20</b></p>
<p>ETCO Incorporated Engineered Products 25 Bellows Street Warwick, RI 02888 Phone: (401) 467-2400 Fax: (401) 467-9230 www.ETCO.com</p>		<p>Design Control By: <b>ETCO</b></p>	<p>Scale: <b>10X</b></p>	<p>Size <b>B</b></p>
		<p>Dwg. No.: <b>3800S 93-1 cust</b></p>		