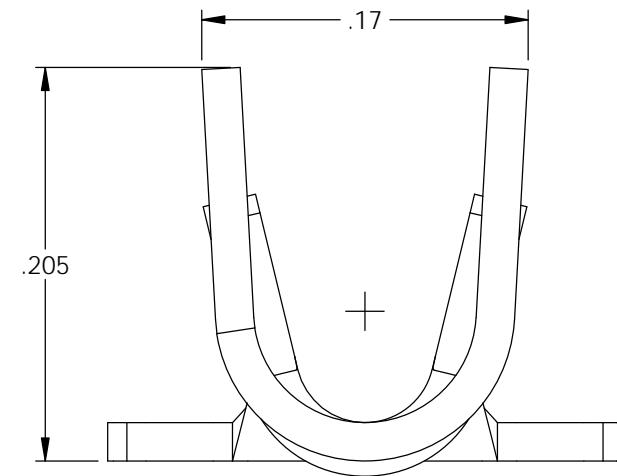
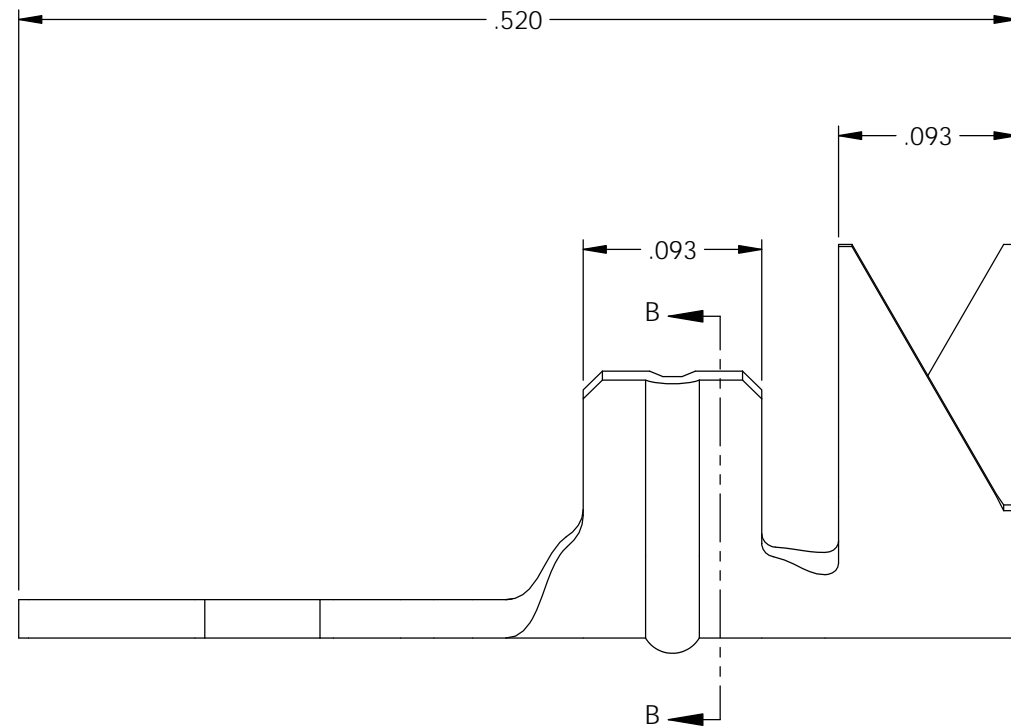
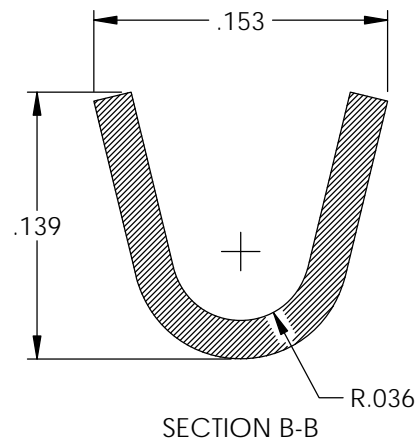
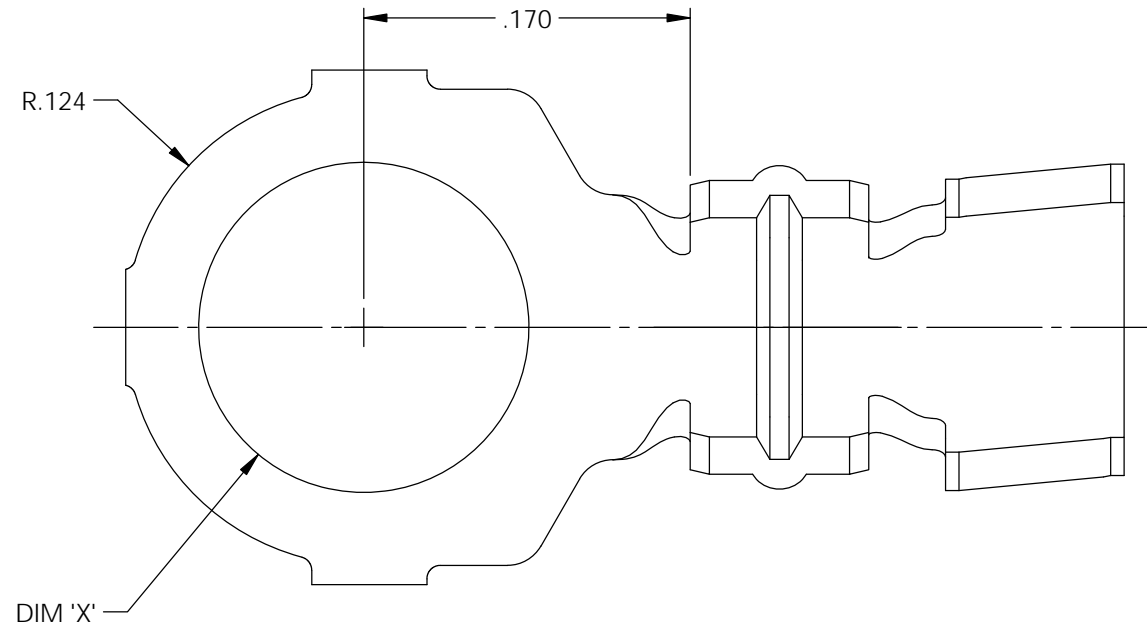


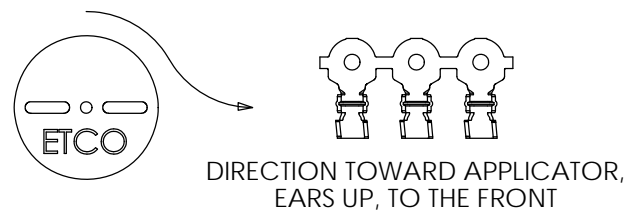
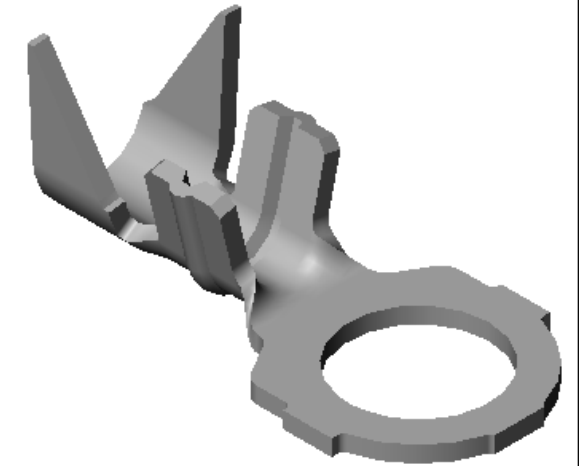
NOTES:

1. MATERIAL: .020 THICK BRASS
#2 TEMPER (1/2 HARD)
PER ETCO METAL CODE XXXXX.
2. MATERIAL: .020 THICK PRETINNED BRASS
#2 TEMPER (1/2 HARD)
PER ETCO METAL CODE XXXXX.
3. PARTS MAY BE COATED WITH A LIGHT FILM OF LUBRICATION USED IN THE MANUFACTURING PROCESS.
4. WIRE RANGE: 16-22 AWG.
5. INSULATION DIAMETER RANGE: ϕ .075- ϕ .125.



Part Number	DIM 'X'	Mat'l	UL
4000 2G1-00	.068	Note 1	X
4000 2G2-00	.068	Note 2	X
4000 2G1-2	.094	Note 1	X
4000 2G2-2	.094	Note 2	X
4000 2G1-4	.120	Note 1	X
4000 2G2-4	.120	Note 2	X
4000 2G1-6	.146	Note 1	X
4000 2G2-6	.146	Note 2	X
4000 2G1-8	.172	Note 1	X
4000 2G2-8	.172	Note 2	X

Rev.	Description of Change/ SCN#	Date
A	Approved For Quote SCJ	4/07/20



UNCONTROLLED COPY

<p>THIRD ANGLE PROJECTION TOLERANCES UNLESS OTHERWISE SPECIFIED INCHES: .XX - \pm.030 .XXX - \pm.015 ANGLES: \pm5°</p>	TOOL NO. 1028	Title: Ring Terminal	
		DO NOT SCALE DWG.	Drawn By: S.Johnson Design Control By: ETCO Date: 3/04/20 Scale: 10X Size: B
		Dwg. No.: 4000 2G -00,-2,-4,-6,-8 cust	

ETCO Incorporated
Engineered Products
25 Bellows Street
Warwick, RI 02888
Phone: (401) 467-2400
Fax: (401) 467-9230
www.ETCO.com