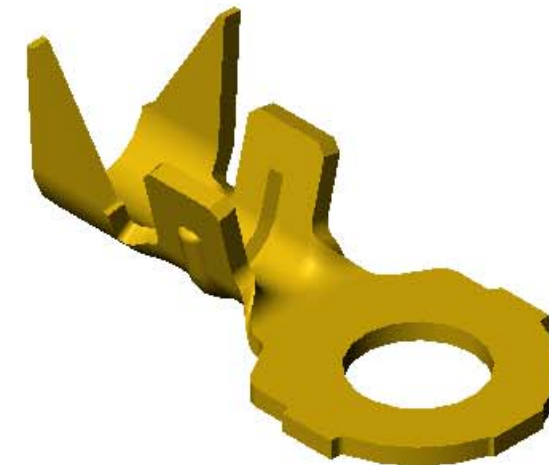
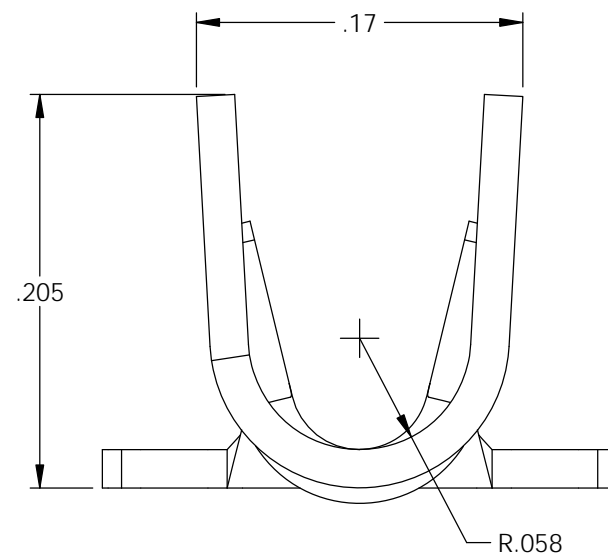
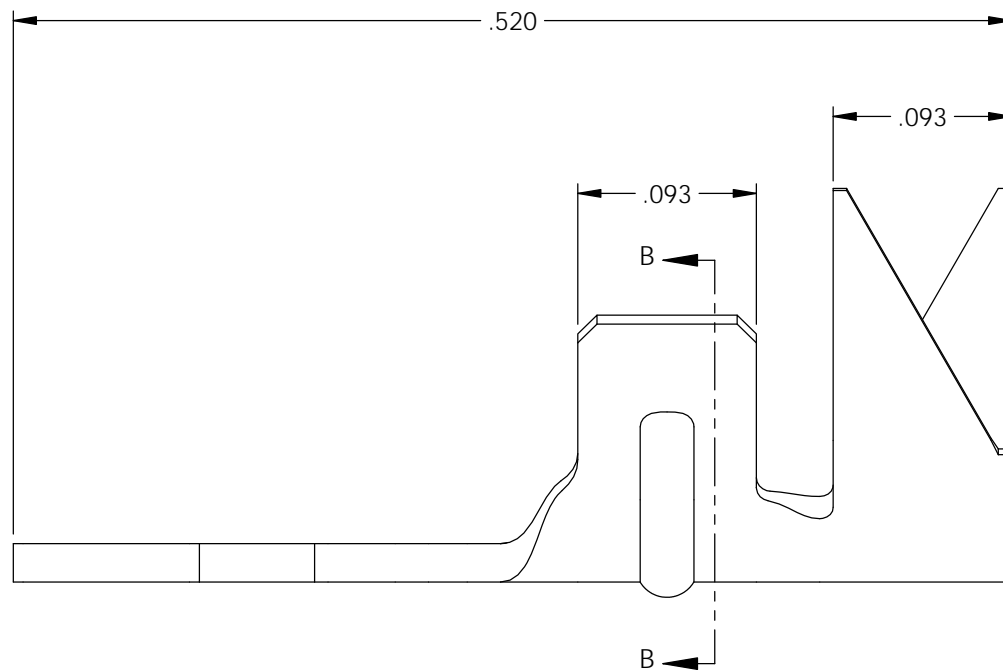
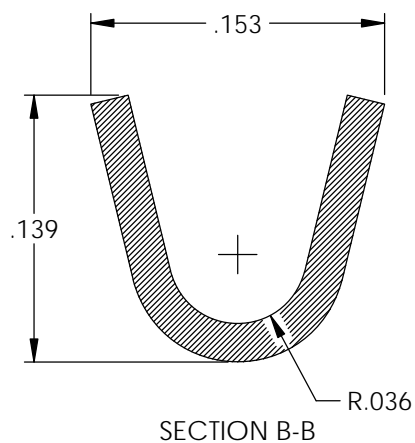
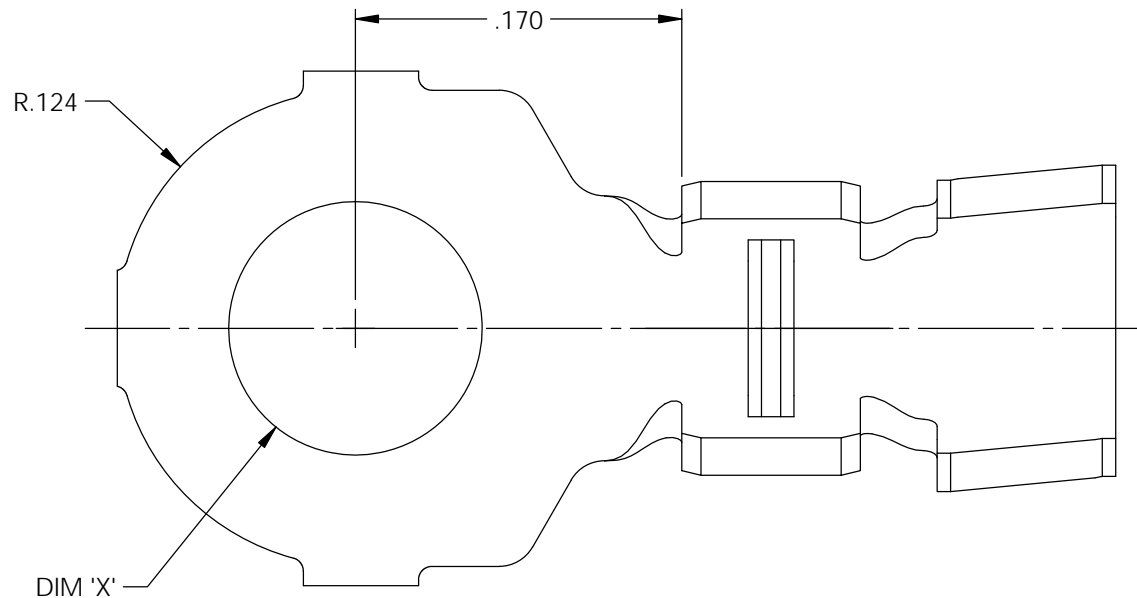


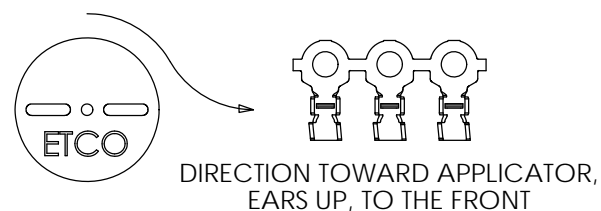
NOTES:

- MATERIAL: .020 THICK BRASS
#2 TEMPER (1/2 HARD)
PER ETCO METAL CODE XXXXX.
- MATERIAL: .020 THICK PRETINNED BRASS
#2 TEMPER (1/2 HARD)
PER ETCO METAL CODE XXXXX.
- PARTS MAY BE COATED WITH A LIGHT FILM OF LUBRICATION USED IN THE MANUFACTURING PROCESS.
- WIRE RANGE: 16-22 AWG.
- INSULATION DIAMETER RANGE: ϕ .075- ϕ .125.



Part Number	DIM 'X'	Mat'l	UL
4000 2G1-2A	.082	Note 1	
4000 2G2-2A	.082	Note 2	
4000 2G1-4A	.101	Note 1	X
4000 2G2-4A	.101	Note 2	X
4000 2G1-6A	.132	Note 1	X
4000 2G2-6A	.132	Note 2	X

Rev.	Description of Change/ SCN#	Date
A	Approved For Quote SCJ	3/04/20



UNCONTROLLED COPY

<p>THIRD ANGLE PROJECTION TOLERANCES UNLESS OTHERWISE SPECIFIED INCHES: .XX - \pm.030 .XXX - \pm.015 ANGLES: \pm5°</p>	<p>TOOL NO. 1028</p>	<p>Title: Ring Terminal</p>		
		<p>DO NOT SCALE DWG.</p>	<p>Drawn By: S.Johnson</p>	<p>Date: 3/04/20</p>
<p>ETCO Incorporated Engineered Products 25 Bellows Street Warwick, RI 02888 Phone: (401) 467-2400 Fax: (401) 467-9230 www.ETCO.com</p>		<p>Design Control By: ETCO</p>	<p>Scale: 10X</p>	<p>Size: B</p>
		<p>Dwg. No.: 4000 2G -2A, -4A, -6A cust</p>		