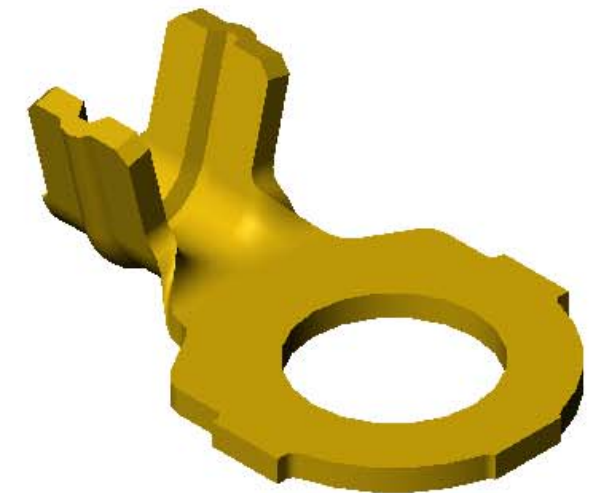
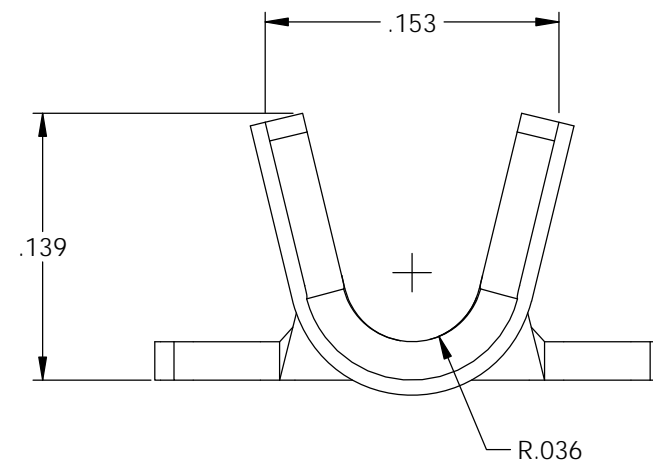
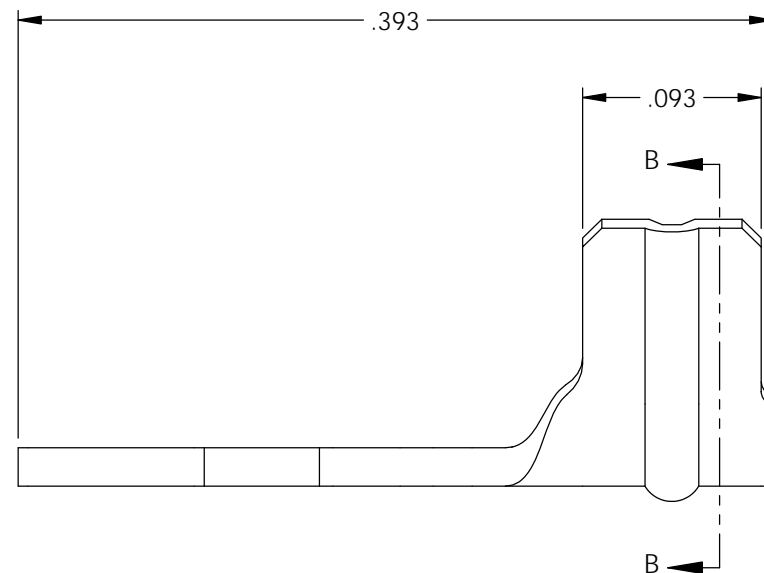
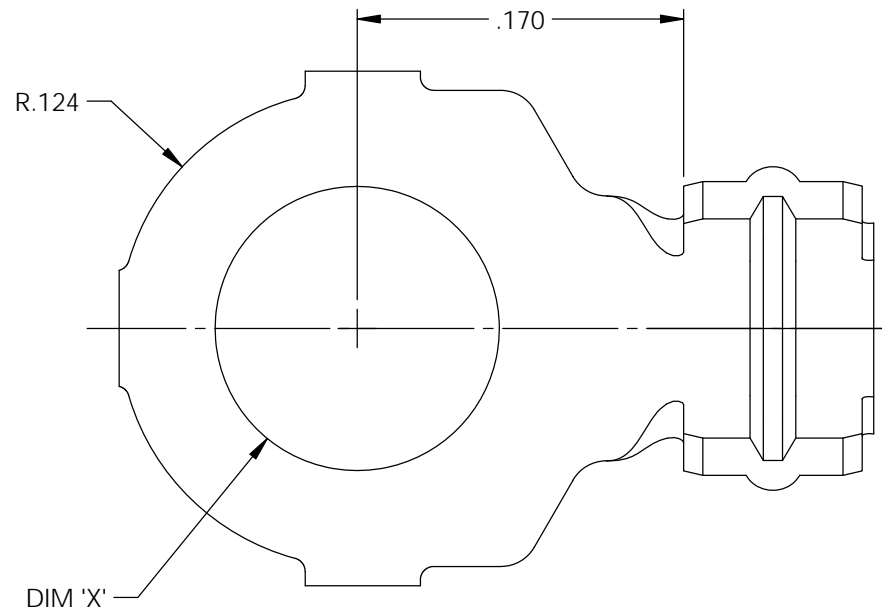


NOTES:

- MATERIAL: .020 THICK BRASS
#2 TEMPER (1/2 HARD)
PER ETCO METAL CODE XXXXX.
- MATERIAL: .020 THICK PRETINNED BRASS
#2 TEMPER (1/2 HARD)
PER ETCO METAL CODE XXXXX.
- PARTS MAY BE COATED WITH A LIGHT FILM OF LUBRICATION USED IN THE MANUFACTURING PROCESS.
- WIRE RANGE: 16-22 AWG.



Part Number	DIM 'X'	Mat'l	
4000 2G1-0	.068	Note 1	X
4000 2G2-0	.068	Note 2	X
4000 2G1-1	.094	Note 1	X
4000 2G2-1	.094	Note 2	X
4000 2G1-3	.120	Note 1	X
4000 2G2-3	.120	Note 2	X
4000 2G1-5	.146	Note 1	X
4000 2G2-5	.146	Note 2	X
4000 2G1-7	.172	Note 1	X
4000 2G2-7	.172	Note 2	X

Rev.	Description of Change/ SCN#	Date
A	Approved For Quote SCJ	4/07/20



UNCONTROLLED COPY

 THIRD ANGLE PROJECTION TOLERANCES UNLESS OTHERWISE SPECIFIED INCHES: .XX - ±.030 .XXX - ±.015 ANGLES: ±5°	TOOL NO. 1028	Title: Ring Terminal	
		DO NOT SCALE DWG. ETCO Incorporated Engineered Products 25 Bellows Street Warwick, RI 02888 Phone: (401) 467-2400 Fax: (401) 467-9230 www.ETCO.com	Drawn By: S.Johnson Date: 4/07/20 Design Control By: ETCO Scale: 10X Size B Dwg. No.: 4000 2G -0,-1,-3,-5,-7 cust