
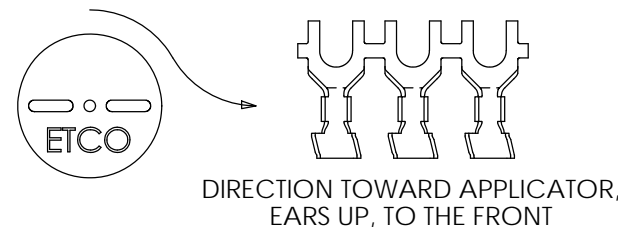
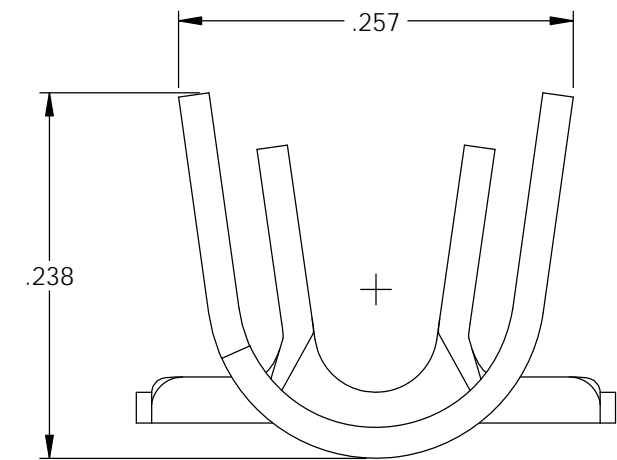
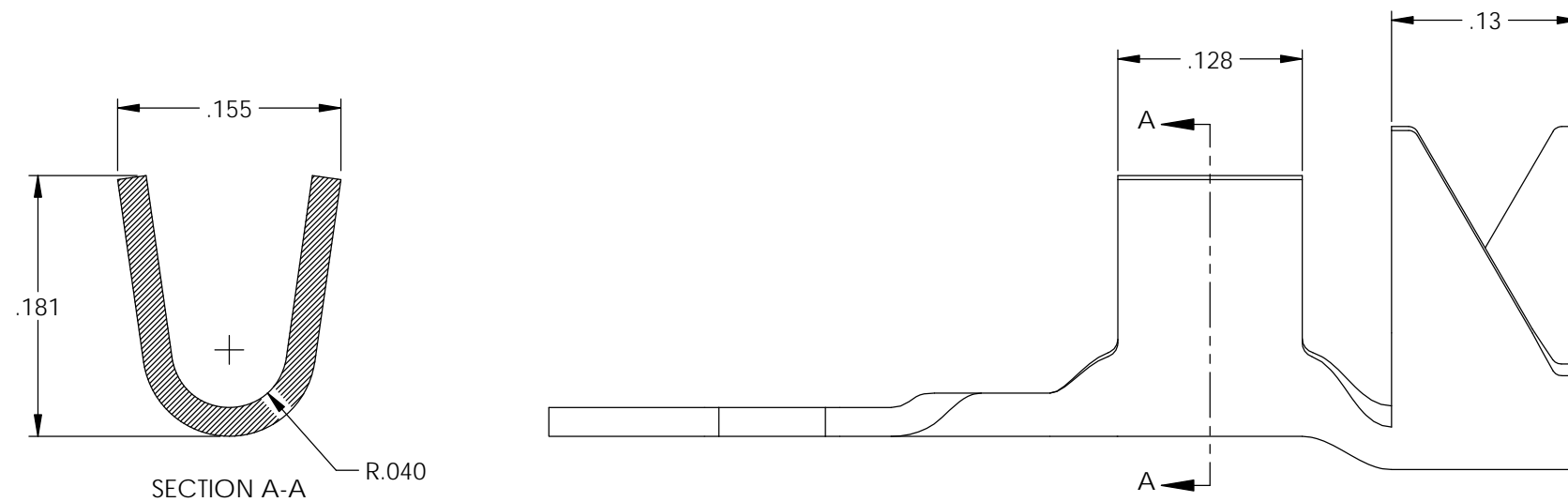
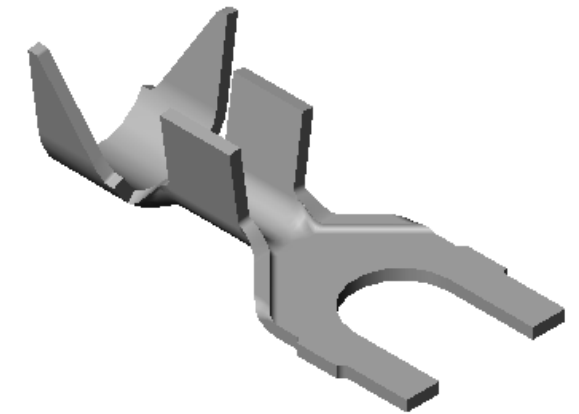
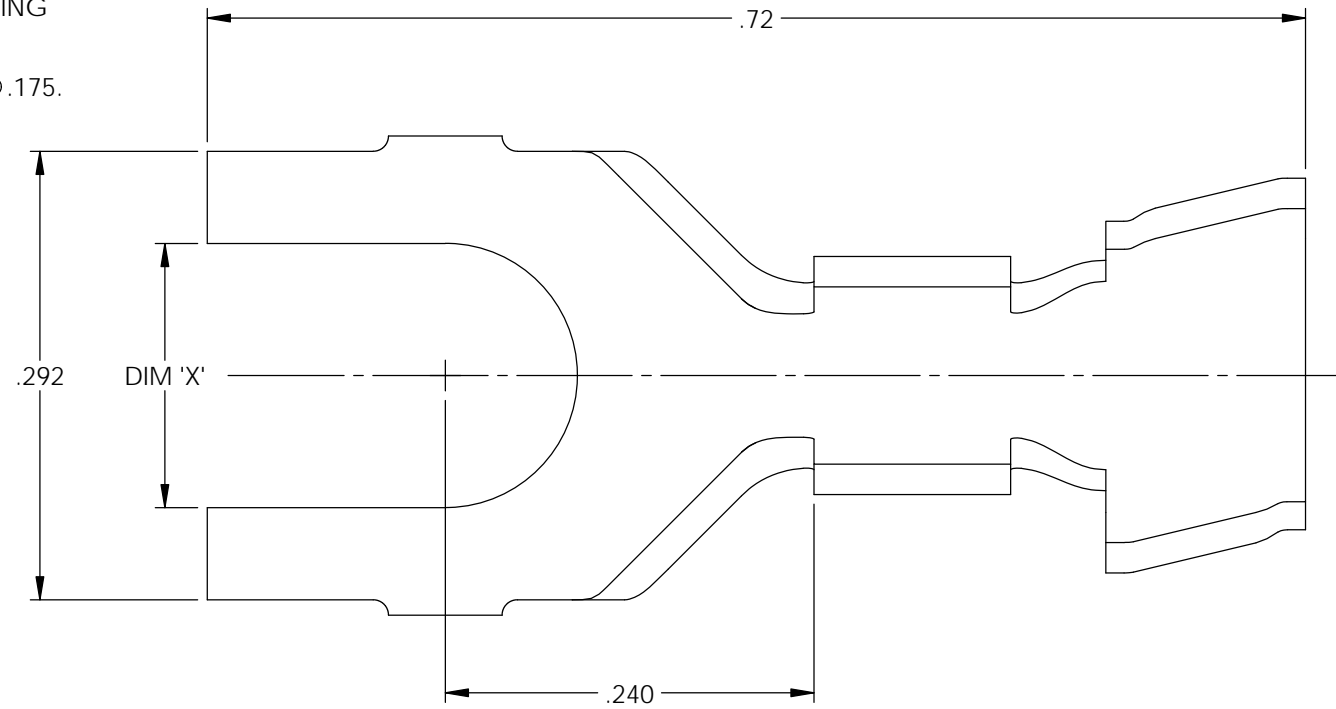


NOTES:

- MATERIAL: .020 THICK BRASS
#2 TEMPER (1/2 HARD)
PER ETCO METAL CODE XXXXX.
- MATERIAL: .020 THICK PRETINNED BRASS
#2 TEMPER (1/2 HARD)
PER ETCO METAL CODE 2-1451.
- MATERIAL: .020 THICK NICKEL PLATED STEEL
#3 TEMPER (1/4 HARD)
PER ETCO METAL CODE XXXXX.
- PARTS MAY BE COATED WITH A LIGHT FILM OF LUBRICATION USED IN THE MANUFACTURING PROCESS.
- WIRE RANGE: 14-20 AWG.
- INSULATION DIAMETER RANGE: ϕ .075- ϕ .175.

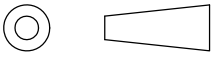

| Part Number | Dim 'X' | Mat'l |  |
|-------------|-------------|--------|--|
| 4000-3A1-4 | ϕ .120 | Note 1 | X |
| 4000-3A2-4 | ϕ .120 | Note 2 | X |
| 4000-3A1-6 | ϕ .148 | Note 1 | X |
| 4000-3A2-6 | ϕ .148 | Note 2 | X |
| 4000-3A1-8 | ϕ .172 | Note 1 | X |
| 4000-3A2-8 | ϕ .172 | Note 2 | X |
| 4000-3A11-8 | ϕ .172 | Note 3 | |
| 4000-3A1-10 | ϕ .198 | Note 1 | X |
| 4000-3A2-10 | ϕ .198 | Note 2 | X |

| Rev. | Description of Change/ SCN# | Date |
|------|-----------------------------|---------|
| A | Approved For Quote SCJ | 5/28/20 |



THIS PRINT IS THE PROPERTY OF ETCO INCORPORATED. NO PART OF THIS DESIGN MAY BE USED IN ANY WAY WITHOUT WRITTEN CONSENT FROM ETCO INCORPORATED.

UNCONTROLLED COPY

| | | | | |
|---|---|--|----------------------------|----------------------|
|  THIRD ANGLE PROJECTION TOLERANCES UNLESS OTHERWISE SPECIFIED INCHES: .XX - \pm .030 .XXX - \pm .015 ANGLES: \pm 5° | TOOL NO. 1023 | Title: Spade Terminal | | |
| |  | DO NOT SCALE DWG. | Drawn By: S.Johnson | Date: 5/28/20 |
| ETCO Incorporated Engineered Products 25 Bellows Street Warwick, RI 02888 Phone: (401) 467-2400 Fax: (401) 467-9230 www.ETCO.com | | Design Control By: ETCO | Scale: 8X | Size B |
| | | Dwg. No.: 4000 3A1,2 -4,-6,-8,-10 cust | | |