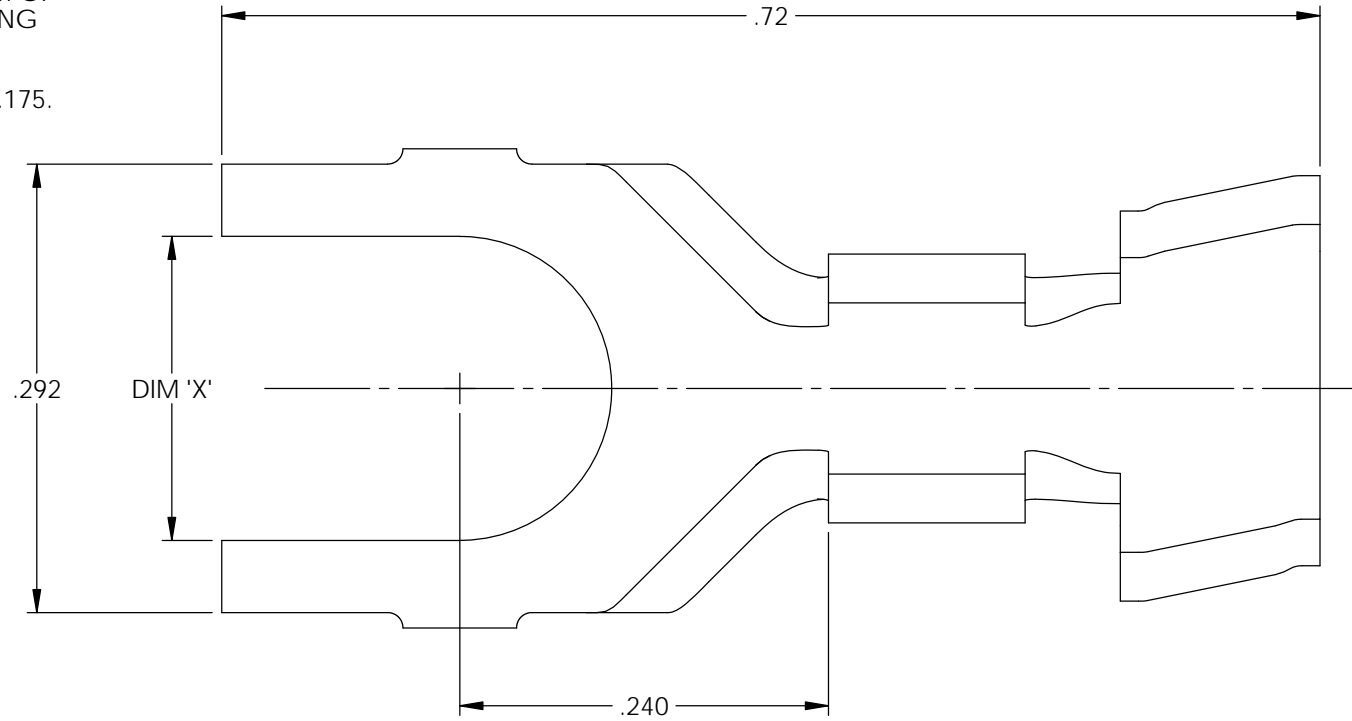


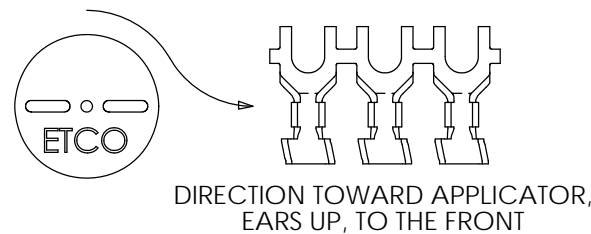
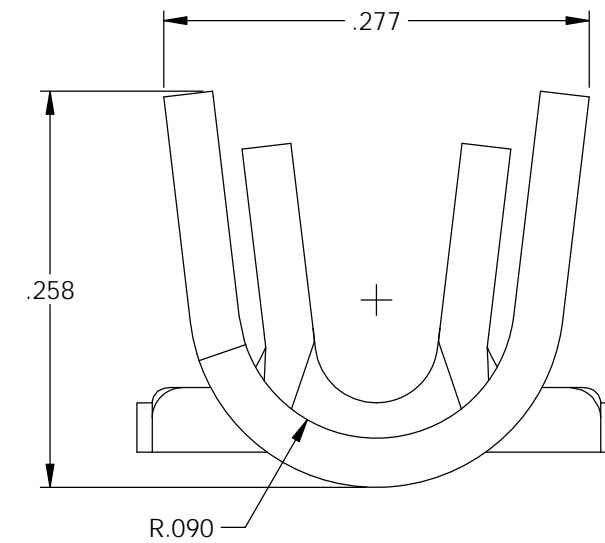
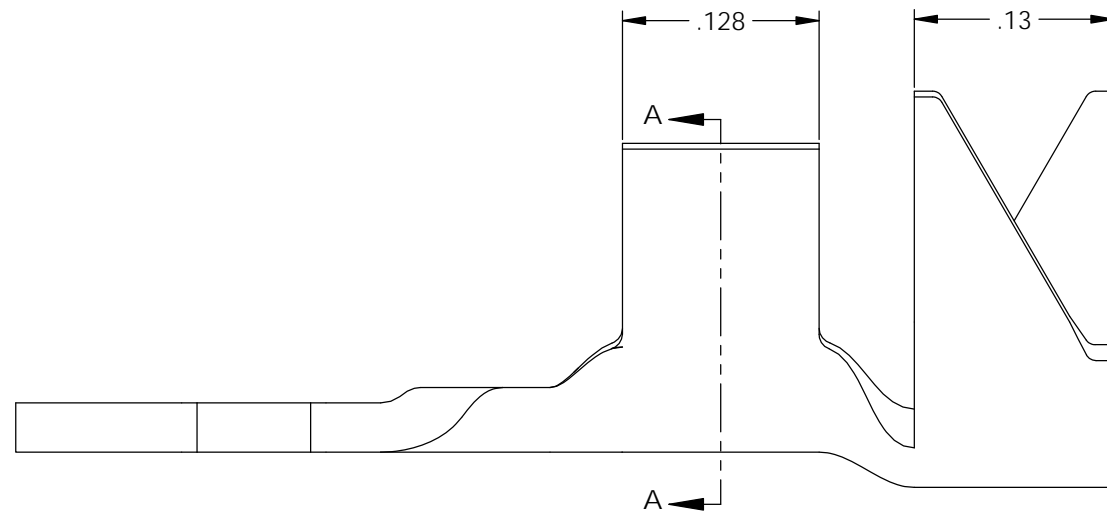
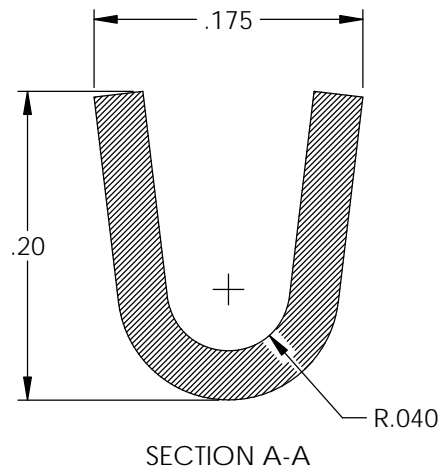
NOTES:

- MATERIAL: .032 THICK BRASS
#2 TEMPER (1/2 HARD)
PER ETCO METAL CODE XXXXX.
- MATERIAL: .032 THICK PRETINNED BRASS
#2 TEMPER (1/2 HARD)
PER ETCO METAL CODE XXXXX.
- PARTS MAY BE COATED WITH A LIGHT FILM OF LUBRICATION USED IN THE MANUFACTURING PROCESS.
- WIRE RANGE: 14-20 AWG.
- INSULATION DIAMETER RANGE: ϕ .075- ϕ .175.



Part Number	Dim 'X'	Mat'l	
4000-3A3-4	ϕ .120	Note 1	X
4000-3A4-4	ϕ .120	Note 2	X
4000-3A3-6	ϕ .148	Note 1	X
4000-3A4-6	ϕ .148	Note 2	X
4000-3A3-8	ϕ .172	Note 1	X
4000-3A4-8	ϕ .172	Note 2	X
4000-3A3-10	ϕ .198	Note 1	X
4000-3A4-10	ϕ .198	Note 2	X

Rev.	Description of Change/ SCN#	Date
A	Approved For Quote SCJ	5/28/20



THIS PRINT IS THE PROPERTY OF ETCO INCORPORATED. NO PART OF THIS DESIGN MAY BE USED IN ANY WAY WITHOUT WRITTEN CONSENT FROM ETCO INCORPORATED.

UNCONTROLLED COPY

 THIRD ANGLE PROJECTION TOLERANCES UNLESS OTHERWISE SPECIFIED INCHES: .XX - \pm .030 .XXX - \pm .015 ANGLES: \pm 5°	TOOL NO. 1023	Title: Spade Terminal		
		DO NOT SCALE DWG. ETCO Incorporated Engineered Products 25 Bellows Street Warwick, RI 02888 Phone: (401) 467-2400 Fax: (401) 467-9230 www.ETCO.com	Drawn By: S.Johnson Design Control By: ETCO	Date: 5/29/20 Scale: 8X Size: B
		Dwg. No.: 4000 3A3,4 -4,-6,-8,-10 cust		