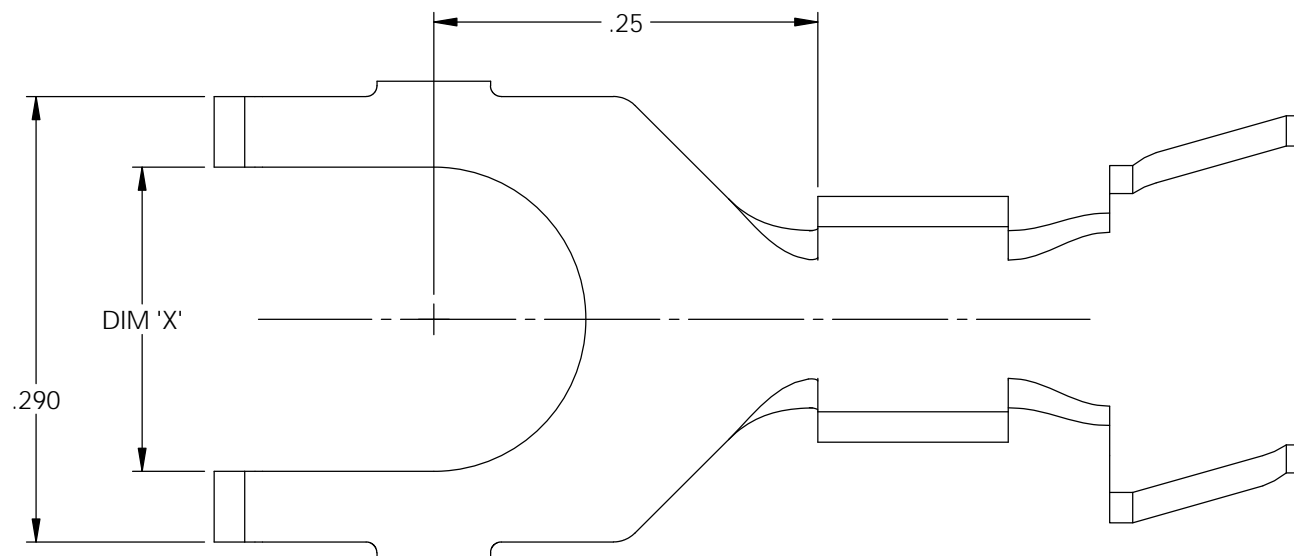


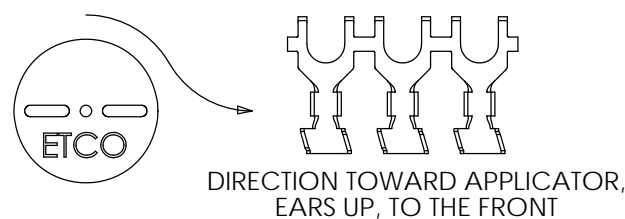
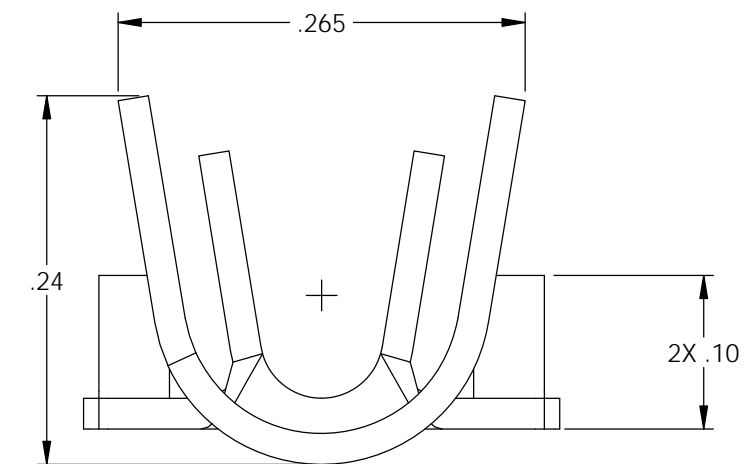
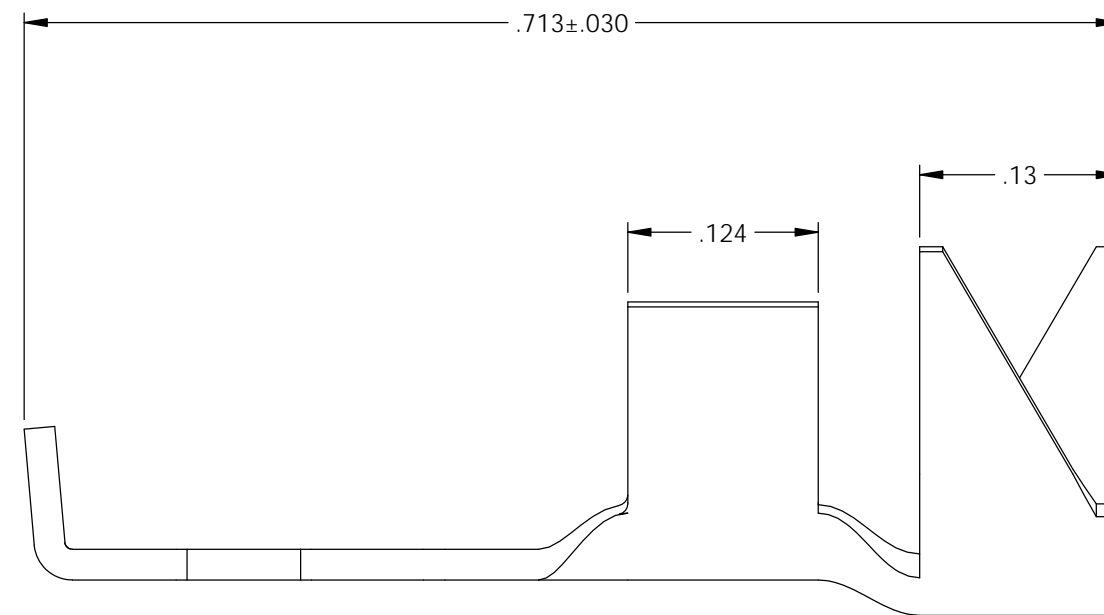
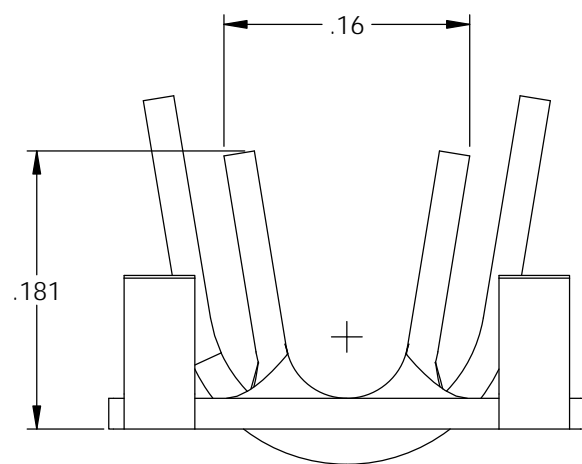
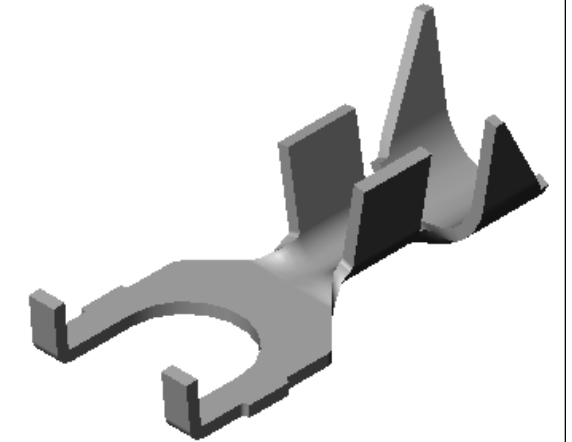
NOTES:

1. MATERIAL: .020 THICK BRASS
#2 TEMPER (1/2 HARD)
PER ETCO METAL CODE XXXXX.
2. MATERIAL: .020 THICK PRETINNED BRASS
#2 TEMPER (1/2 HARD)
PER ETCO METAL CODE 2-1570.
3. PARTS MAY BE COATED WITH A LIGHT FILM OF LUBRICATION USED IN THE MANUFACTURING PROCESS.
4. WIRE RANGE: 20-14 AWG.
5. INSULATION DIAMETER RANGE: ϕ .075- ϕ .175.



Part Number	DIM 'X'	Mat'l	UL
4000 3B1-4	.120	Note 1	X
4000 3B2-4	.120	Note 2	X
4000 3B1-6	.148	Note 1	X
4000 3B2-6	.148	Note 2	X
4000 3B1-8	.172	Note 1	X
4000 3B2-8	.172	Note 2	X
4000 3B1-10	.198	Note 1	X
4000 3B2-10	.198	Note 2	X

Rev.	Description of Change/ SCN#	Date
-	Approved For Mfg SCJ	7/28/20



UNCONTROLLED COPY

<p>THIRD ANGLE PROJECTION TOLERANCES UNLESS OTHERWISE SPECIFIED INCHES: .XX - ±.030 .XXX - ±.015 ANGLES: ±5°</p>	<p>TOOL NO. 1036</p>	<p>Title: Spade Terminal</p>		
		<p>DO NOT SCALE DWG.</p>	<p>Drawn By: S.Johnson</p>	<p>Date: 4/21/20</p>
<p>ETCO Incorporated Engineered Products 25 Bellows Street Warwick, RI 02888 Phone: (401) 467-2400 Fax: (401) 467-9230 www.ETCO.com</p>		<p>Design Control By: ETCO</p>	<p>Scale: 8X</p>	<p>Size B</p>
		<p>Dwg. No.: 4000 3B1,2 -4,-6,-8,-10 cust</p>		