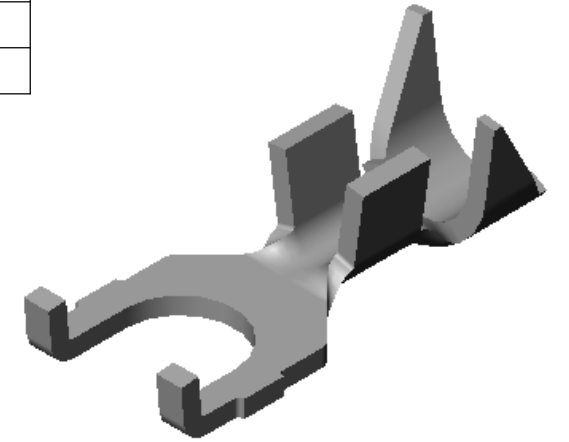
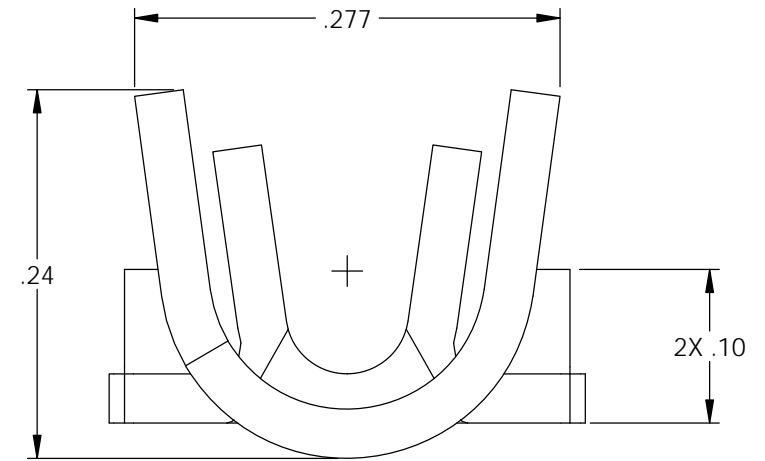
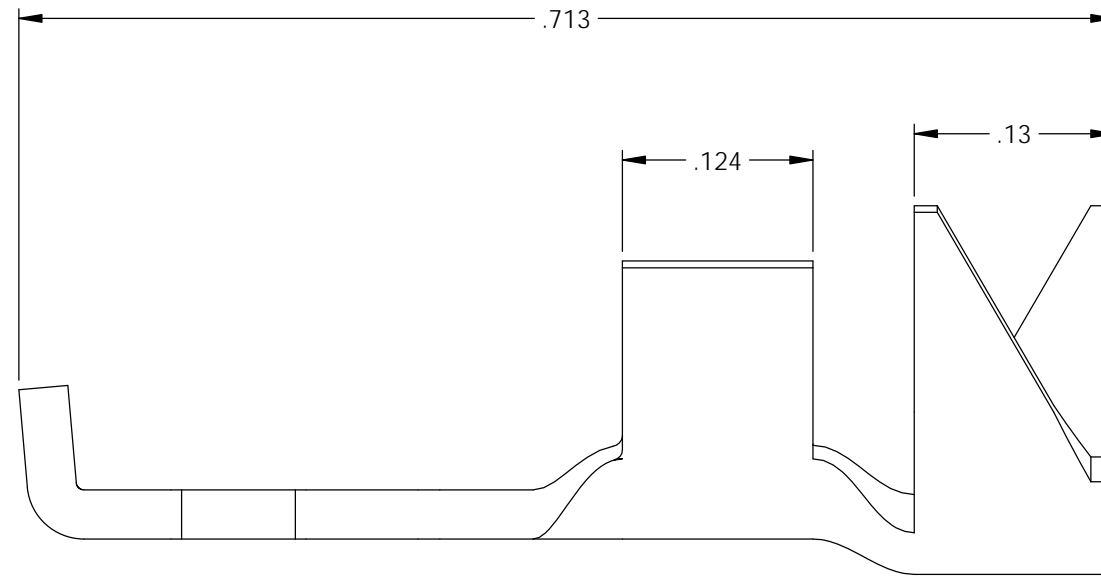
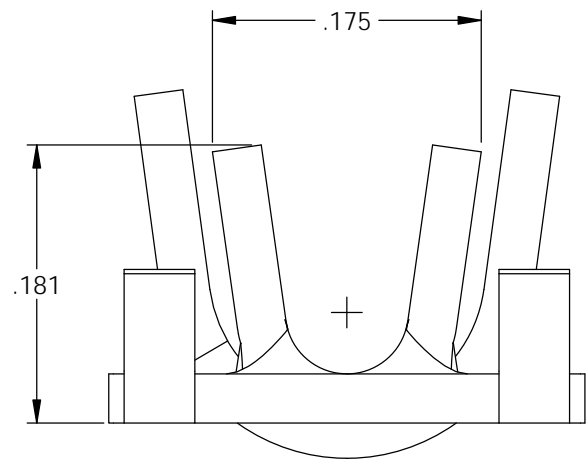
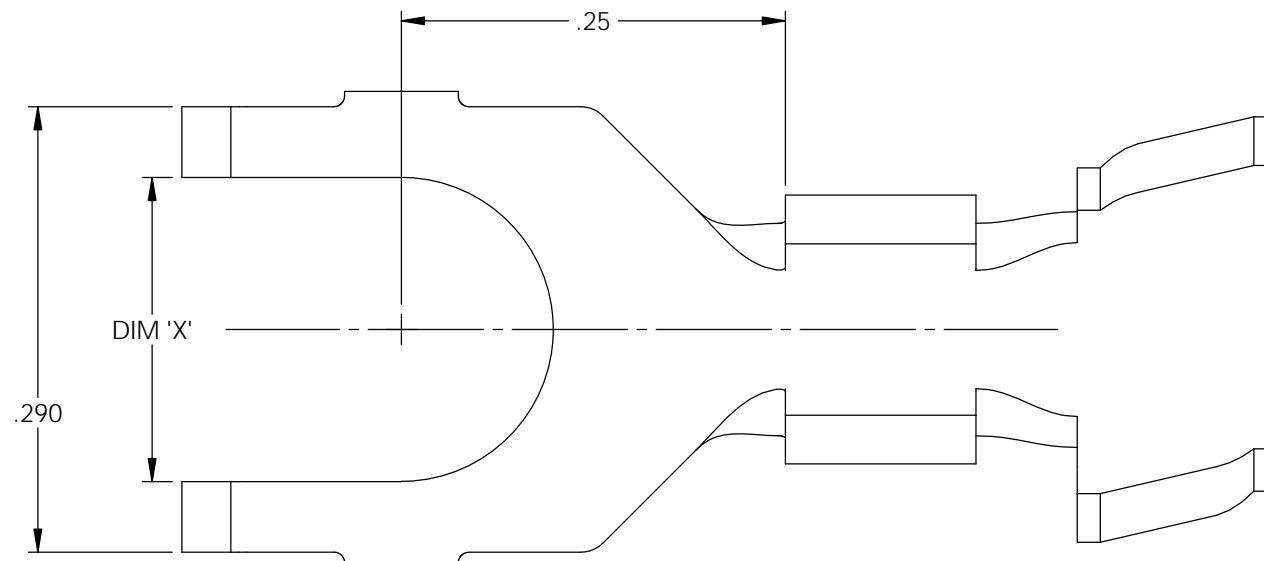


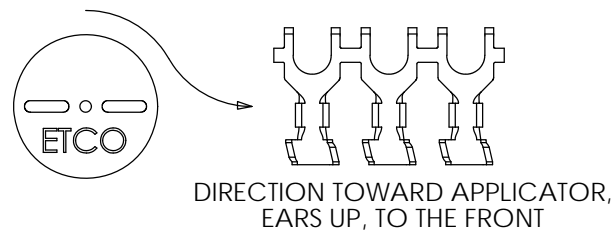
NOTES:

- MATERIAL: .032 THICK BRASS  
#2 TEMPER (1/2 HARD)  
PER ETCO METAL CODE XXXXX.
- MATERIAL: .032 THICK PRETINNED BRASS  
#2 TEMPER (1/2 HARD)  
PER ETCO METAL CODE XXXXX.
- PARTS MAY BE COATED WITH A LIGHT FILM OF LUBRICATION USED IN THE MANUFACTURING PROCESS.
- WIRE RANGE: 20-14 AWG.
- INSULATION DIAMETER RANGE:  $\phi$ .075- $\phi$ .175.



Part Number	DIM 'X'	Mat'l	UL
4000 3B3-4	.120	Note 1	X
4000 3B4-4	.120	Note 2	X
4000 3B3-6	.148	Note 1	X
4000 3B4-6	.148	Note 2	X
4000 3B3-8	.172	Note 1	X
4000 3B4-8	.172	Note 2	X
4000 3B3-10	.198	Note 1	X
4000 3B4-10	.198	Note 2	X

Rev.	Description of Change/ SCN#	Date
A	Approved For Quote SCJ	4/13/20



# UNCONTROLLED COPY

<p>THIRD ANGLE PROJECTION TOLERANCES UNLESS OTHERWISE SPECIFIED INCHES: .XX - <math>\pm</math>.030 .XXX - <math>\pm</math>.015 ANGLES: <math>\pm</math>5°</p>	<p>TOOL NO. <b>1036</b></p>	<p>Title: <b>Spade Terminal</b></p>		
		<p>DO NOT SCALE DWG.</p>	<p>Drawn By: <b>S.Johnson</b></p>	<p>Date: <b>4/13/20</b></p>
<p>ETCO Incorporated Engineered Products 25 Bellows Street Warwick, RI 02888 Phone: (401) 467-2400 Fax: (401) 467-9230 www.ETCO.com</p>		<p>Design Control By: <b>ETCO</b></p>	<p>Scale: <b>8X</b></p>	<p>Size <b>B</b></p>
		<p>Dwg. No.: <b>4000 3B3,4 -4,-6,-8,-10 cust</b></p>		