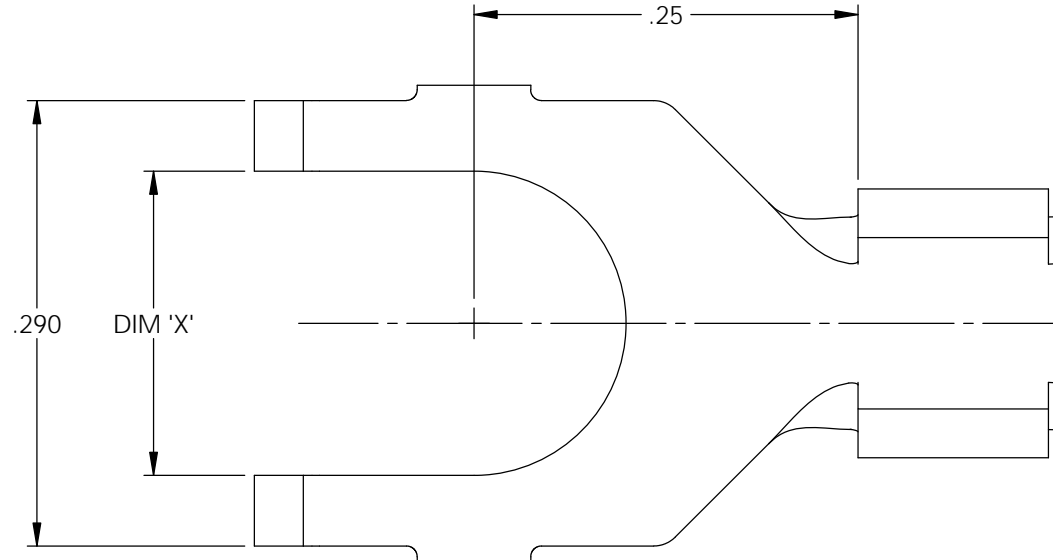


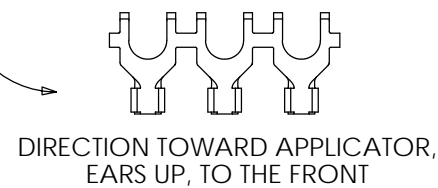
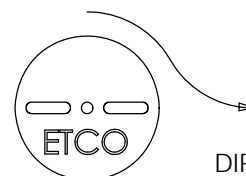
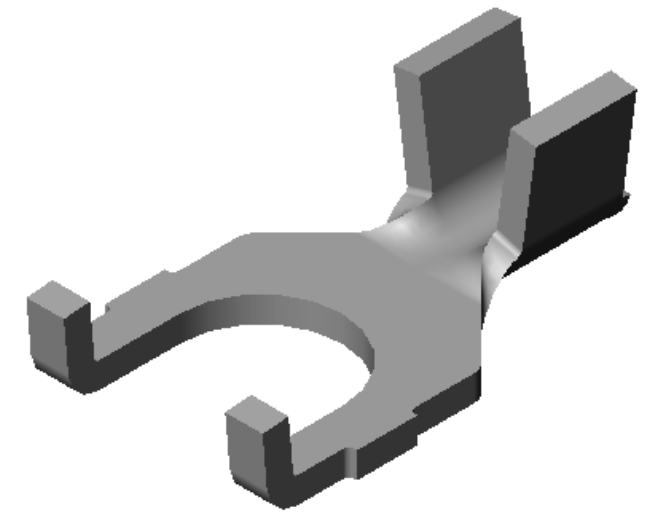
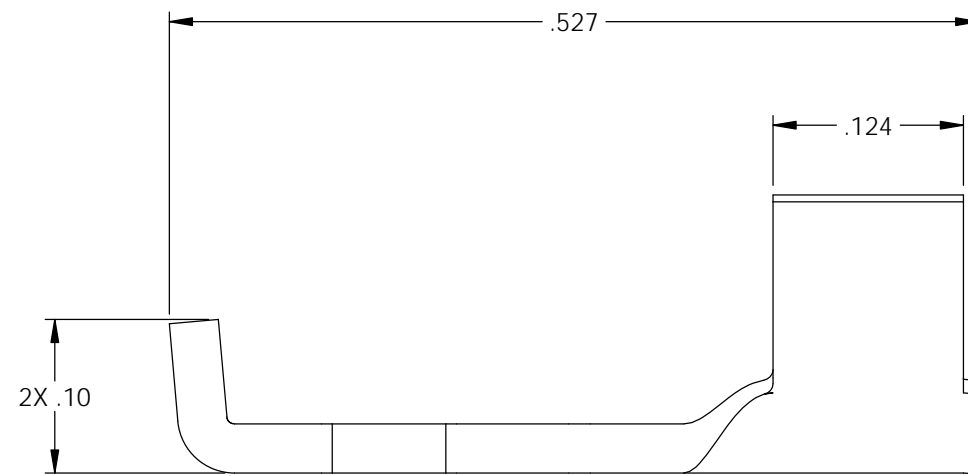
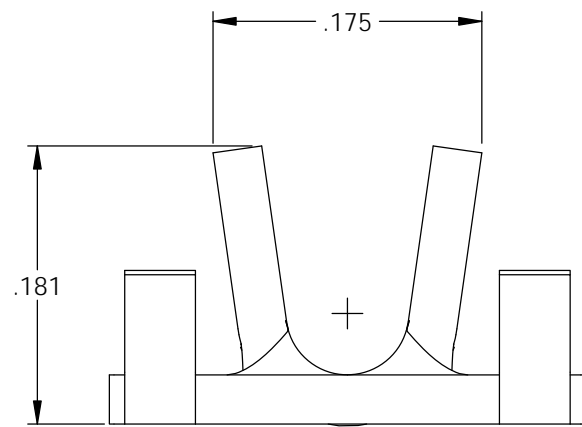
NOTES:

- MATERIAL: .032 THICK BRASS
#2 TEMPER (1/2 HARD)
PER ETCO METAL CODE XXXXX.
- MATERIAL: .032 THICK PRETINNED BRASS
#2 TEMPER (1/2 HARD)
PER ETCO METAL CODE XXXXX.
- PARTS MAY BE COATED WITH A LIGHT FILM OF LUBRICATION USED IN THE MANUFACTURING PROCESS.
- WIRE RANGE: 20-14 AWG.



Part Number	DIM 'X'	Mat'l	UL
4000 3B3-3	.120	Note 1	X
4000 3B4-3	.120	Note 2	X
4000 3B3-5	.148	Note 1	X
4000 3B4-5	.148	Note 2	X
4000 3B3-7	.172	Note 1	X
4000 3B4-7	.172	Note 2	X
4000 3B3-9	.198	Note 1	X
4000 3B4-9	.198	Note 2	X

Rev.	Description of Change/ SCN#	Date
A	Approved For Quote SCJ	4/13/20



THIS PRINT IS THE PROPERTY OF ETCO INCORPORATED. NO PART OF THIS DESIGN MAY BE USED IN ANY WAY WITHOUT WRITTEN CONSENT FROM ETCO INCORPORATED.

UNCONTROLLED COPY

 THIRD ANGLE PROJECTION TOLERANCES UNLESS OTHERWISE SPECIFIED INCHES: .XX - ±.030 .XXX - ±.015 ANGLES: ±5°	TOOL NO. 1036	Title: Spade Terminal		
	 ETCO	DO NOT SCALE DWG.	Drawn By: S.Johnson	Date: 4/13/20
ETCO Incorporated Engineered Products 25 Bellows Street Warwick, RI 02888 Phone: (401) 467-2400 Fax: (401) 467-9230 www.ETCO.com		Design Control By: ETCO	Scale: 8X	Size B
		Dwg. No.: 4000 3B3,4 -3,-5,-7,-9 cust		