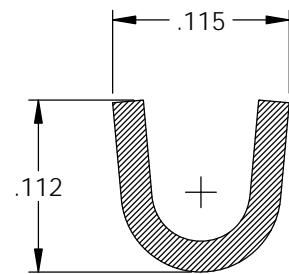
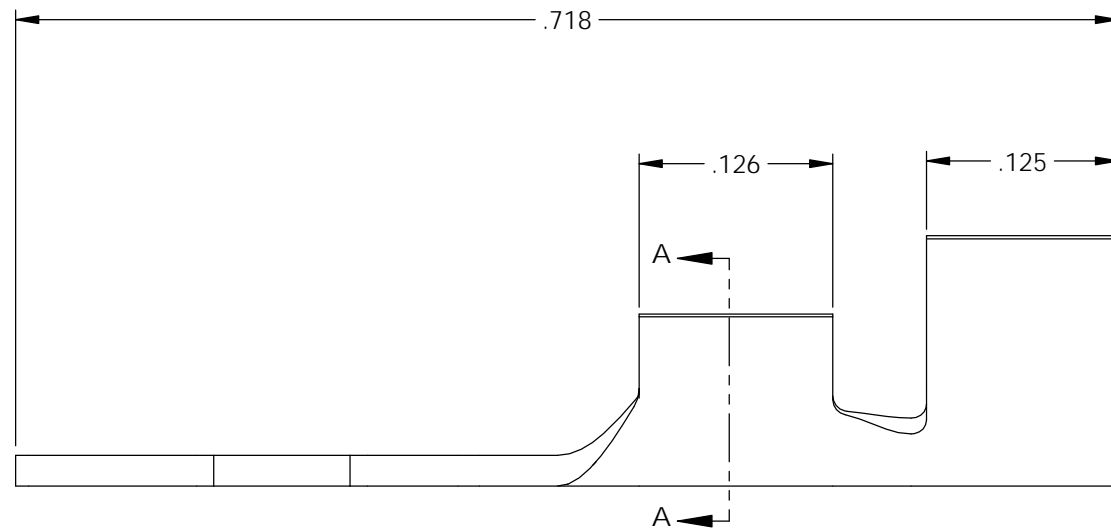
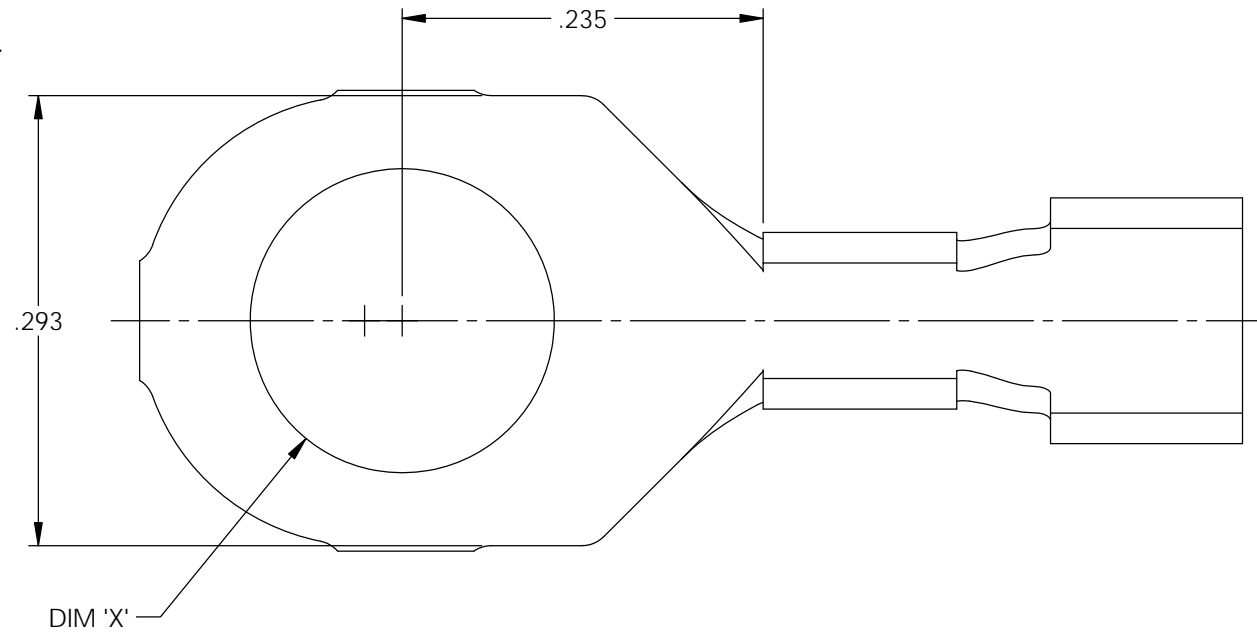


NOTES:

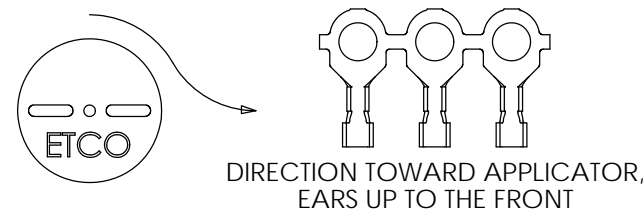
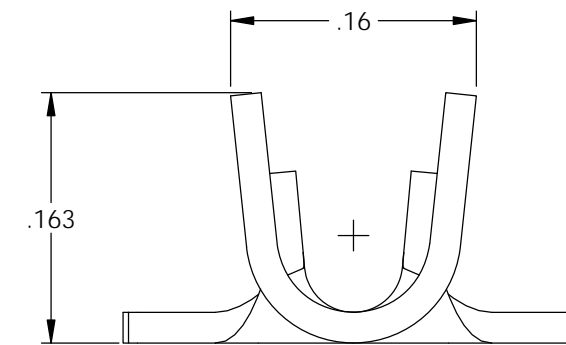
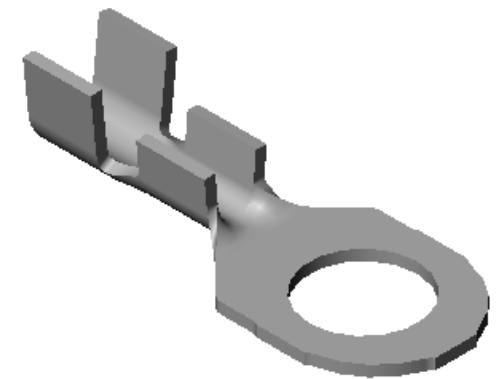
1. MATERIAL: .020 THICK BRASS  
#2 TEMPER (1/2 HARD)  
PER ETCO METAL CODE 2-0537.
2. MATERIAL: .020 THICK PRETINNED BRASS  
#2 TEMPER (1/2 HARD)  
PER ETCO METAL CODE 2-1570.
3. PARTS MAY BE COATED WITH A LIGHT FILM OF LUBRICATION USED IN THE MANUFACTURING PROCESS.
4. WIRE RANGE: 18-24 AWG.
5. INSULATION DIAMETER RANGE:  $\phi$ .075- $\phi$ .125.



SECTION A-A

Part Number	DIM 'X'	Mat'l	UL
4000-3G1-4-3	$\phi$ .120	Note 1	X
4000-3G2-4-3	$\phi$ .120	Note 2	X
4000-3G1-6-3	$\phi$ .148	Note 1	X
4000-3G2-6-3	$\phi$ .148	Note 2	X
4000-3G1-8-3	$\phi$ .172	Note 1	X
4000-3G2-8-3	$\phi$ .172	Note 2	X
4000-3G1-10-3	$\phi$ .198	Note 1	X
4000-3G2-10-3	$\phi$ .198	Note 2	X

Rev.	Description of Change/ SCN#	Date
-	Approved For Mfg SCJ	5/15/20
-	Added UL; ECR# 6065 SCJ	8/03/20



# UNCONTROLLED COPY

<p>THIRD ANGLE PROJECTION TOLERANCES UNLESS OTHERWISE SPECIFIED INCHES: .XX - <math>\pm</math>.030 .XXX - <math>\pm</math>.015 ANGLES: <math>\pm</math>5°</p>	<p>TOOL NO. <b>1040</b></p>	<p>Title: <b>Ring Terminal</b></p>		
		<p>DO NOT SCALE DWG.</p>	<p>Drawn By: <b>S.Johnson</b></p>	<p>Date: <b>3/24/20</b></p>
<p>ETCO Incorporated Engineered Products 25 Bellows Street Warwick, RI 02888 Phone: (401) 467-2400 Fax: (401) 467-9230 www.ETCO.com</p>		<p>Design Control By: <b>ETCO</b></p>	<p>Scale: <b>8X</b></p>	<p>Size <b>B</b></p>
		<p>Dwg. No.: <b>4000 3G-3 cust</b></p>		