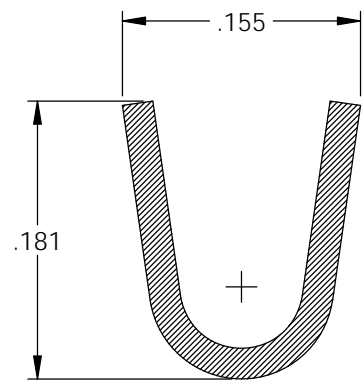
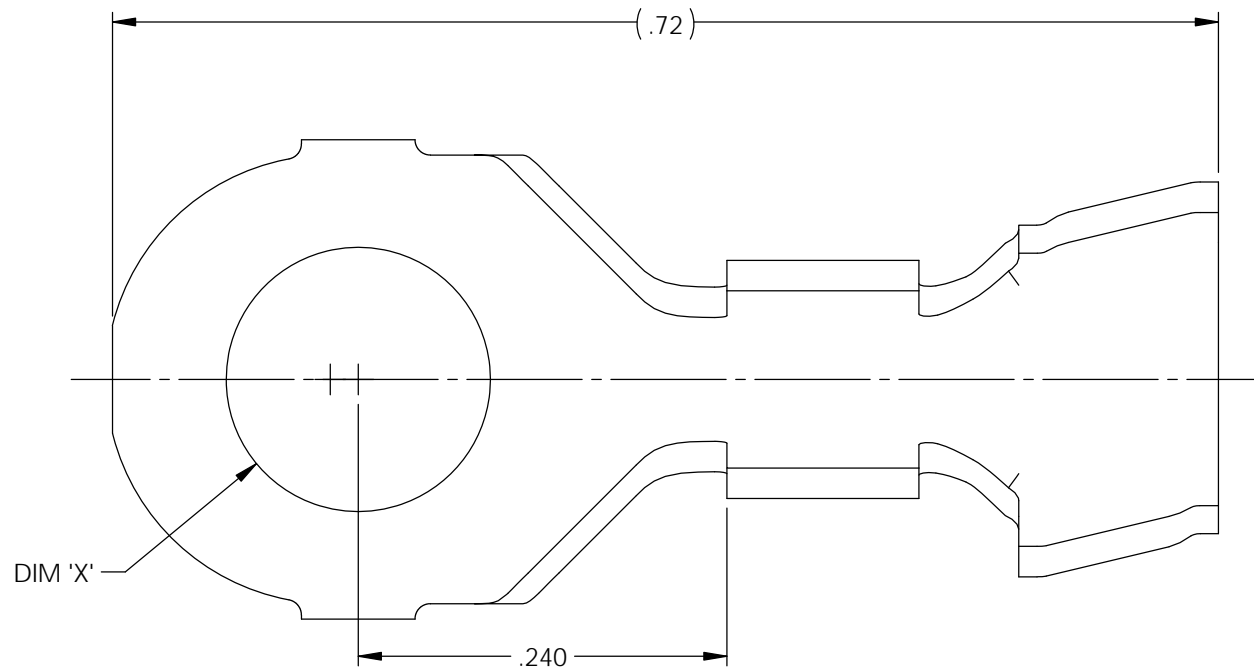
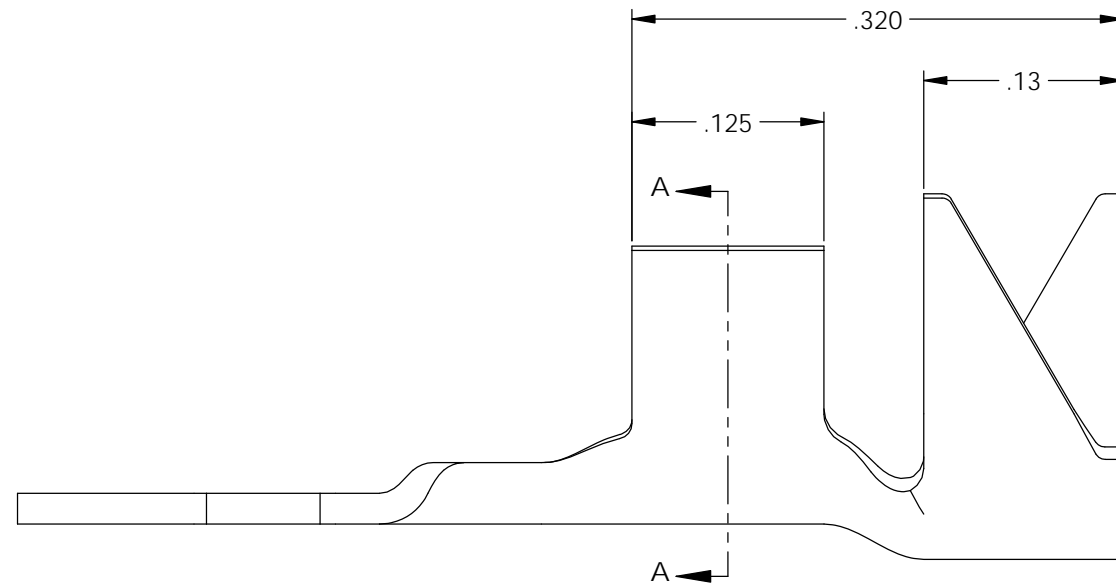



NOTES:

- MATERIAL: .020 THICK BRASS  
#2 TEMPER (1/2 HARD)  
PER ETCO METAL CODE XXXXX.
- MATERIAL: .020 THICK PRETINNED BRASS  
#2 TEMPER (1/2 HARD)  
PER ETCO METAL CODE XXXXX.
- MATERIAL: .020 THICK NICKEL PLATED BRASS  
#2 TEMPER (1/2 HARD)  
PER ETCO METAL CODE XXXXX.
- PARTS MAY BE COATED WITH A LIGHT FILM OF LUBRICATION USED IN THE MANUFACTURING PROCESS.
- WIRE RANGE: 14-20 AWG.
- INSULATION DIAMETER RANGE:  $\phi$ .075- $\phi$ .175.

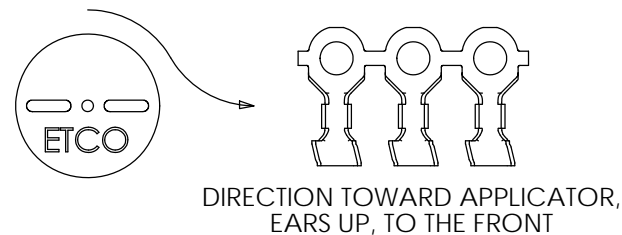
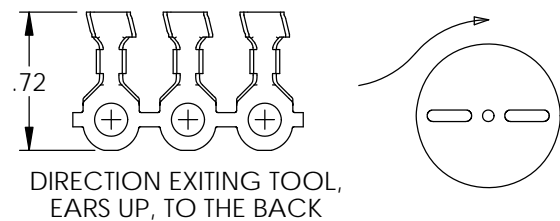
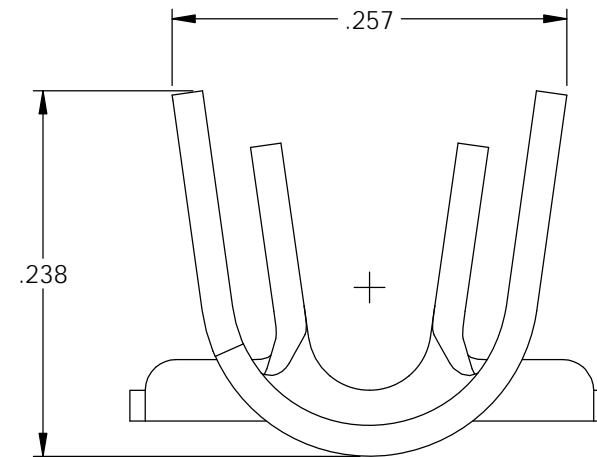


SECTION A-A

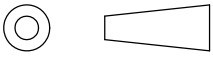



Part Number	Dim 'X'	Mat'l	
4000-3G1-2	$\phi$ .094	Note 1	X
4000-3G2-2	$\phi$ .094	Note 2	X
4000-3G1-4	$\phi$ .120	Note 1	X
4000-3G2-4	$\phi$ .120	Note 2	X
4000-3G1-6	$\phi$ .148	Note 1	X
4000-3G2-6	$\phi$ .148	Note 2	X
4000-3G1-8	$\phi$ .172	Note 1	X
4000-3G2-8	$\phi$ .172	Note 2	X
4000-3G1-10	$\phi$ .198	Note 1	X
4000-3G2-10	$\phi$ .198	Note 2	X
4000-3G1-10-5	$\phi$ .198	Note 3	X

Rev.	Description of Change/ SCN#	Date
-	Approved For Mfg SCJ	7/01/20
-	Added ; ECR# 6065 SCJ	8/03/20



# UNCONTROLLED COPY

 THIRD ANGLE PROJECTION TOLERANCES UNLESS OTHERWISE SPECIFIED INCHES: .XX - $\pm$ .030 .XXX - $\pm$ .015 ANGLES: $\pm$ 5°	TOOL NO. <b>1023</b>	Title: <b>Ring Terminal</b>		
		DO NOT SCALE DWG.	Drawn By: <b>S. Johnson</b>	Date: <b>2/26/20</b>
ETCO Incorporated Engineered Products 25 Bellows Street Warwick, RI 02888 Phone: (401) 467-2400 Fax: (401) 467-9230 www.ETCO.com		Design Controlled By: <b>ETCO</b>	Scale: <b>8X</b>	Size <b>B</b>
Dwg. No.: <b>4000 3G1,2 -2,-4,-6,-8,-10 cust</b>				