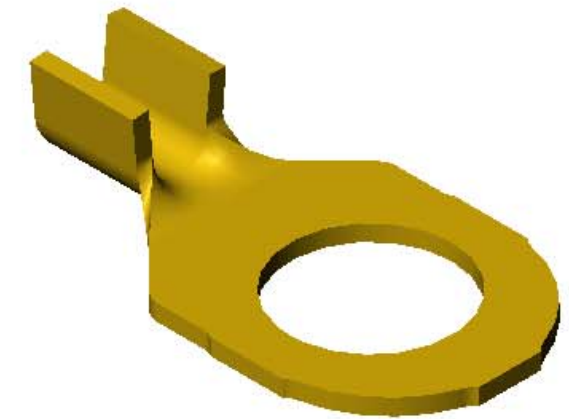
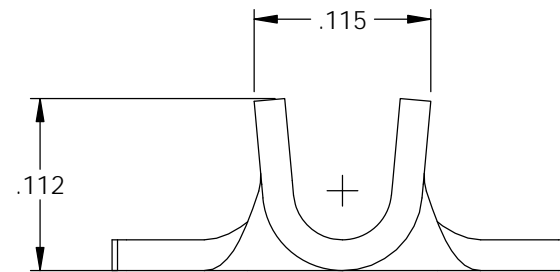
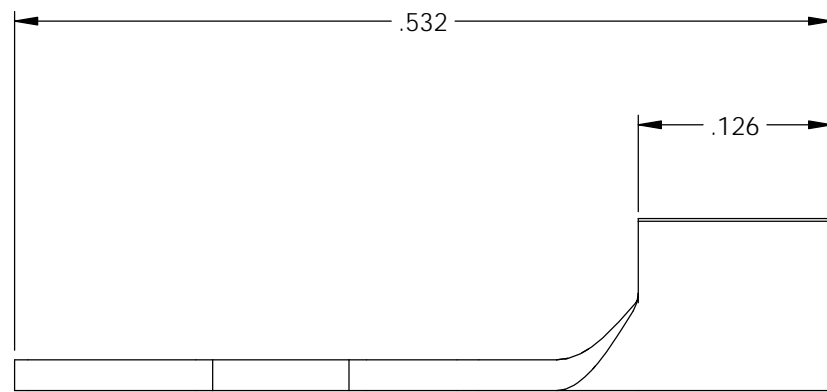
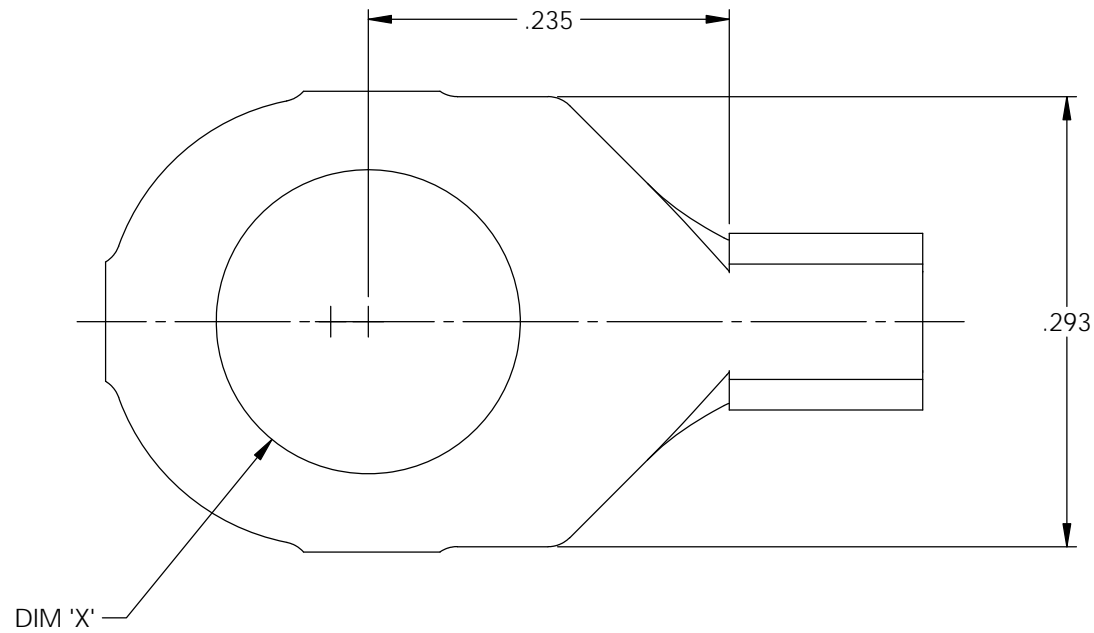



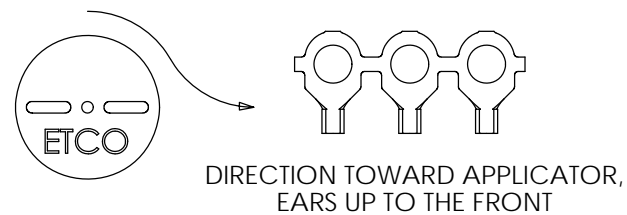
NOTES:

- MATERIAL: .020 THICK BRASS  
#2 TEMPER (1/2 HARD)  
PER ETCO METAL CODE 2-0537.
- MATERIAL: .020 THICK PRETINNED BRASS  
#2 TEMPER (1/2 HARD)  
PER ETCO METAL CODE 2-1570.
- PARTS MAY BE COATED WITH A LIGHT FILM OF LUBRICATION USED IN THE MANUFACTURING PROCESS.
- WIRE RANGE: 18-24 AWG.
- INSULATION DIAMETER RANGE:  $\phi$ .075- $\phi$ .125.

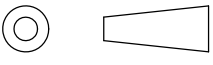



Part Number	DIM 'X'	Mat'l	
4000-3G1-3-3	$\phi$ .120	Note 1	X
4000-3G2-3-3	$\phi$ .120	Note 2	X
4000-3G1-5-3	$\phi$ .148	Note 1	X
4000-3G2-5-3	$\phi$ .148	Note 2	X
4000-3G1-7-3	$\phi$ .172	Note 1	X
4000-3G2-7-3	$\phi$ .172	Note 2	X
4000-3G1-9-3	$\phi$ .198	Note 1	X
4000-3G2-9-3	$\phi$ .198	Note 2	X

Rev.	Description of Change/ SCN#	Date
A	Approved For Quote SCJ	4/27/20



# UNCONTROLLED COPY

 THIRD ANGLE PROJECTION TOLERANCES UNLESS OTHERWISE SPECIFIED INCHES: .XX - $\pm$ .030 .XXX - $\pm$ .015 ANGLES: $\pm$ 5°	TOOL NO. <b>1040</b>	Title: <b>Ring Terminal</b>		
		DO NOT SCALE DWG.	Drawn By: S.Johnson	Date: 4/27/20
ETCO Incorporated Engineered Products 25 Bellows Street Warwick, RI 02888 Phone: (401) 467-2400 Fax: (401) 467-9230 www.ETCO.com		Design Control By: ETCO	Scale: 8X	Size B
		Dwg. No.: <b>4000 3G1,2 -3,-5,-7,-9-3 cust</b>		