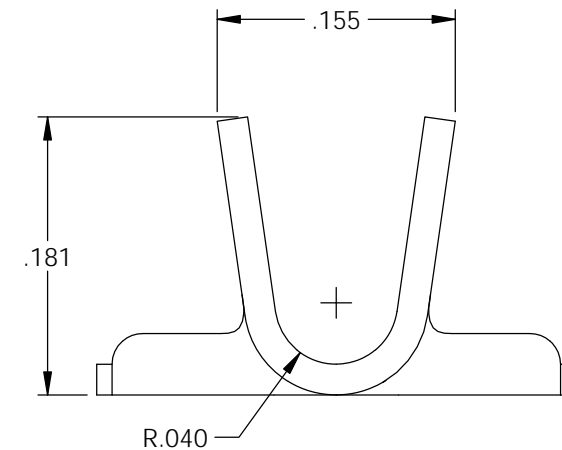
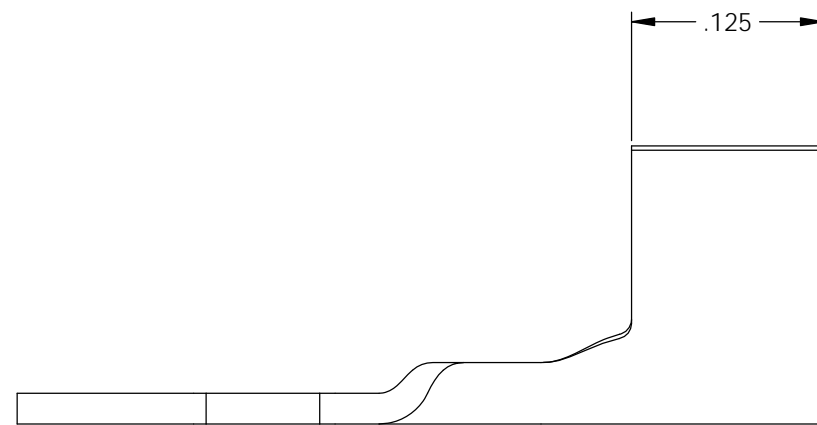
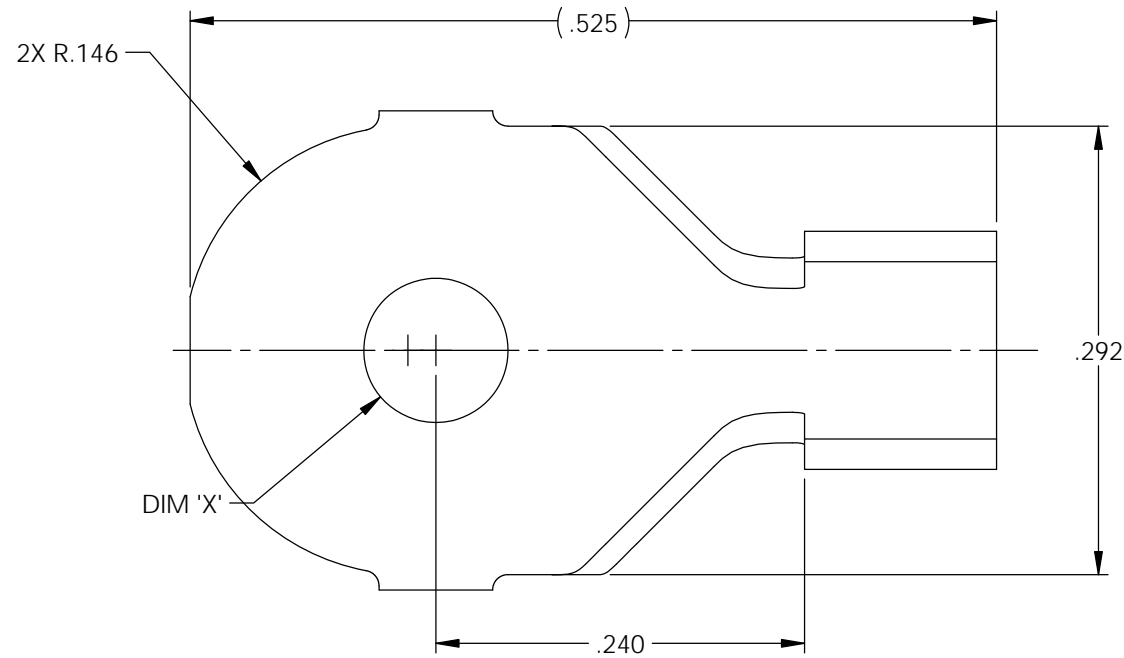



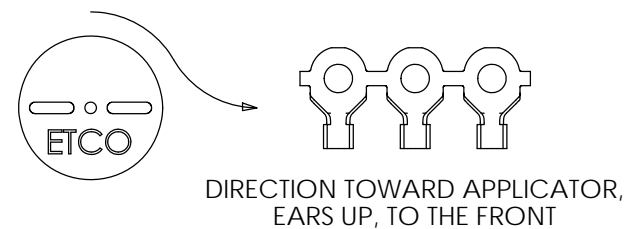
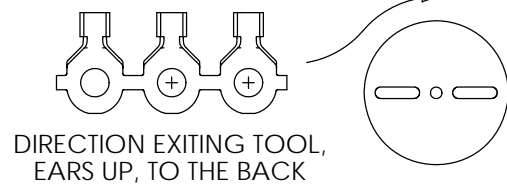
NOTES:

- MATERIAL: .020 THICK BRASS  
#2 TEMPER (1/2 HARD)  
PER ETCO METAL CODE 2-0321.
- MATERIAL: .020 THICK PRETINNED BRASS  
#2 TEMPER (1/2 HARD)  
PER ETCO METAL CODE XXXXX.
- PARTS MAY BE COATED WITH A LIGHT FILM OF LUBRICATION USED IN THE MANUFACTURING PROCESS.
- WIRE RANGE: 14-20 AWG.





Part Number	Dim 'X'	Mat'l	
4000-3G1-1	∅.094	Note 1	
4000-3G2-1	∅.094	Note 2	
4000-3G1-3	∅.120	Note 1	X
4000-3G2-3	∅.120	Note 2	X
4000-3G1-5	∅.148	Note 1	X
4000-3G2-5	∅.148	Note 2	X
4000-3G1-7	∅.172	Note 1	X
4000-3G2-7	∅.172	Note 2	X
4000-3G1-9	∅.198	Note 1	X
4000-3G2-9	∅.198	Note 2	X
4000-3G1-15	∅.224	Note 1	X
4000-3G2-15	∅.224	Note 2	X

Rev.	Description of Change/ SCN#	Date
-	Approved For Mfg SCJ	8/03/20



THIS PRINT IS THE PROPERTY OF ETCO INCORPORATED. NO PART OF THIS DESIGN MAY BE USED IN ANY WAY WITHOUT WRITTEN CONSENT FROM ETCO INCORPORATED.

# UNCONTROLLED COPY

 THIRD ANGLE PROJECTION TOLERANCES UNLESS OTHERWISE SPECIFIED INCHES: .XX - ±.030 .XXX - ±.015 ANGLES: ±5°	TOOL NO. <b>1023</b>	Title: <b>Ring Terminal</b>		
		DO NOT SCALE DWG.	Drawn By: <b>S.Johnson</b>	Date: <b>4/13/20</b>
ETCO Incorporated Engineered Products 25 Bellows Street Warwick, RI 02888 Phone: (401) 467-2400 Fax: (401) 467-9230 www.ETCO.com		Design Control By: <b>ETCO</b>	Scale: <b>8X</b>	Size <b>B</b>
		Dwg. No.: <b>4000 3G1,2 -1,-3,-5,-7,-9,-15 cust</b>		