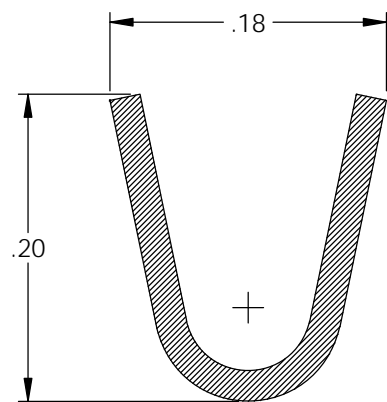
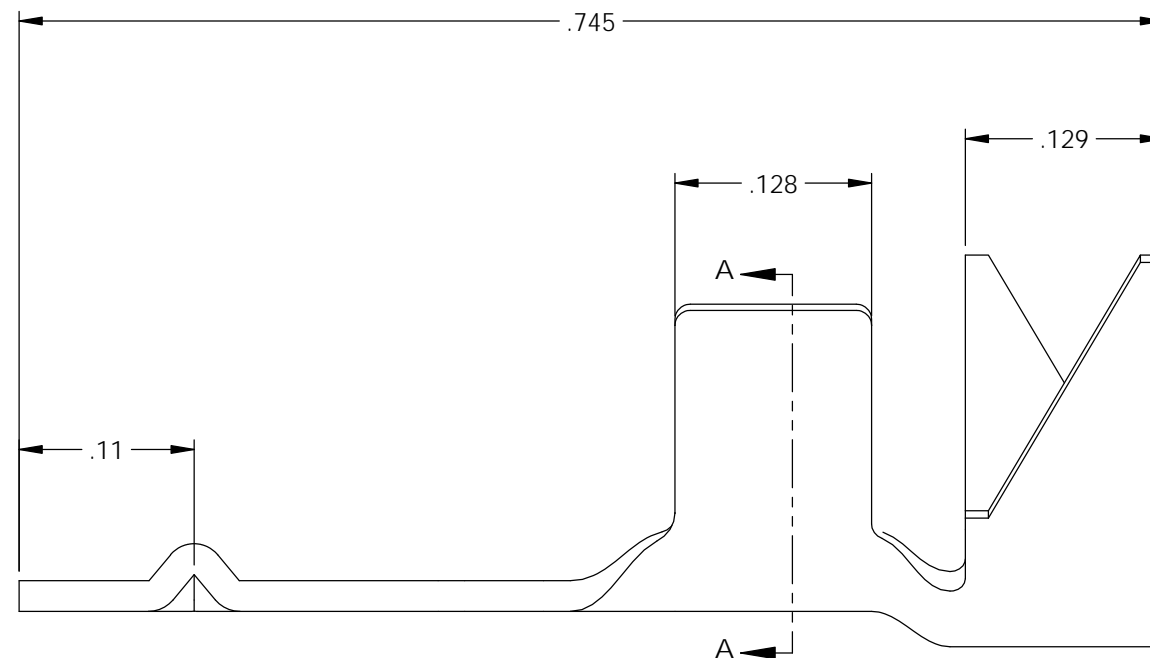
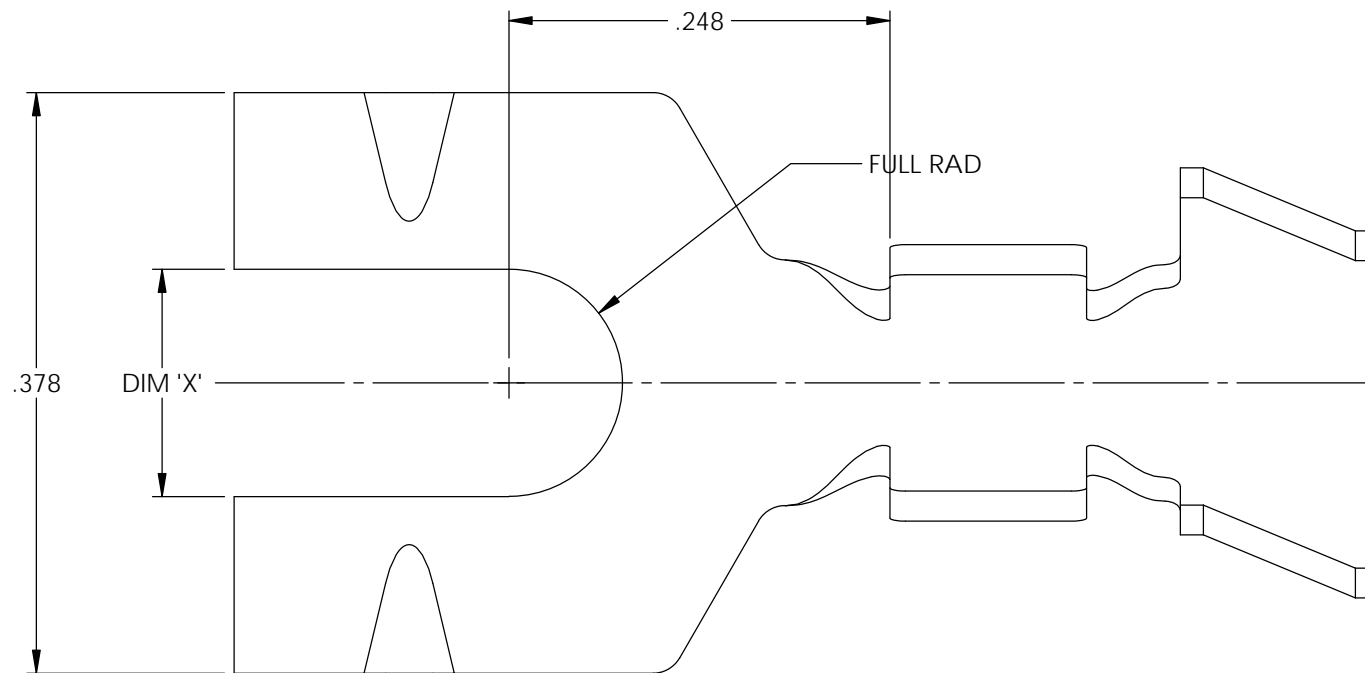
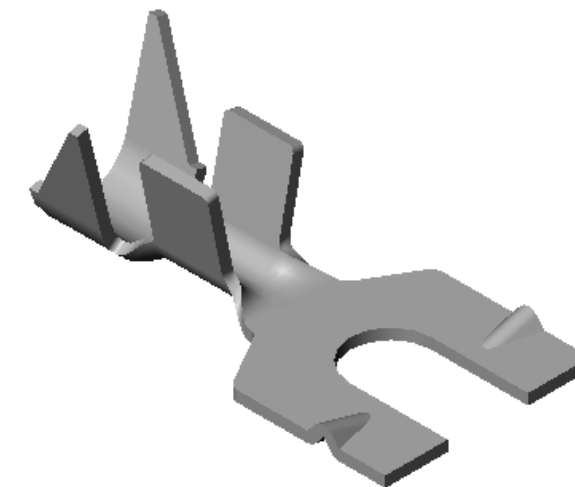
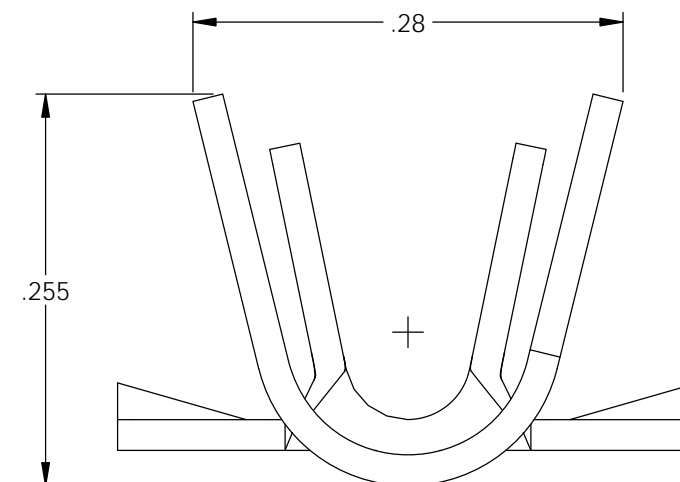


NOTES:

1. MATERIAL: .020 THICK BRASS
#2 TEMPER (1/2 HARD)
PER ETCO METAL CODE XXXXX.
2. MATERIAL: .020 THICK PRETINNED BRASS
#2 TEMPER (1/2 HARD)
PER ETCO METAL CODE XXXXX.
3. PARTS MAY BE COATED WITH A LIGHT
FILM OF LUBRICATION USED IN THE
MANUFACTURING PROCESS.
4. WIRE RANGE: 12-20 AWG.
5. INSUL RANGE: ϕ .075-.175

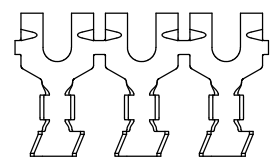
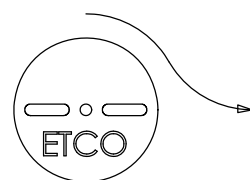


SECTION A-A



| Part Number | DIM 'X' | Mat'l | UL |
|-------------|---------|--------|----|
| 4000 4C1-6 | .148 | Note 1 | X |
| 4000 4C2-6 | .148 | Note 2 | X |
| 4000 4C1-8 | .174 | Note 1 | X |
| 4000 4C2-8 | .174 | Note 2 | X |
| 4000 4C1-10 | .204 | Note 1 | X |
| 4000 4C2-10 | .204 | Note 2 | X |

| Rev. | Description of Change/ SCN# | Date |
|------|-----------------------------|---------|
| A | Approved For Quote SCJ | 6/05/20 |



DIRECTION TOWARD APPLICATOR,
EARS UP, TO THE FRONT

UNCONTROLLED COPY

| | | | | |
|---|---------------------------------|---|-----------------------------------|-----------------------------|
| <p>THIRD ANGLE PROJECTION TOLERANCES UNLESS OTHERWISE SPECIFIED INCHES: .XX - \pm.030 .XXX - \pm.015 ANGLES: \pm5°</p> | <p>TOOL NO. 1024</p> | <p>Title: Spade Terminal</p> | | |
| | | <p>DO NOT SCALE DWG.</p> | <p>Drawn By: S.Johnson</p> | <p>Date: 6/05/20</p> |
| <p>ETCO Incorporated Engineered Products 25 Bellows Street Warwick, RI 02888 Phone: (401) 467-2400 Fax: (401) 467-9230 www.ETCO.com</p> | | <p>Design Control By: ETCO</p> | <p>Scale: 8X</p> | <p>Size B</p> |
| <p>Dwg. No.: 4000 4C1 and 4C2-6, -8, -10 cust</p> | | | | |