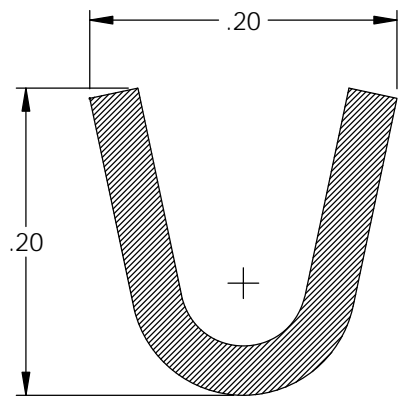
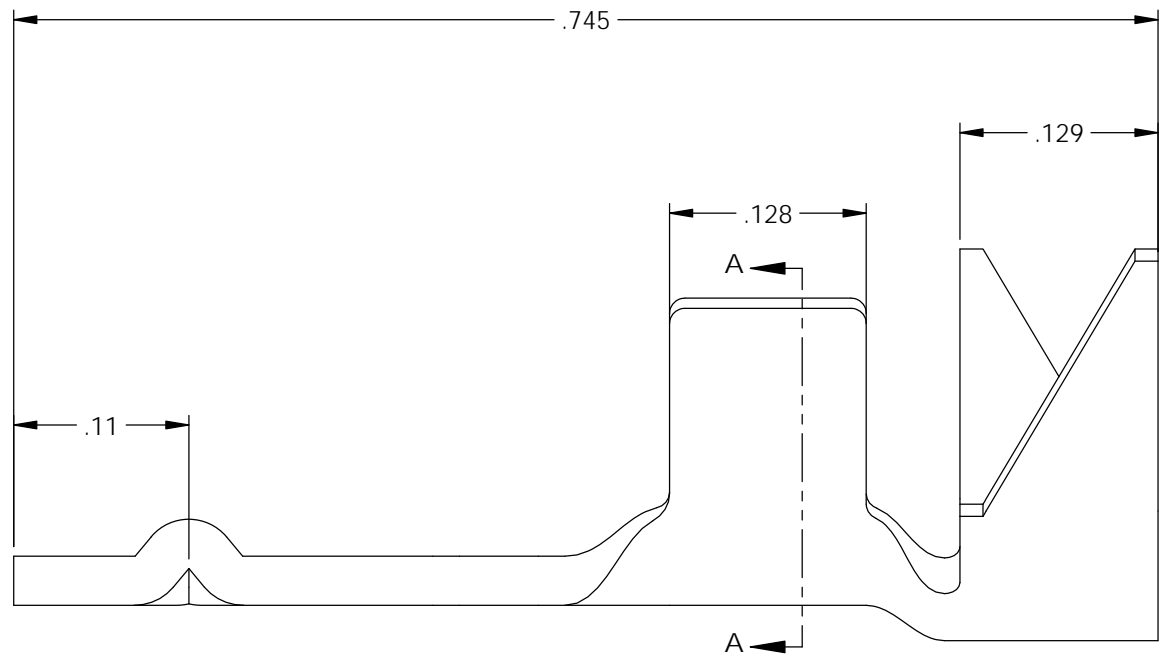
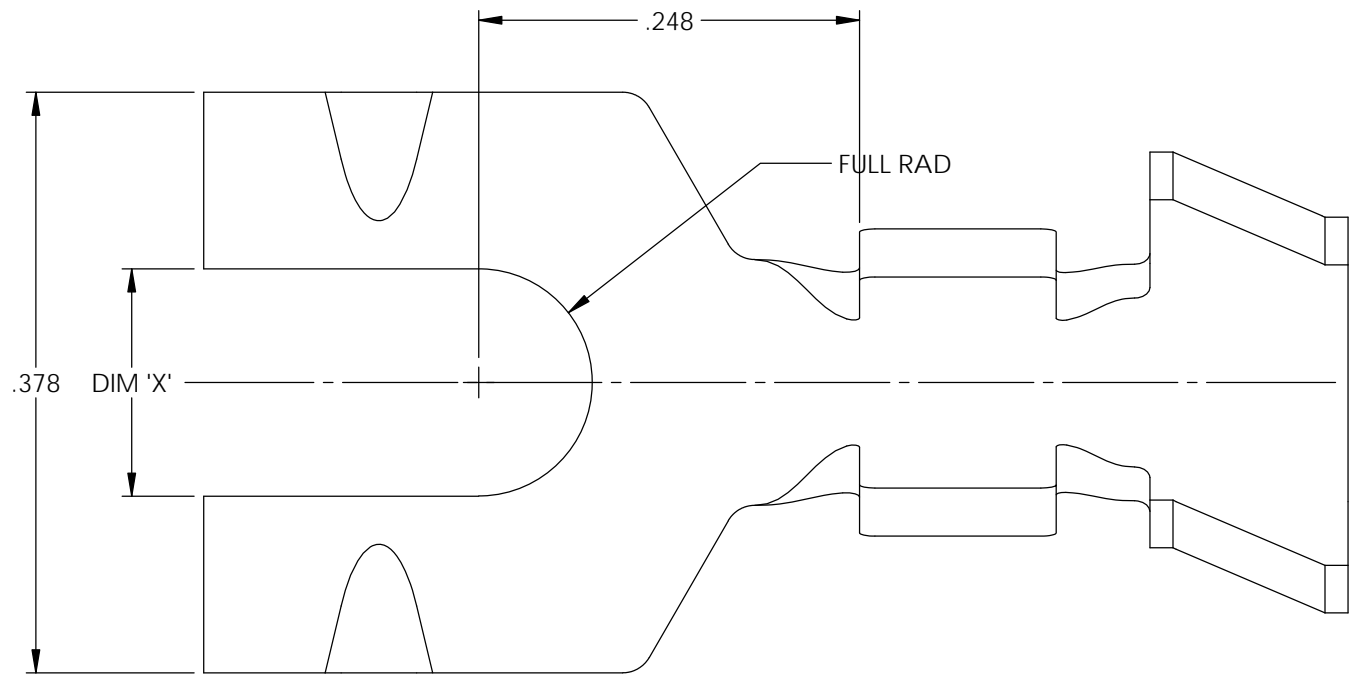
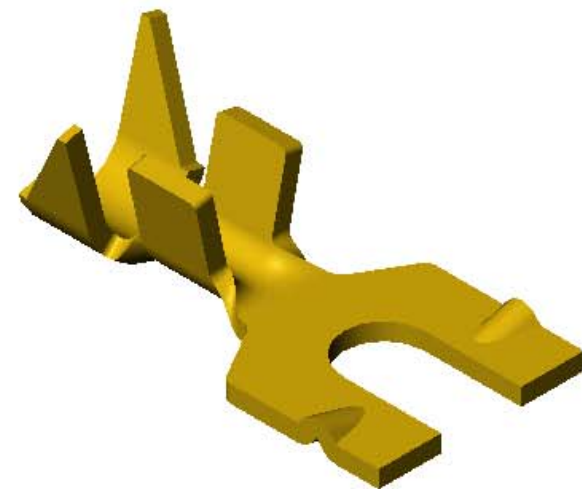
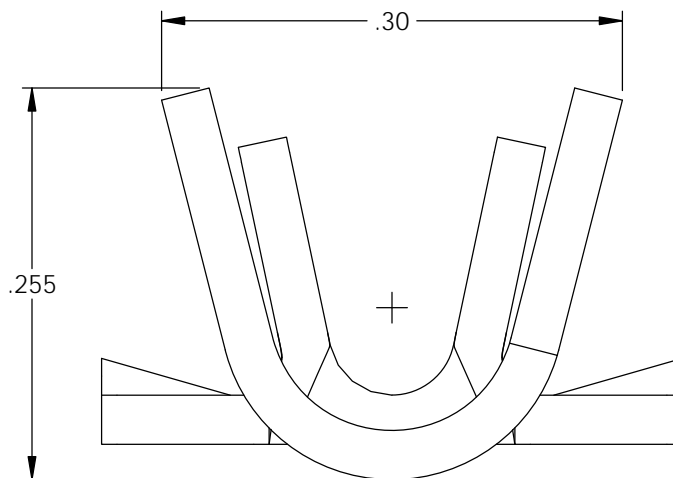


NOTES:

1. MATERIAL: .032 THICK BRASS
#2 TEMPER (1/2 HARD)
PER ETCO METAL CODE XXXXX.
2. MATERIAL: .032 THICK PRETINNED BRASS
#2 TEMPER (1/2 HARD)
PER ETCO METAL CODE XXXXX.
3. PARTS MAY BE COATED WITH A LIGHT FILM OF LUBRICATION USED IN THE MANUFACTURING PROCESS.
4. WIRE RANGE: 12-20 AWG.
5. INSUL RANGE: ϕ .075-.175

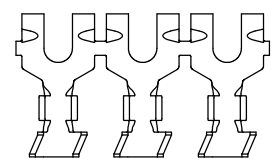
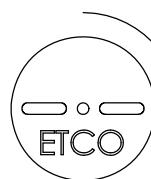


SECTION A-A



| Part Number | DIM 'X' | Mat'l | UL |
|-------------|---------|--------|----|
| 4000 4C3-6 | .148 | Note 1 | X |
| 4000 4C4-6 | .148 | Note 2 | X |
| 4000 4C3-8 | .174 | Note 1 | X |
| 4000 4C4-8 | .174 | Note 2 | X |
| 4000 4C3-10 | .204 | Note 1 | X |
| 4000 4C4-10 | .204 | Note 2 | X |

| Rev. | Description of Change/ SCN# | Date |
|------|-----------------------------|---------|
| A | Approved For Quote SCJ | 6/05/20 |



DIRECTION TOWARD APPLICATOR,
EARS UP, TO THE FRONT

UNCONTROLLED COPY

| | | | | |
|--|-------------------------|--|----------------------------|----------------------|
| THIRD ANGLE PROJECTION TOLERANCES UNLESS OTHERWISE SPECIFIED INCHES: .XX - \pm .030 .XXX - \pm .015 ANGLES: \pm 5° | TOOL NO. 1024 | Title: Spade Terminal | | |
| | | DO NOT SCALE DWG. | Drawn By: S.Johnson | Date: 6/05/20 |
| ETCO Incorporated Engineered Products 25 Bellows Street Warwick, RI 02888 Phone: (401) 467-2400 Fax: (401) 467-9230 www.ETCO.com | | Design Control By: ETCO | Scale: 8X | Size B |
| | | Dwg. No.: 4000 4C3 and 4C4-6, -8, -10 cust | | |