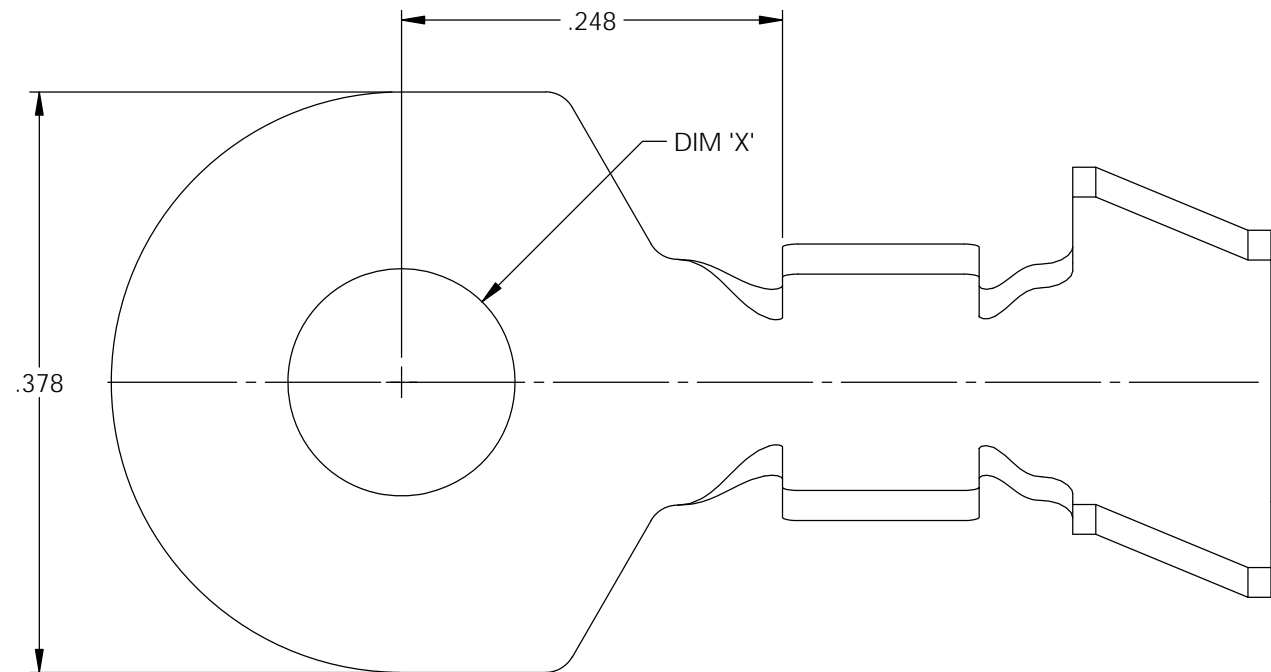
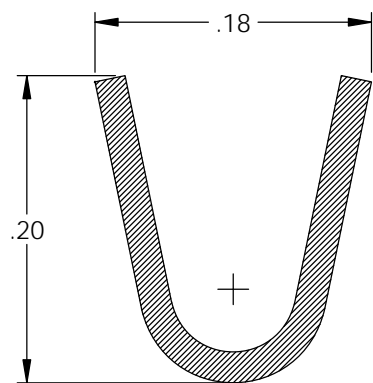
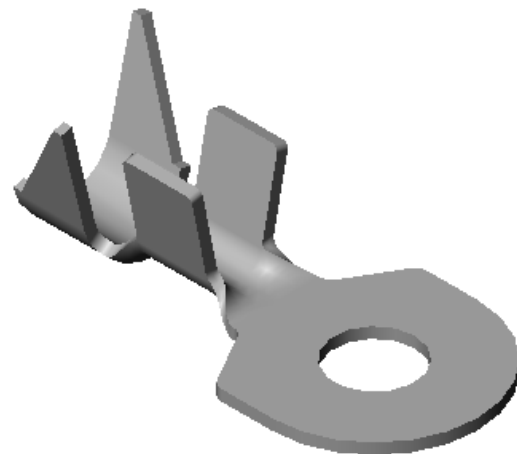


NOTES:

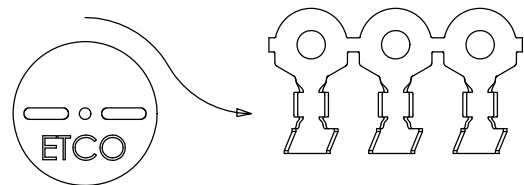
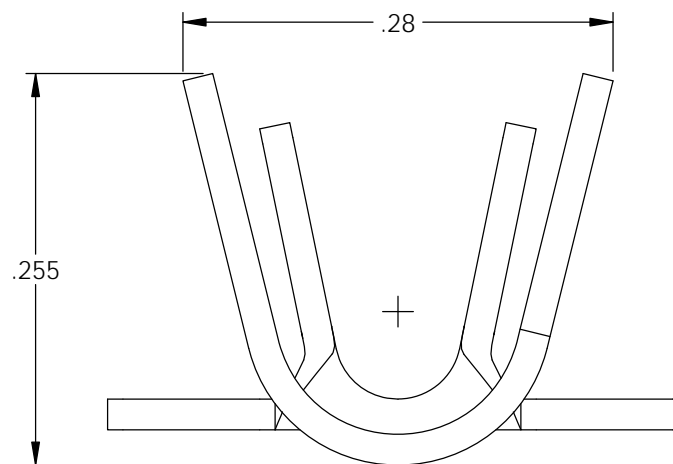
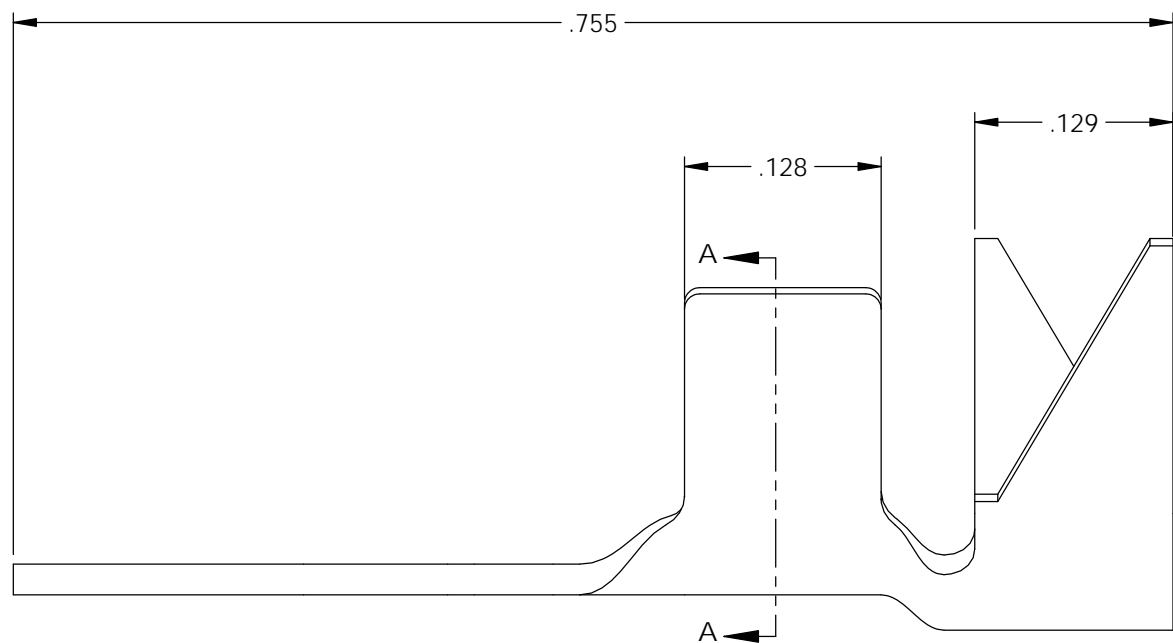
1. MATERIAL: .020 THICK BRASS
#2 TEMPER (1/2 HARD)
PER ETCO METAL CODE XXXXX.
2. MATERIAL: .020 THICK PRETINNED BRASS
#2 TEMPER (1/2 HARD)
PER ETCO METAL CODE XXXXX.
3. PARTS MAY BE COATED WITH A LIGHT
FILM OF LUBRICATION USED IN THE
MANUFACTURING PROCESS.
4. WIRE RANGE: 12-20 AWG.
5. INSUL RANGE: ϕ .075-.175



Part Number	DIM 'X'	Mat'l	UL
4000 4G1-6	.148	Note 1	X
4000 4G2-6	.148	Note 2	X
4000 4G1-8	.174	Note 1	X
4000 4G2-8	.174	Note 2	X
4000 4G1-10	.204	Note 1	X
4000 4G2-10	.204	Note 2	X
4000 4G1-12	.265	Note 1	X
4000 4G2-12	.265	Note 2	X
4000 4G1-16	.214	Note 1	
4000 4G2-16	.214	Note 2	



SECTION A-A



DIRECTION TOWARD APPLICATOR,
EARS UP, TO THE FRONT

UNCONTROLLED COPY

<p>THIRD ANGLE PROJECTION TOLERANCES UNLESS OTHERWISE SPECIFIED INCHES: .XX - \pm.030 .XXX - \pm.015 ANGLES: \pm5°</p>	TOOL NO. 1024	Title: Spade Terminal		
		DO NOT SCALE DWG.		Drawn By: S.Johnson
ETCO Incorporated Engineered Products 25 Bellows Street Warwick, RI 02888 Phone: (401) 467-2400 Fax: (401) 467-9230 www.ETCO.com		Design Control By: ETCO	Date: 6/08/20	
		Dwg. No.:	Scale: 8X	Size B
		4000 4G1 and 4G2-6, -8, -10 cust		