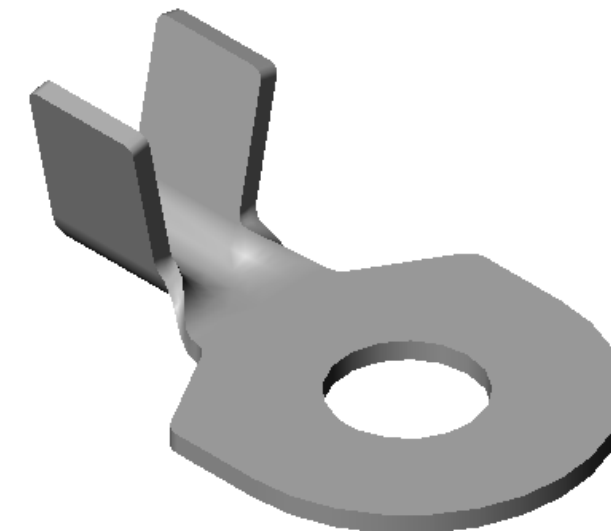
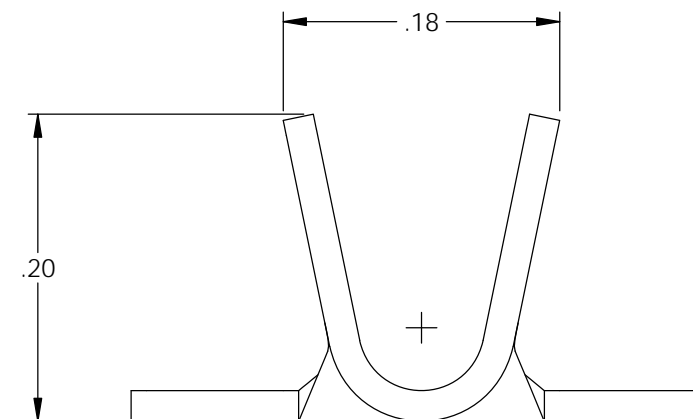
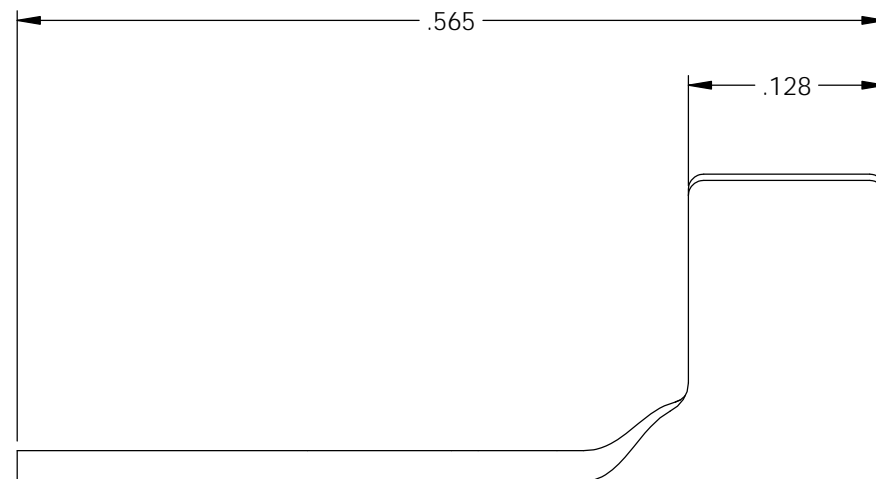
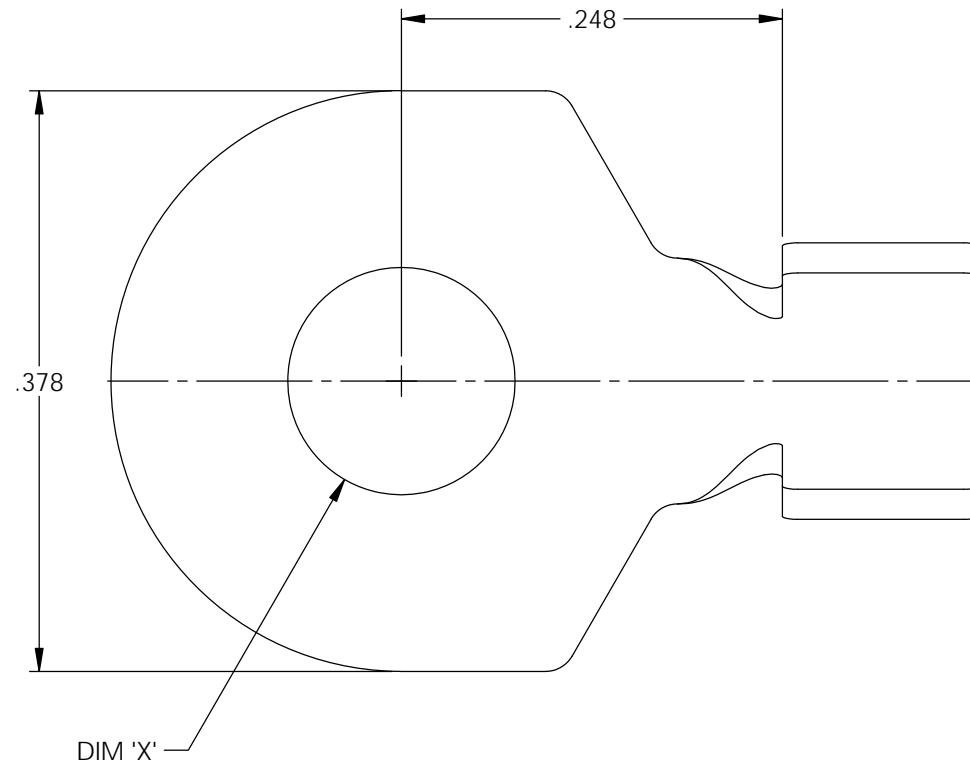


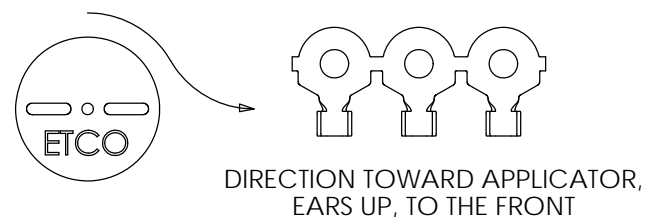
NOTES:

1. MATERIAL: .020 THICK BRASS  
#2 TEMPER (1/2 HARD)  
PER ETCO METAL CODE XXXXX.
2. MATERIAL: .020 THICK PRETINNED BRASS  
#2 TEMPER (1/2 HARD)  
PER ETCO METAL CODE XXXXX.
3. PARTS MAY BE COATED WITH A LIGHT FILM OF LUBRICATION USED IN THE MANUFACTURING PROCESS.
4. WIRE RANGE: 12-20 AWG.



Part Number	DIM 'X'	Mat'l	UL
4000 4G1-5	.148	Note 1	X
4000 4G2-5	.148	Note 2	X
4000 4G1-7	.174	Note 1	X
4000 4G2-7	.174	Note 2	X
4000 4G1-9	.204	Note 1	X
4000 4G2-9	.204	Note 2	X
4000 4G1-11	.265	Note 1	X
4000 4G2-11	.265	Note 2	X
4000 4G1-15	.214	Note 1	
4000 4G2-15	.214	Note 2	

Rev.	Description of Change/ SCN#	Date
A	Approved For Quote SCJ	6/08/20



THIS PRINT IS THE PROPERTY OF ETCO INCORPORATED. NO PART OF THIS DESIGN MAY BE USED IN ANY WAY WITHOUT WRITTEN CONSENT FROM ETCO INCORPORATED.

# UNCONTROLLED COPY

<p>THIRD ANGLE PROJECTION TOLERANCES UNLESS OTHERWISE SPECIFIED INCHES: .XX - ±.030 .XXX - ±.015 ANGLES: ±5°</p>	<p>TOOL NO. <b>1024</b></p>	<p>Title: <b>Spade Terminal</b></p>		
		<p>DO NOT SCALE DWG.</p>	<p>Drawn By: <b>S.Johnson</b></p>	<p>Date: <b>6/08/20</b></p>
<p>ETCO Incorporated Engineered Products 25 Bellows Street Warwick, RI 02888 Phone: (401) 467-2400 Fax: (401) 467-9230 www.ETCO.com</p>		<p>Design Control By: <b>ETCO</b></p>	<p>Scale: <b>8X</b></p>	<p>Size <b>B</b></p>
		<p>Dwg. No.: <b>4000 4G1 and 4G2-5, -7, -9 cust</b></p>		