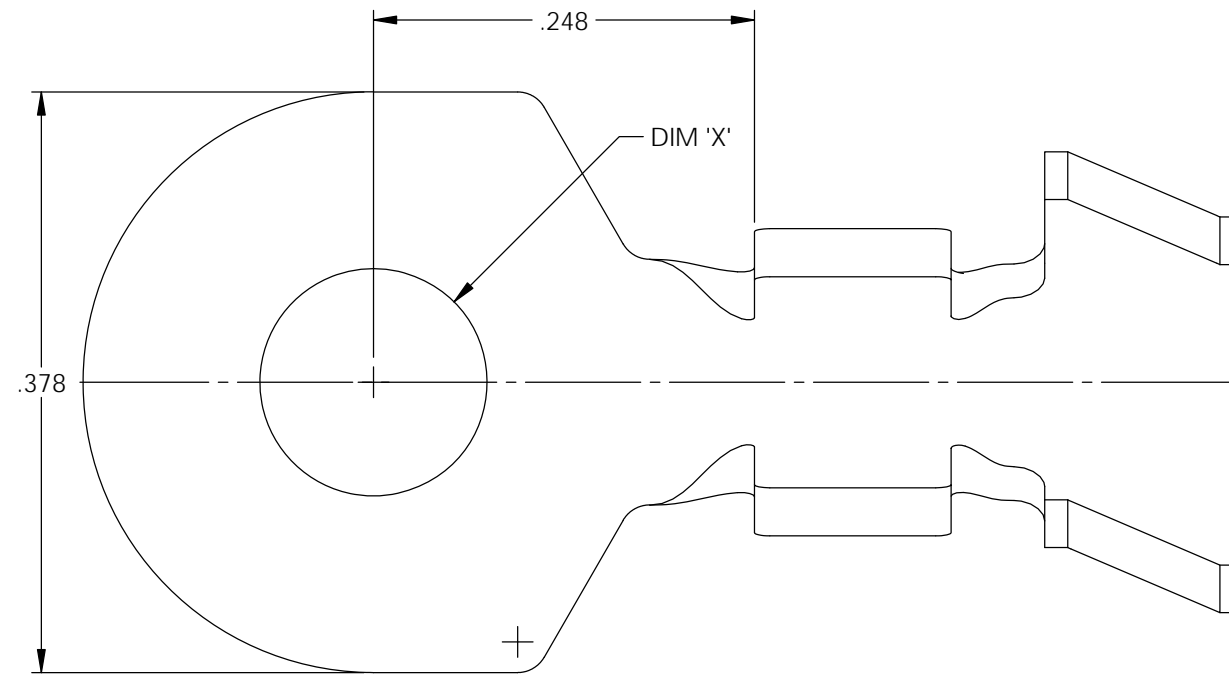



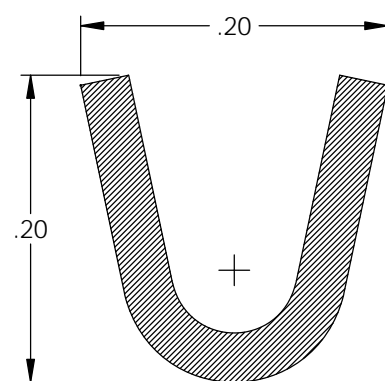
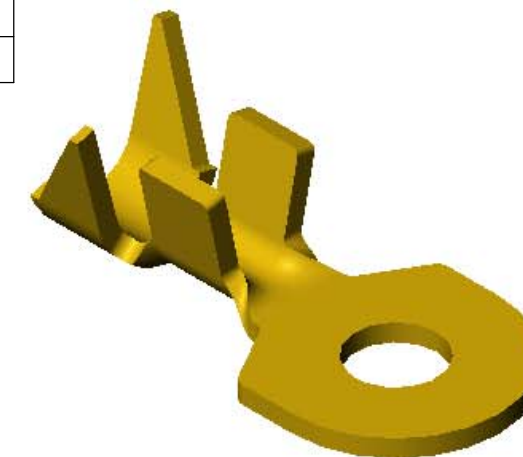
NOTES:

1. MATERIAL: .032 THICK BRASS
#2 TEMPER (1/2 HARD)
PER ETCO METAL CODE XXXXX.
2. MATERIAL: .032 THICK PRETINNED BRASS
#2 TEMPER (1/2 HARD)
PER ETCO METAL CODE XXXXX.
3. PARTS MAY BE COATED WITH A LIGHT
FILM OF LUBRICATION USED IN THE
MANUFACTURING PROCESS.
4. WIRE RANGE: 12-20 AWG.
5. INSUL RANGE: ϕ .075-.175

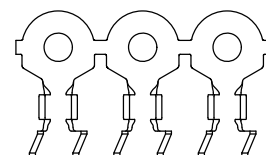
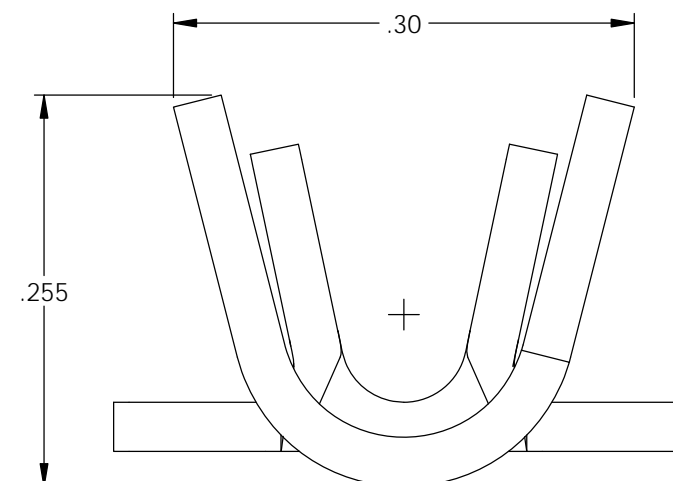
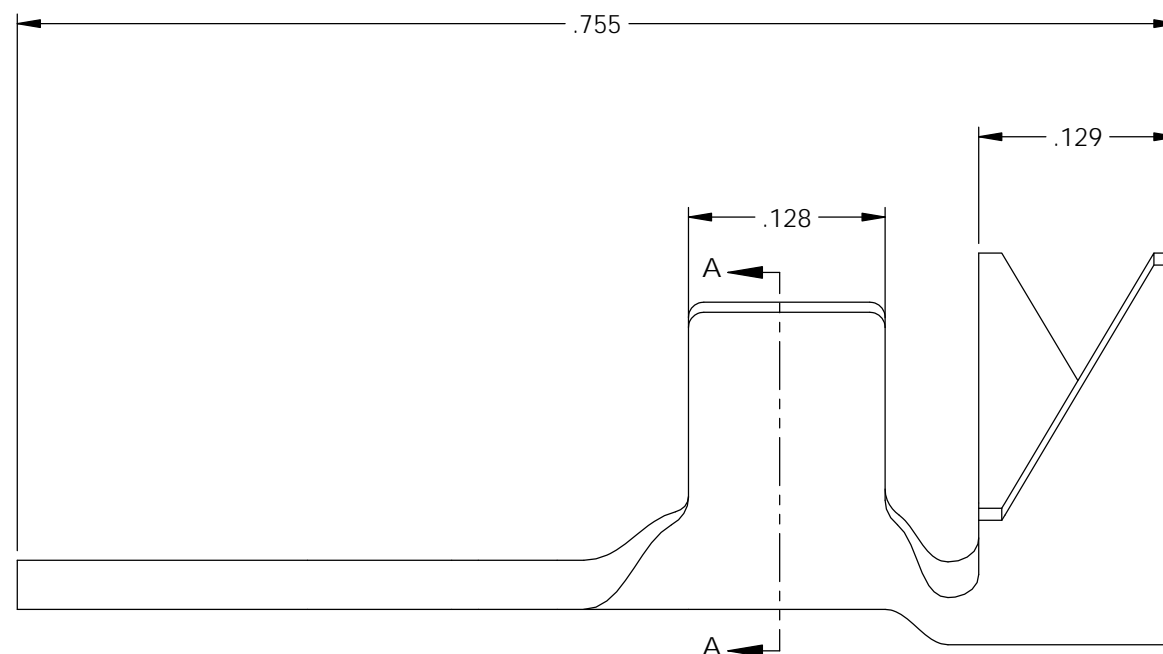


Part Number	DIM 'X'	Mat'l	
4000 4G3-6	.148	Note 1	X
4000 4G4-6	.148	Note 2	X
4000 4G3-8	.174	Note 1	X
4000 4G4-8	.174	Note 2	X
4000 4G3-10	.204	Note 1	X
4000 4G4-10	.204	Note 2	X
4000 4G3-12	.265	Note 1	X
4000 4G4-12	.265	Note 2	X
4000 4G3-16	.214	Note 1	
4000 4G4-16	.214	Note 2	

Rev.	Description of Change/ SCN#	Date
A	Approved For Quote SCJ	6/08/20

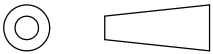



SECTION A-A



DIRECTION TOWARD APPLICATOR,
EARS UP, TO THE FRONT

UNCONTROLLED COPY

 THIRD ANGLE PROJECTION TOLERANCES UNLESS OTHERWISE SPECIFIED INCHES: .XX - \pm .030 .XXX - \pm .015 ANGLES: \pm 5°	TOOL NO. 1024	Title: Spade Terminal		
		DO NOT SCALE DWG.	Drawn By: S.Johnson	Date: 6/08/20
ETCO Incorporated Engineered Products 25 Bellows Street Warwick, RI 02888 Phone: (401) 467-2400 Fax: (401) 467-9230 www.ETCO.com		Design Control By: ETCO	Scale: 8X	Size B
		Dwg. No.: 4000 4G3 and 4G4-6, -8, -10 cust		