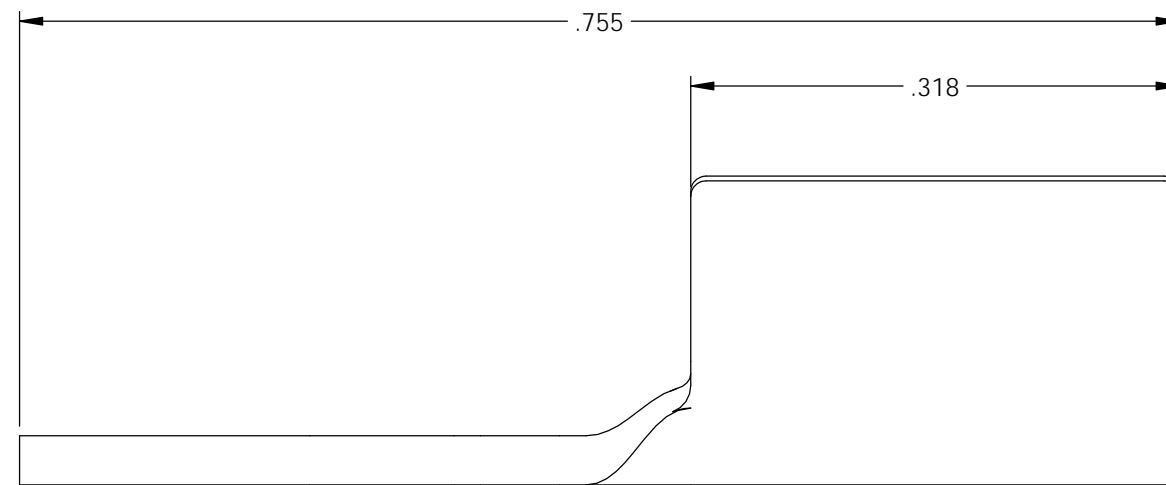
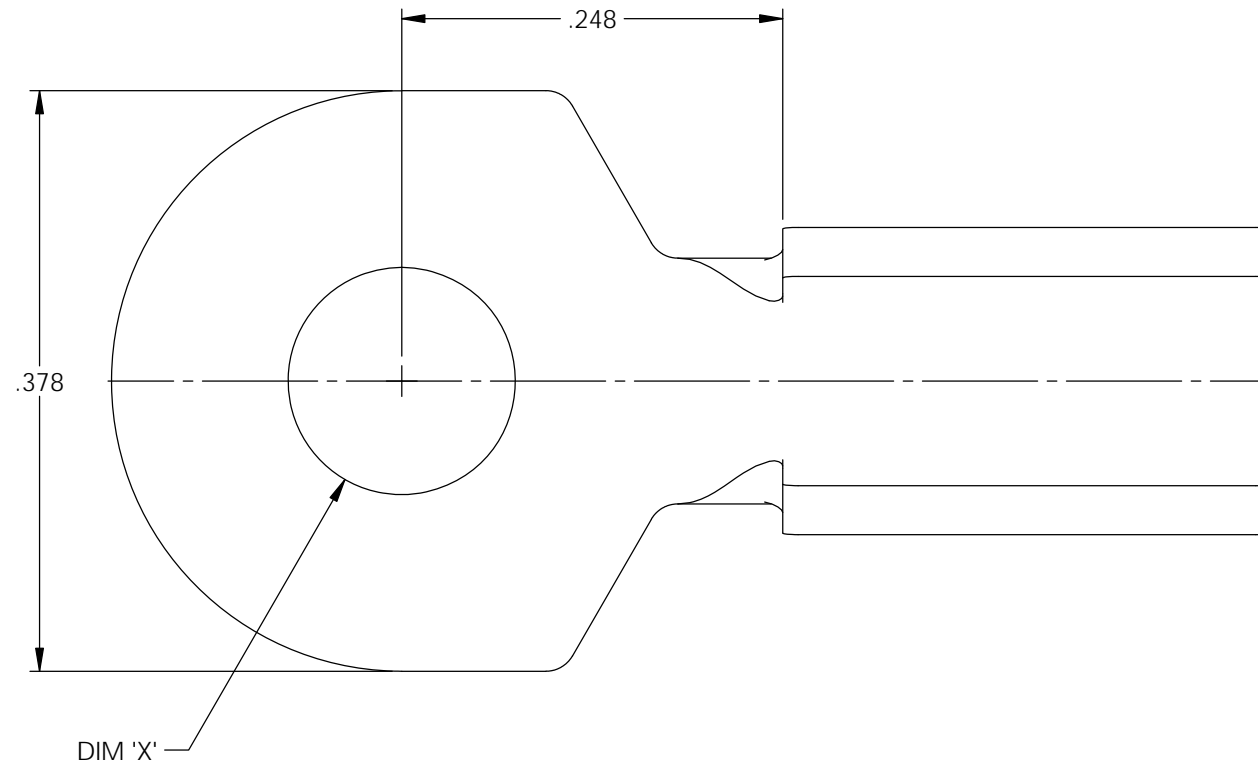


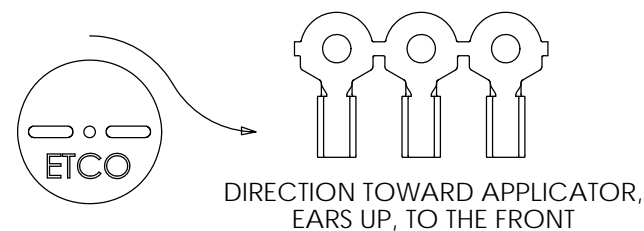
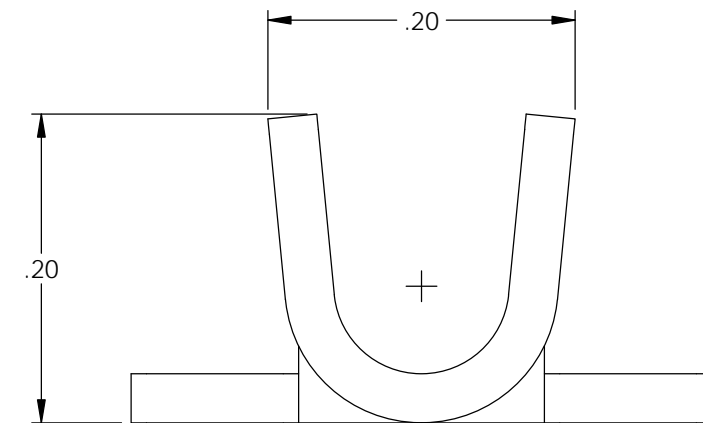
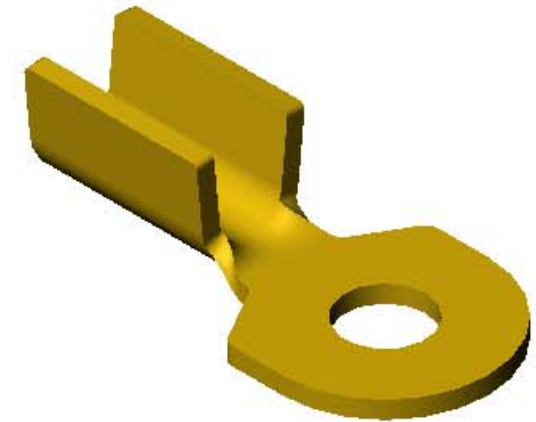
NOTES:

- MATERIAL: .032 THICK BRASS
#2 TEMPER (1/2 HARD)
PER ETCO METAL CODE XXXXX.
- MATERIAL: .032 THICK PRETINNED BRASS
#2 TEMPER (1/2 HARD)
PER ETCO METAL CODE XXXXX.
- PARTS MAY BE COATED WITH A LIGHT FILM OF LUBRICATION USED IN THE MANUFACTURING PROCESS.
- WIRE RANGE: 10-12 AWG.



Part Number	DIM 'X'	Mat'l	UL
4000 4G3-5-2	.148	Note 1	
4000 4G4-5-2	.148	Note 2	
4000 4G3-9-2	.204	Note 1	X
4000 4G4-9-2	.204	Note 2	X
4000 4G3-11-2	.265	Note 1	X
4000 4G4-11-2	.265	Note 2	X

Rev.	Description of Change/ SCN#	Date
A	Approved For Quote SCJ	6/08/20



THIS PRINT IS THE PROPERTY OF ETCO INCORPORATED. NO PART OF THIS DESIGN MAY BE USED IN ANY WAY WITHOUT WRITTEN CONSENT FROM ETCO INCORPORATED.

UNCONTROLLED COPY

<p>THIRD ANGLE PROJECTION TOLERANCES UNLESS OTHERWISE SPECIFIED INCHES: .XX - ±.030 .XXX - ±.015 ANGLES: ±5°</p>	TOOL NO. 1024	Title: Spade Terminal	
		DO NOT SCALE DWG.	Drawn By: S.Johnson Date: 6/08/20
ETCO Incorporated Engineered Products 25 Bellows Street Warwick, RI 02888 Phone: (401) 467-2400 Fax: (401) 467-9230 www.ETCO.com		Design Control By: ETCO	Scale: 8X
		Dwg. No.: 4000 4G3 and 4G4 -5-2, -9-2, -11-2 cust	