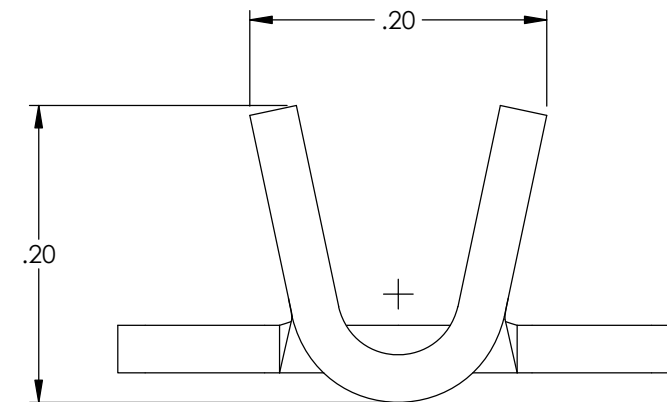
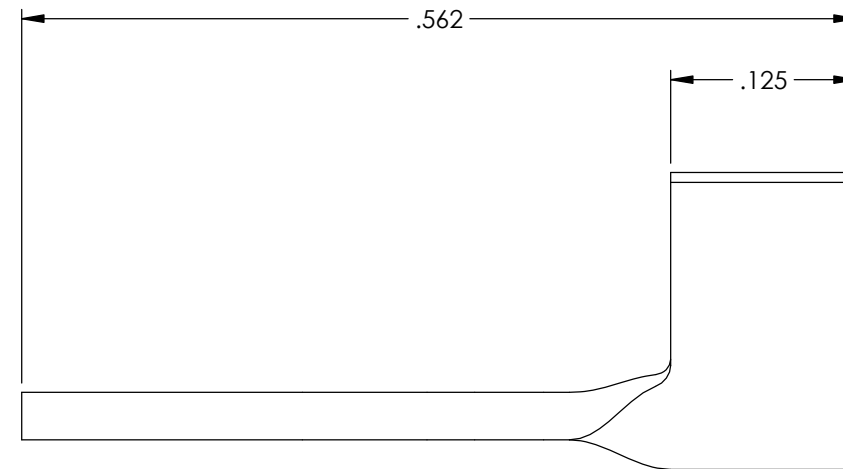
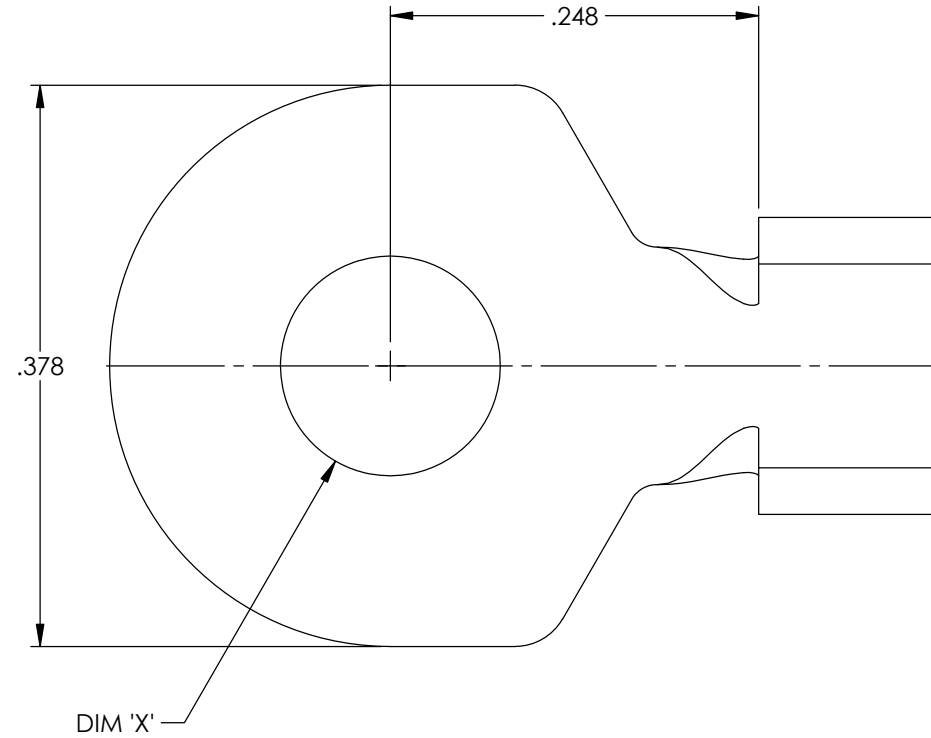
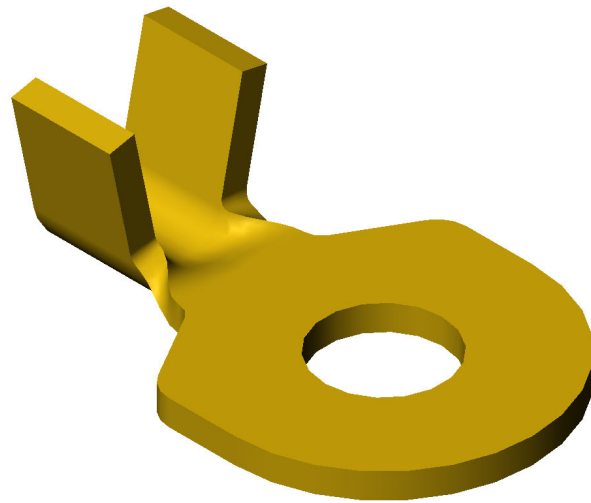
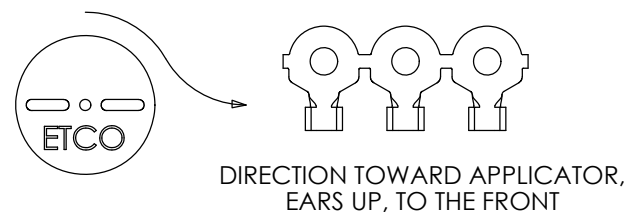


- NOTES:
- MATERIAL: .032 THICK BRASS
#2 TEMPER (1/2 HARD)
PER ETCO METAL CODE 2-0770.
 - MATERIAL: .032 THICK PRETINNED BRASS
#2 TEMPER (1/2 HARD)
PER ETCO METAL CODE 2-1830.
 - PARTS MAY BE COATED WITH A LIGHT FILM OF LUBRICATION USED IN THE MANUFACTURING PROCESS.
 - WIRE RANGE: 12-20 AWG.





Part Number	DIM 'X'	Mat'l	UL
4000 4G3-5	.148	Note 1	X
4000 4G4-5	.148	Note 2	X
4000 4G3-7	.174	Note 1	X
4000 4G4-7	.174	Note 2	X
4000 4G3-9	.204	Note 1	X
4000 4G4-9	.204	Note 2	X
4000 4G3-11	.265	Note 1	X
4000 4G4-11	.265	Note 2	X
4000 4G3-15	.214	Note 1	
4000 4G4-15	.214	Note 2	

Rev.	Description of Change/ SCN#	Date
-	Approved For Mfg SCJ	9/26/22



THIS PRINT IS THE PROPERTY OF ETCO INCORPORATED. NO PART OF THIS DESIGN MAY BE USED IN ANY WAY WITHOUT WRITTEN CONSENT FROM ETCO INCORPORATED.

UNCONTROLLED COPY

 THIRD ANGLE PROJECTION TOLERANCES UNLESS OTHERWISE SPECIFIED INCHES: .XX - ±.030 .XXX - ±.015 ANGLES: ±5°	TOOL NO.	Title: Ring Terminal		
	1064	DO NOT SCALE DWG.	Drawn By: S.Johnson	Date: 6/08/20
 ETCO	ETCO Incorporated Engineered Products 25 Bellows Street Warwick, RI 02888 Phone: (401) 467-2400 Fax: (401) 467-9230 www.ETCO.com		Design Control By: ETCO	Scale: 8X
			Dwg. No.: 4000 4G3 and 4G4-5, -7, -9 cust	