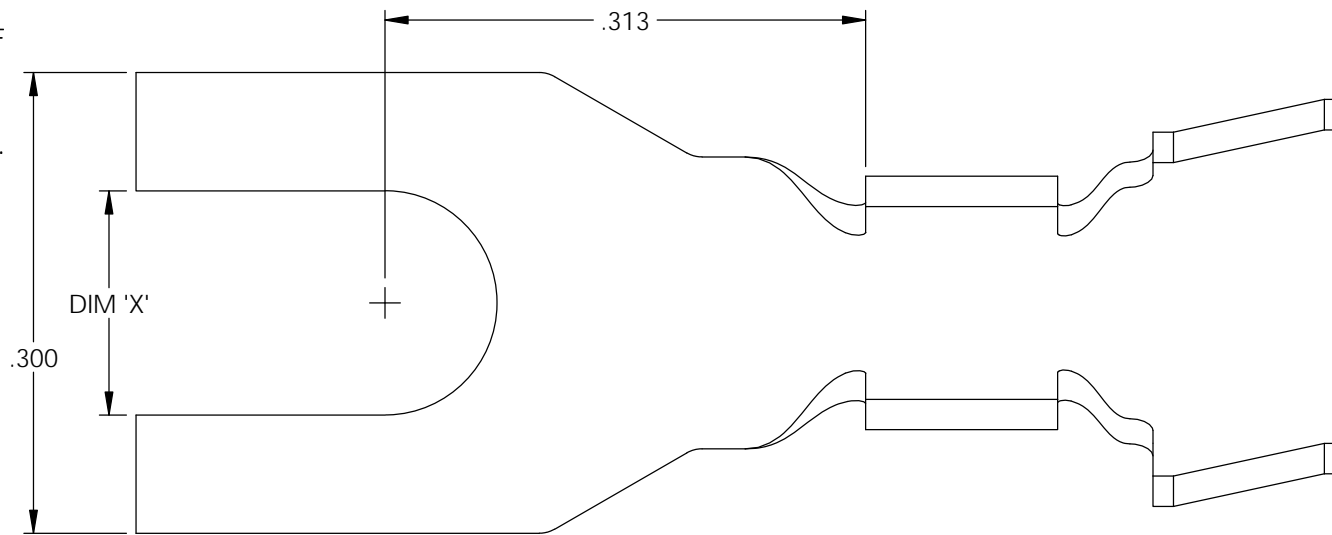
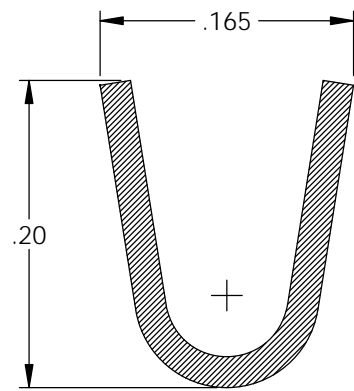
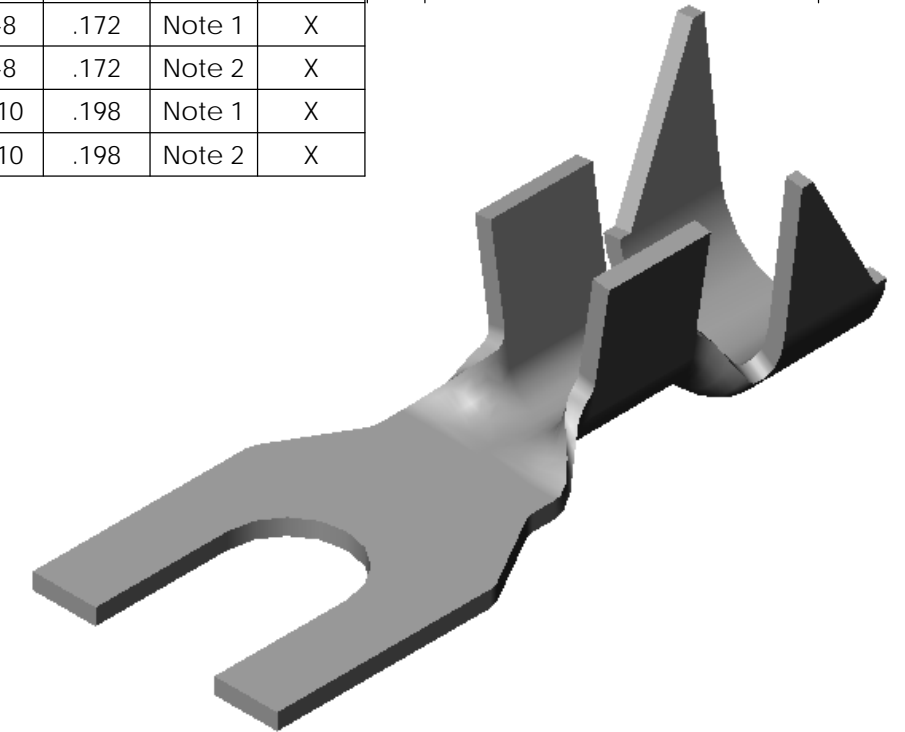


NOTES:

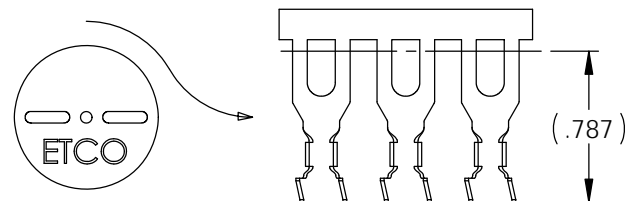
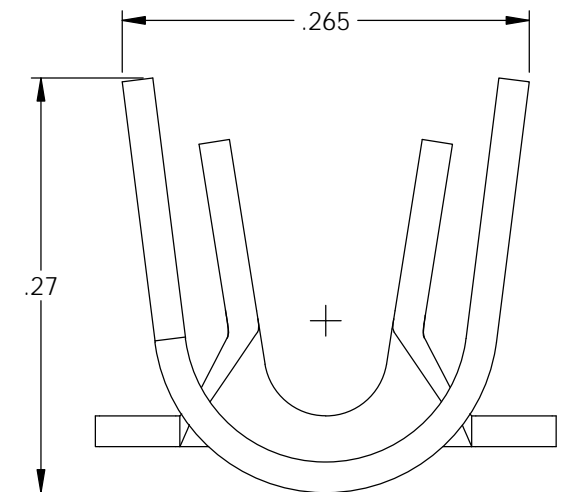
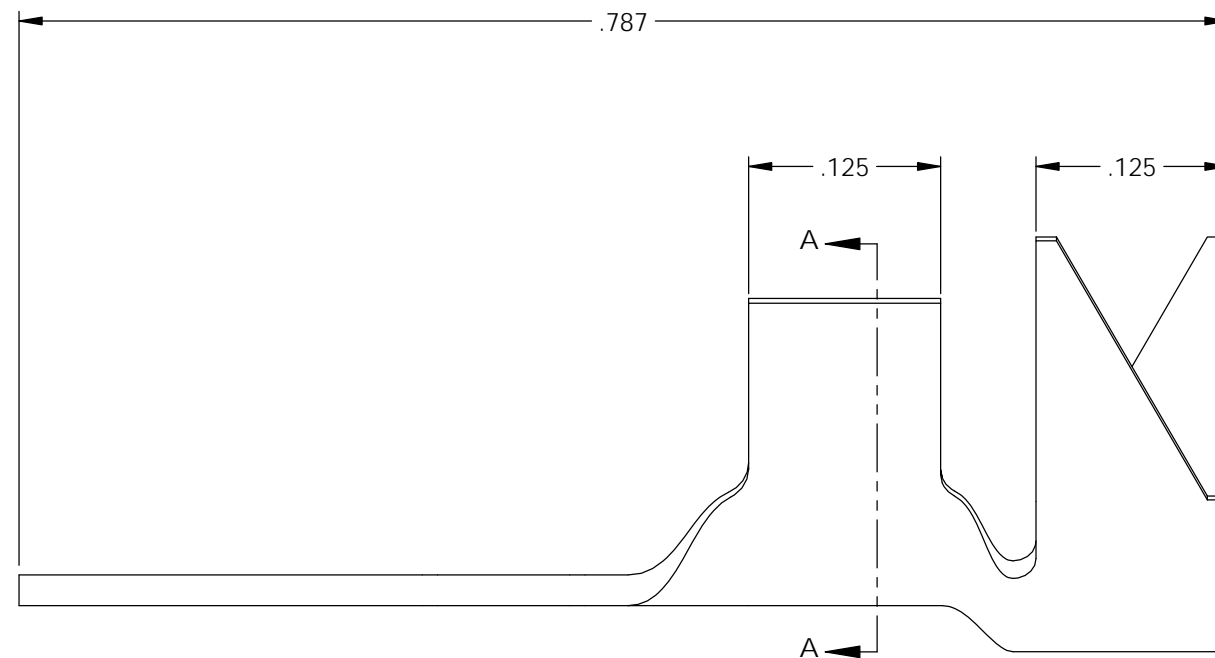
1. MATERIAL: .020 THICK BRASS
#2 TEMPER (1/2 HARD)
PER ETCO METAL CODE XXXXX.
2. MATERIAL: .020 THICK PRETINNED BRASS
#2 TEMPER (1/2 HARD)
PER ETCO METAL CODE XXXXX.
3. PARTS MAY BE COATED WITH A LIGHT FILM OF LUBRICATION USED IN THE MANUFACTURING PROCESS.
4. WIRE RANGE: 20-14 AWG.
5. INSULATION DIAMETER RANGE: ϕ .075- ϕ .125.



Part Number	DIM 'X'	Mat'l	UL	Rev.	Description of Change/ SCN#	Date
4000 A3A1-6	.146	Note 1	X	A	Approved For Quote SCJ	4/24/20
4000 A3A2-6	.146	Note 2	X			
4000 A3A1-8	.172	Note 1	X			
4000 A3A2-8	.172	Note 2	X			
4000 A3A1-10	.198	Note 1	X			
4000 A3A2-10	.198	Note 2	X			



SECTION A-A



DIRECTION TOWARD APPLICATOR,
EARS UP, TO THE FRONT

UNCONTROLLED COPY

<p>THIRD ANGLE PROJECTION TOLERANCES UNLESS OTHERWISE SPECIFIED INCHES: .XX - \pm.030 .XXX - \pm.015 ANGLES: \pm5°</p>	<p>TOOL NO. 1039</p>	<p>Title: Spade Terminal</p>		
		<p>DO NOT SCALE DWG.</p>	<p>Drawn By: S.Johnson</p>	<p>Date: 4/24/20</p>
<p>ETCO Incorporated Engineered Products 25 Bellows Street Warwick, RI 02888 Phone: (401) 467-2400 Fax: (401) 467-9230 www.ETCO.com</p>		<p>Design Control By: ETCO</p>	<p>Scale: 8X</p>	<p>Size B</p>
		<p>Dwg. No.: 4000 A3A1,2 -6,-8,-10 cust</p>		