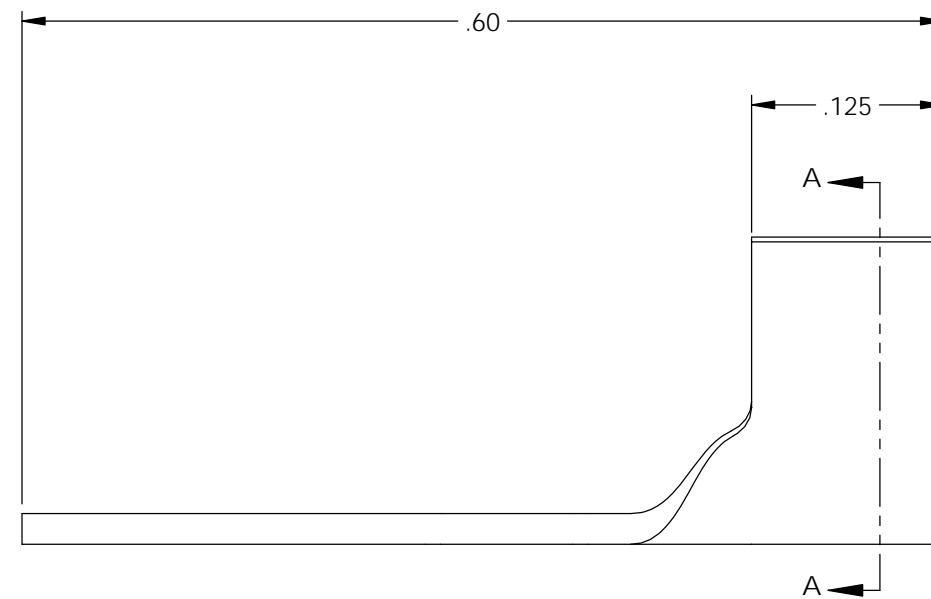
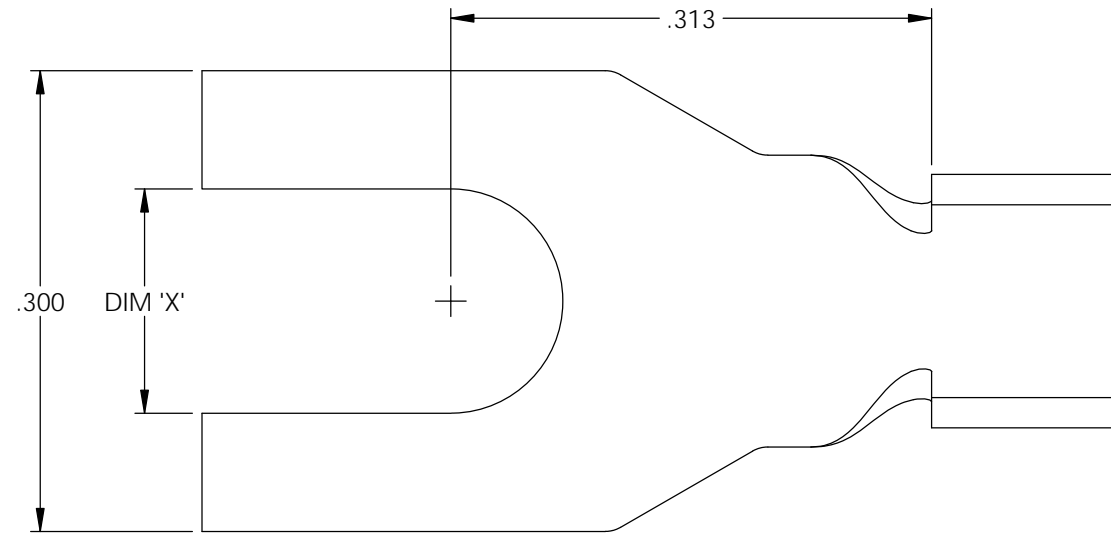


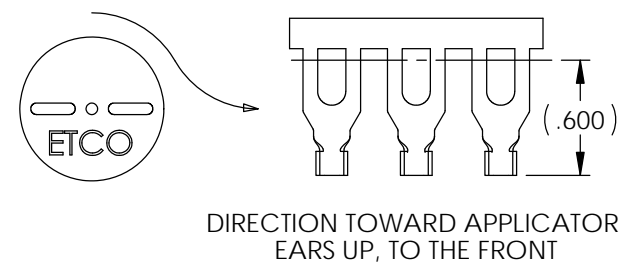
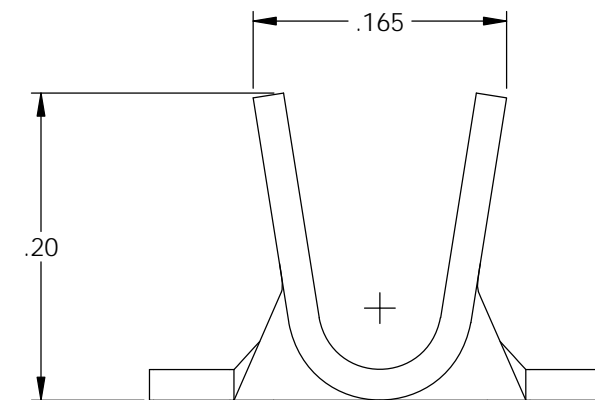
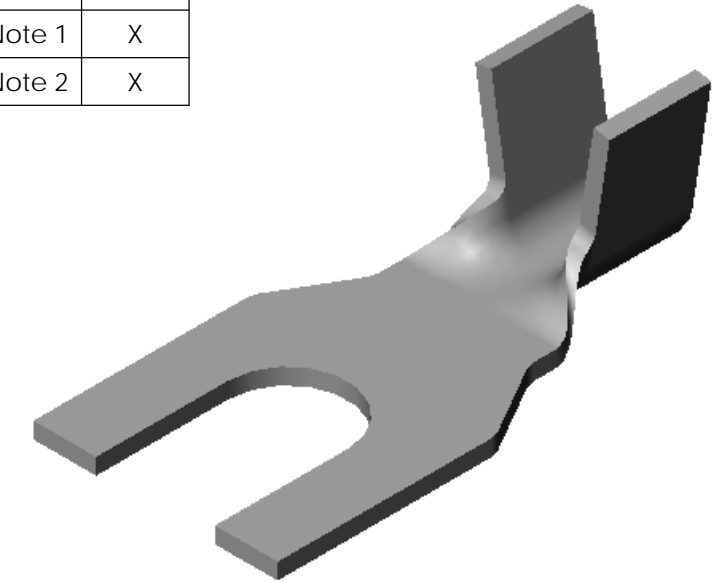
NOTES:

- MATERIAL: .020 THICK BRASS
#2 TEMPER (1/2 HARD)
PER ETCO METAL CODE XXXXX.
- MATERIAL: .020 THICK PRETINNED BRASS
#2 TEMPER (1/2 HARD)
PER ETCO METAL CODE XXXXX.
- PARTS MAY BE COATED WITH A LIGHT FILM OF LUBRICATION USED IN THE MANUFACTURING PROCESS.
- WIRE RANGE: 18-14 AWG.



| Part Number | DIM 'X' | Mat'l | UL |
|-------------|---------|--------|----|
| 4000 A3A1-5 | .146 | Note 1 | X |
| 4000 A3A2-5 | .146 | Note 2 | X |
| 4000 A3A1-7 | .172 | Note 1 | X |
| 4000 A3A2-7 | .172 | Note 2 | X |
| 4000 A3A1-9 | .198 | Note 1 | X |
| 4000 A3A2-9 | .198 | Note 2 | X |

| Rev. | Description of Change/ SCN# | Date |
|------|-----------------------------|---------|
| A | Approved For Quote SCJ | 4/24/20 |



THIS PRINT IS THE PROPERTY OF ETCO INCORPORATED. NO PART OF THIS DESIGN MAY BE USED IN ANY WAY WITHOUT WRITTEN CONSENT FROM ETCO INCORPORATED.

UNCONTROLLED COPY

| | | | | |
|---|---------------------------------|---|-----------------------------------|-----------------------------|
| <p>THIRD ANGLE PROJECTION TOLERANCES UNLESS OTHERWISE SPECIFIED INCHES: .XX - ±.030 .XXX - ±.015 ANGLES: ±5°</p> | <p>TOOL NO. 1039</p> | <p>Title: Spade Terminal</p> | | |
| | | <p>DO NOT SCALE DWG.</p> | <p>Drawn By: S.Johnson</p> | <p>Date: 4/24/20</p> |
| <p>ETCO Incorporated Engineered Products 25 Bellows Street Warwick, RI 02888 Phone: (401) 467-2400 Fax: (401) 467-9230 www.ETCO.com</p> | | <p>Design Control By: ETCO</p> | <p>Scale: 8X</p> | <p>Size B</p> |
| | | <p>Dwg. No.: 4000 A3A1,2 -5,-7,-9 cust</p> | | |