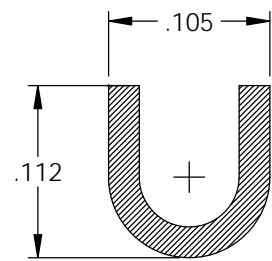
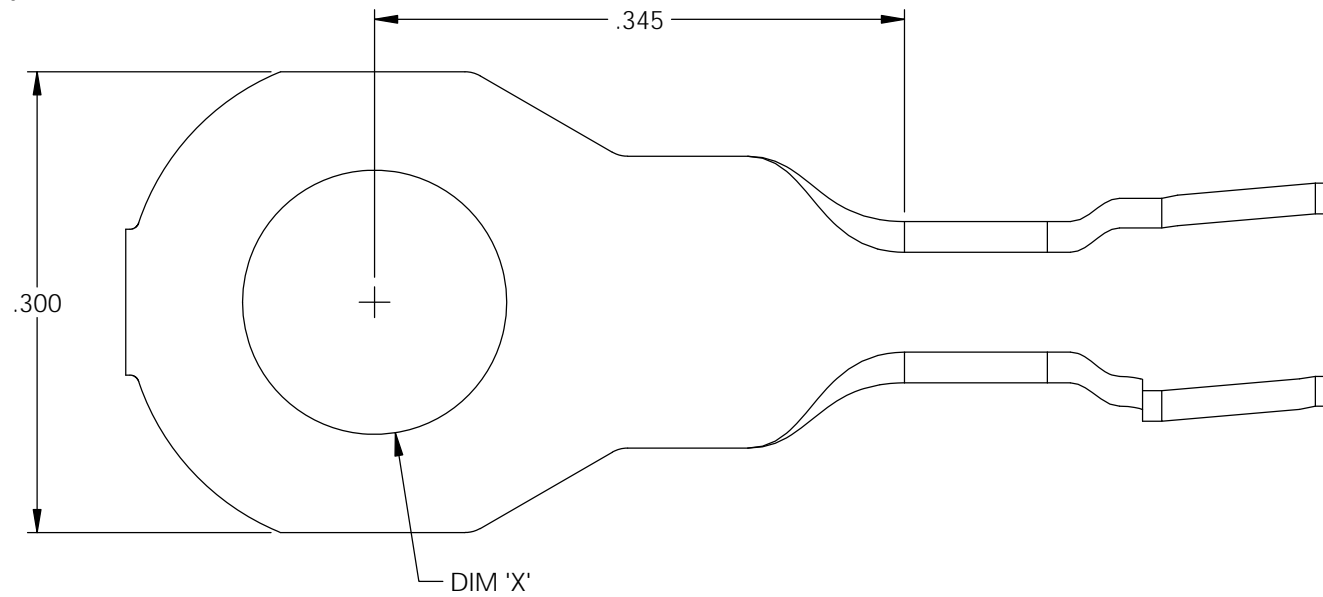
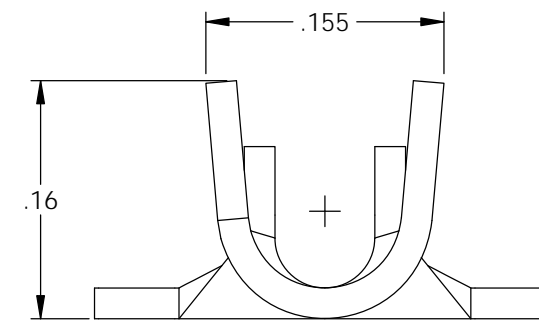
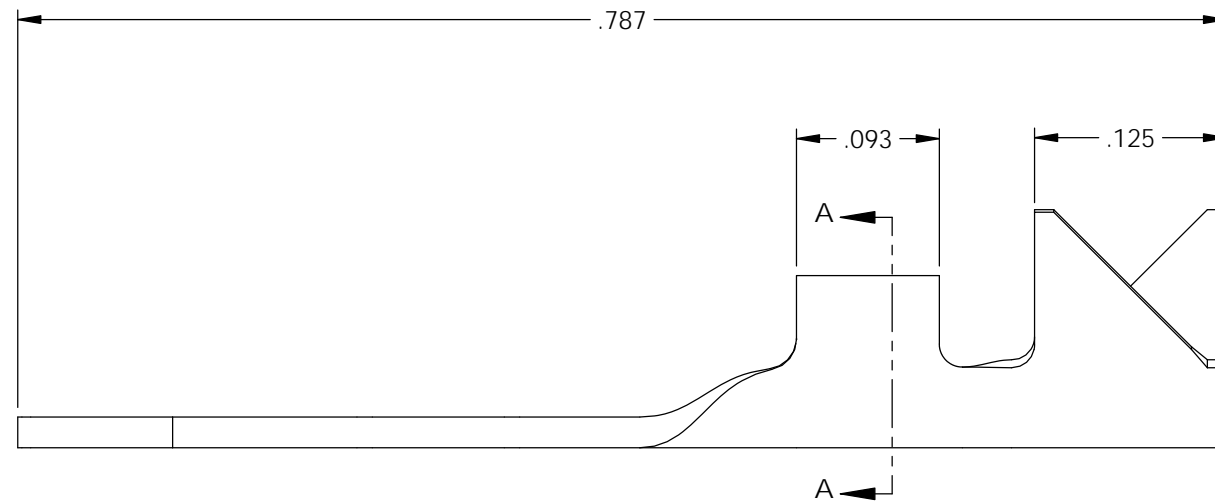



NOTES:

1. MATERIAL: .020 THICK BRASS
#2 TEMPER (1/2 HARD)
PER ETCO METAL CODE XXXXX.
2. MATERIAL: .020 THICK PRETINNED BRASS
#2 TEMPER (1/2 HARD)
PER ETCO METAL CODE XXXXX.
3. PARTS MAY BE COATED WITH A LIGHT FILM OF LUBRICATION USED IN THE MANUFACTURING PROCESS.
4. WIRE RANGE: 22-18 AWG.
5. INSULATION DIAMETER RANGE: ϕ .075- ϕ .125.

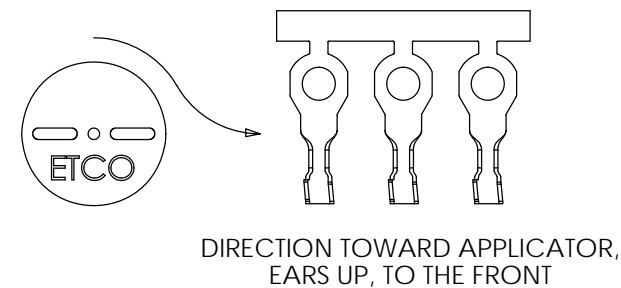
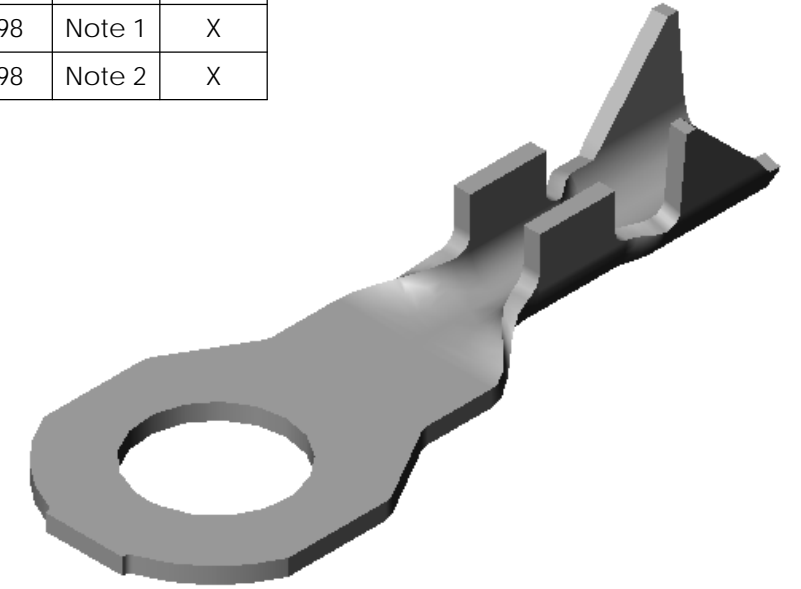


SECTION A-A



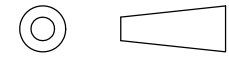

Part Number	DIM 'X'	Mat'l	
4000 A3G1-6-3	.146	Note 1	X
4000 A3G2-6-3	.146	Note 2	X
4000 A3G1-8-3	.172	Note 1	X
4000 A3G2-8-3	.172	Note 2	X
4000 A3G1-10-3	.198	Note 1	X
4000 A3G2-10-3	.198	Note 2	X

Rev.	Description of Change/ SCN#	Date
A	Approved For Quote SCJ	4/24/20



THIS PRINT IS THE PROPERTY OF ETCO INCORPORATED. NO PART OF THIS DESIGN MAY BE USED IN ANY WAY WITHOUT WRITTEN CONSENT FROM ETCO INCORPORATED.

UNCONTROLLED COPY

 THIRD ANGLE PROJECTION TOLERANCES UNLESS OTHERWISE SPECIFIED INCHES: .XX - \pm .030 .XXX - \pm .015 ANGLES: \pm 5°	TOOL NO. 1039	Title: Spade Terminal		
		DO NOT SCALE DWG.	Drawn By: S.Johnson	Date: 4/24/20
ETCO Incorporated Engineered Products 25 Bellows Street Warwick, RI 02888 Phone: (401) 467-2400 Fax: (401) 467-9230 www.ETCO.com		Design Control By: ETCO	Scale: 8X	Size B
		Dwg. No.: 4000 A3G1,2 -6,-8,-10-3 cust		