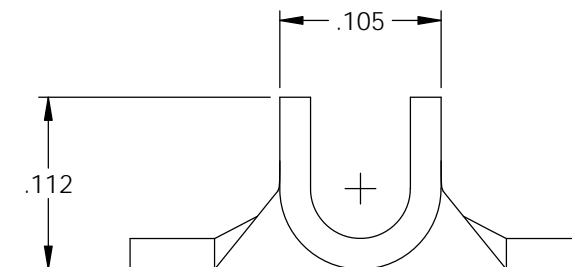
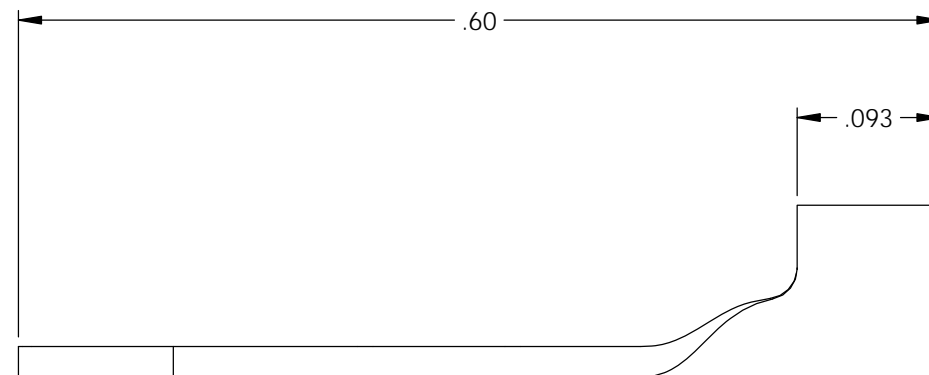
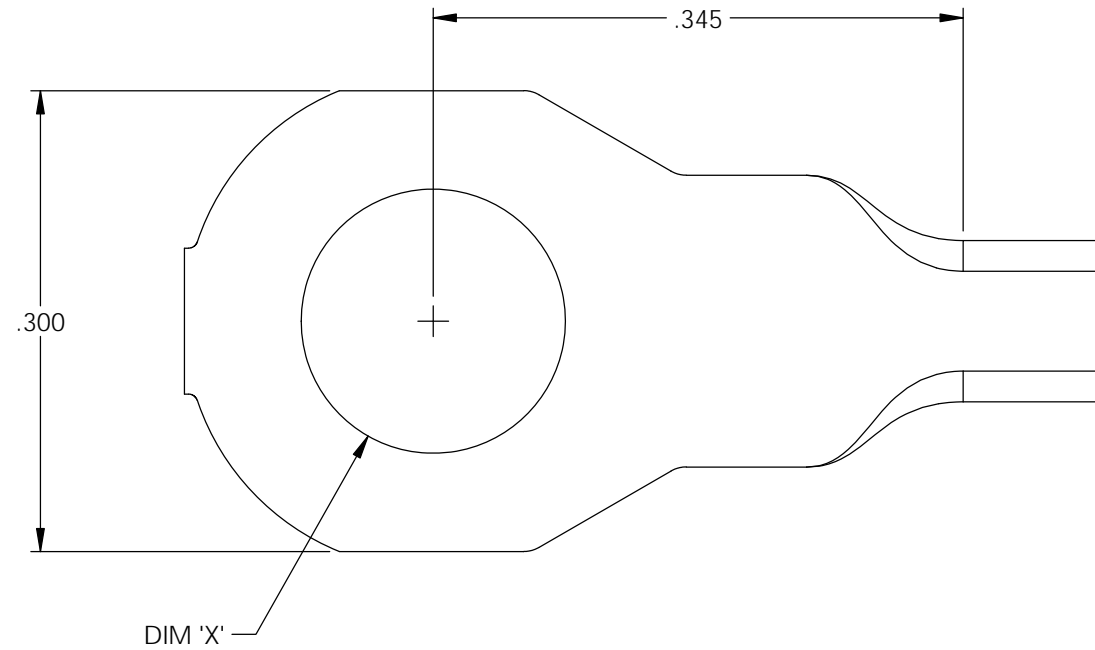



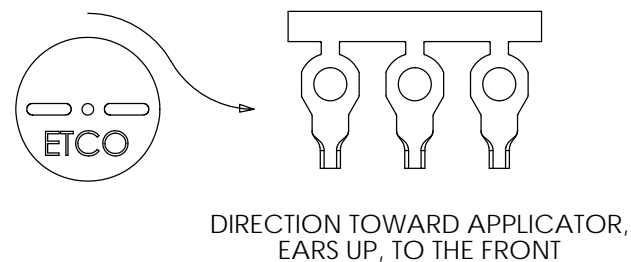
NOTES:

- MATERIAL: .020 THICK BRASS
#2 TEMPER (1/2 HARD)
PER ETCO METAL CODE XXXXX.
- MATERIAL: .020 THICK PRETINNED BRASS
#2 TEMPER (1/2 HARD)
PER ETCO METAL CODE XXXXX.
- PARTS MAY BE COATED WITH A LIGHT FILM OF LUBRICATION USED IN THE MANUFACTURING PROCESS.
- WIRE RANGE: 22-18 AWG.





Part Number	DIM 'X'	Mat'l	
4000 A3G1-5-3	.146	Note 1	X
4000 A3G2-5-3	.146	Note 2	X
4000 A3G1-7-3	.172	Note 1	X
4000 A3G2-7-3	.172	Note 2	X
4000 A3G1-9-3	.198	Note 1	X
4000 A3G2-9-3	.198	Note 2	X

Rev.	Description of Change/ SCN#	Date
A	Approved For Quote SCJ	4/24/20



UNCONTROLLED COPY

 THIRD ANGLE PROJECTION TOLERANCES UNLESS OTHERWISE SPECIFIED INCHES: .XX - ±.030 .XXX - ±.015 ANGLES: ±5°	TOOL NO. 1039	Title: Spade Terminal		
		DO NOT SCALE DWG.	Drawn By: S.Johnson	Date: 4/24/20
ETCO Incorporated Engineered Products 25 Bellows Street Warwick, RI 02888 Phone: (401) 467-2400 Fax: (401) 467-9230 www.ETCO.com		Design Control By: ETCO	Scale: 8X	Size B
		Dwg. No.: 4000 A3G1,2 -5,-7,-9-3 cust		